

SCHEDULE OF QUANTITIES

RELOCATE TEMPORARY CONCRETE BARRIER			
STATION	TO	STATION	FEET
75+76.25		78+88.75	312.5'
			TOTAL - 312.5'
TEMPORARY CONCRETE BARRIER			
STATION	TO	STATION	FEET
75+51.25		75+76.25	25.0'
78+88.75		79+13.75	25.0'
			TOTAL - 50.0'

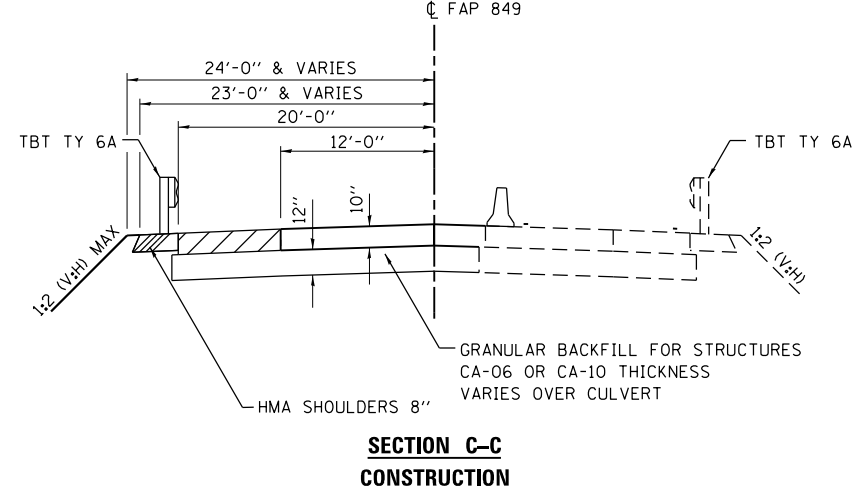
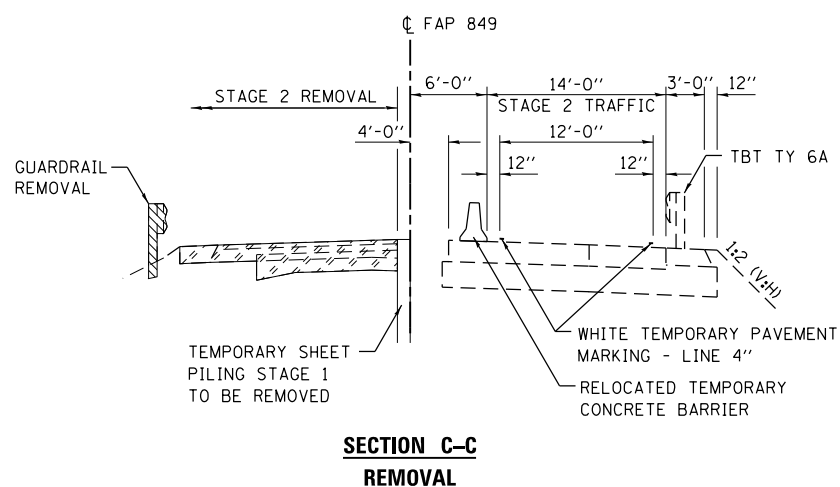
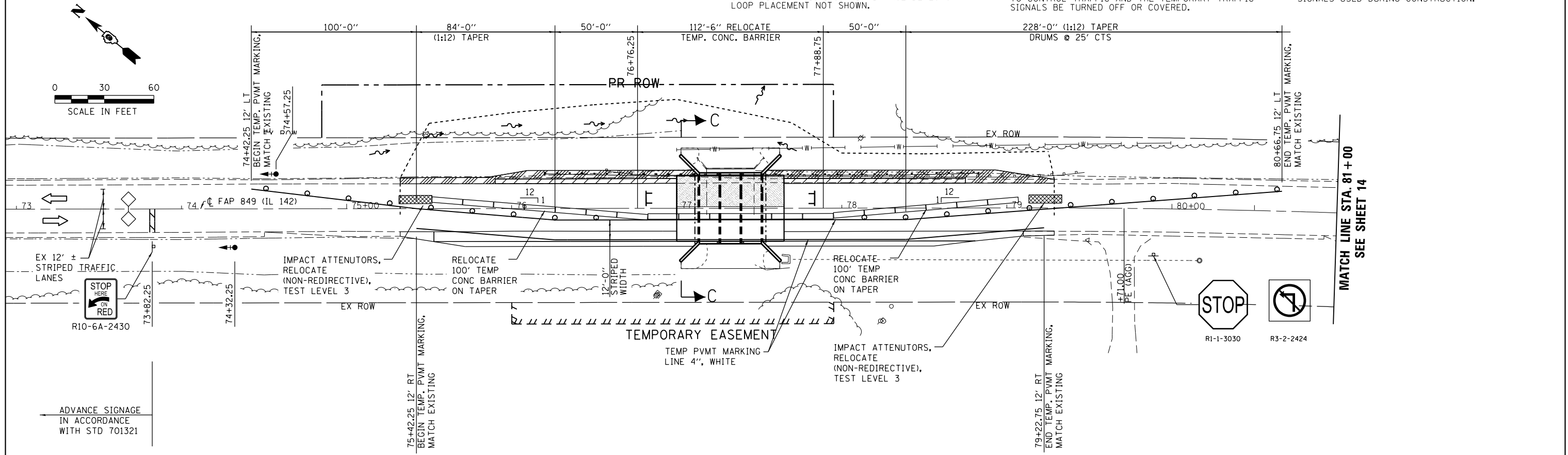
IMPACT ATTENUATORS, RELOCATE (NON-REDIRECTIVE), TEST LEVEL 3 - 2 EACH

LEGEND

- DETECTOR LOOP
- TRAFFIC SIGNAL WITH BACKPLATE, SIGNAL DIRECTION INDICATED
- DRUM WITH STEADY BURNING BI-DIRECTIONAL LIGHT
- PAVEMENT REMOVAL
- BASE COURSE WIDENING, 10"
- HMA SHOULDER, 6"
- HMA SHOULDER, 8"
- TYPE III BARRICADE

GENERAL NOTES

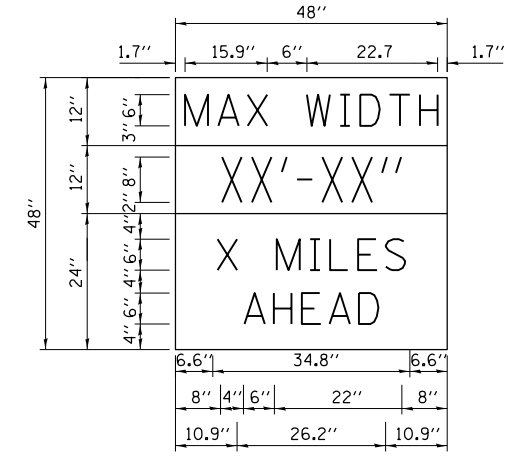
- TRAFFIC CONTROL SHALL BE ERECTED AS SHOWN AND ACCORDING TO "TRAFFIC CONTROL AND PROTECTION, STANDARD 701321."
- SEE SPECIAL PROVISIONS FOR ADDITIONAL TRAFFIC CONTROL REQUIREMENTS.
- COORDINATE LOCATION OF SIGNALS WITH FINAL WORK AS DIRECTED BY THE ENGINEER.
- ADDITIONAL SIGNAGE FOR ENTRANCES AND ADVANCE WIDTH RESTRICTION WARNING SHALL BE INCLUDED IN THE COST OF STANDARD 701321.
- THE DIMENSION SHOWN ON THE WIDTH RESTRICTION SIGN (W12-1102(0)-48) SHOWN ON STANDARD 701321 AND ON THE ADVANCE WARNING SIGN (W12-1103) SHOWN ON THIS SHEET SHALL BE 12'-6" FOR STAGE 2 CONSTRUCTION.
- SEE STD 701321 FOR COMPLETION OF STAGE CONSTRUCTION SIGNING AND ADVANCE DETECTOR LOOP PLACEMENT NOT SHOWN.
- THE ADVANCE DETECTOR LOOPS ARE TYPICALLY LOCATED 275 FEET IN ADVANCE OF THE STOP BAR. THE BUREAU OF OPERATIONS SHOULD APPROVE THE LOOP LOCATIONS PRIOR TO INSTALLATION.
- THE CENTERLINE PAVEMENT MARKING SHOULD BE REMOVED FROM THE STOP BAR TO THE SAND ATTENUATORS OR DRUMS. EDGE LINE PAVEMENT MARKING SHOULD BE REMOVED IF A 10 FOOT LANE WIDTH CANNOT BE MAINTAINED. TEMPORARY EDGE LINES SHOULD BE INSTALLED WHEN THE EDGE LINES ARE REMOVED.
- VERTICAL PANELS SHOWN ON STANDARD 701321 WILL NOT BE REQUIRED ON THE STAGE 2 NEW BRIDGE RAIL. THE BARRIER WALL REFLECTORS SHALL BE INSTALLED PRIOR TO OPENING TO TRAFFIC.
- ANY TIME THE CONCRETE BARRIER IS NOT IN THE PROPER POSITION, FLAGGERS SHALL BE IN PLACE TO CONTROL TRAFFIC AND THE TEMPORARY TRAFFIC SIGNALS BE TURNED OFF OR COVERED.
- ALL TRAFFIC SIGNALS SHOWN ARE INCLUDED IN TEMPORARY BRIDGE TRAFFIC SIGNALS - 1 EACH.
- TEMPORARY BRIDGE TRAFFIC SIGNALS SHALL BE A 3-PHASE SIGNAL WITH ACTUATION PROVIDED FOR THE PRIVATE ENTRANCE AT STATION 82+63.91.
- THE EXISTING TRAFFIC SIGNALS AT THE SIGNALIZED ENTRANCE AT STATION 82+63.91 SHALL BE UTILIZED AS PART OF THE TEMPORARY BRIDGE TRAFFIC SIGNAL SYSTEM DURING CONSTRUCTION STAGING.
- THE GREEN PHASE FOR SOUTHBOUND IL 142 TRAFFIC SHALL BE OF SUFFICIENT LENGTH TO ALLOW CLEARANCE OF THE WORK ZONE AND THE SIGNALIZED INTERSECTION AT STATION 82+63.91 DURING STAGING.
- SEE "STAGE CONSTRUCTION PLAN AND DETAILS FOR COMMERCIAL ENTRANCE" (SHEET 14) FOR ADDITIONAL INFORMATION REGARDING THE TEMPORARY TRAFFIC SIGNALS USED DURING CONSTRUCTION.



NOTE: THIS SIGN SHALL BE LOCATED AS DIRECTED BY THE ENGINEER. ONE SIGN SHALL BE PROVIDED FOR EACH APPROACH TO THE SITE.

W12-1103

W12-1103 (WIDTH IS 8D); NO BORDER, BLOCK ON WHITE; "MAX WIDTH" D; NO BORDER, BLACK ON ORANGE; "XX'-XX'" D; NO BORDER, BLACK ON WHITE; "X MILES" D; "AHEAD" D



FILE NAME = D978210-sh2-staging.dgn
MODEL = Default
PLOT DRIVER = IODOT_PDF.plt



USER NAME = twalker	DESIGNED - CMM	REVISED -
FILE NAME = D978210-sh2-staging.dgn	DRAWN - CMM	REVISED -
PLOT SCALE = 60.0000 / in.	CHECKED - MCV	REVISED -
PLOT DATE = 5/29/2014	DATE - 4/25/2014	REVISED -

STATE OF ILLINOIS
DEPARTMENT OF TRANSPORTATION

STAGE 2 CONSTRUCTION PLAN AND DETAILS

SCALE: 1"=30' SHEET NO. 1 OF 1 SHEETS STA. 73+00 TO STA. 81+00

F.A.P. RTE.	SECTION	COUNTY	TOTAL SHEETS	SHEET NO.
849	113B-1	JEFFERSON	36	13
CONTRACT NO. 78210				
ILLINOIS FED. AID PROJECT				