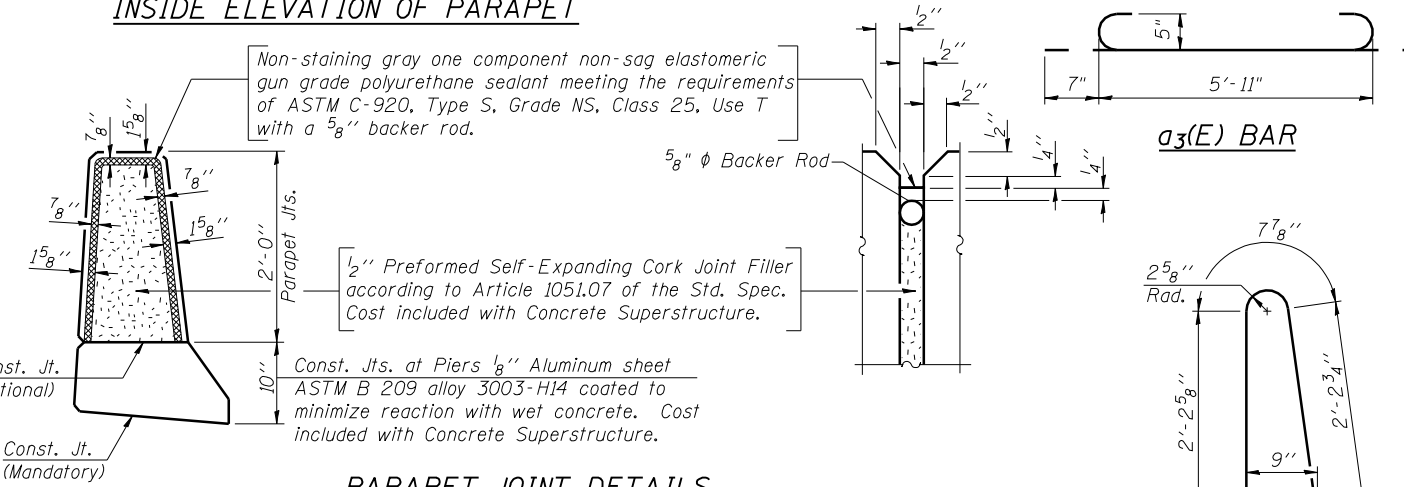


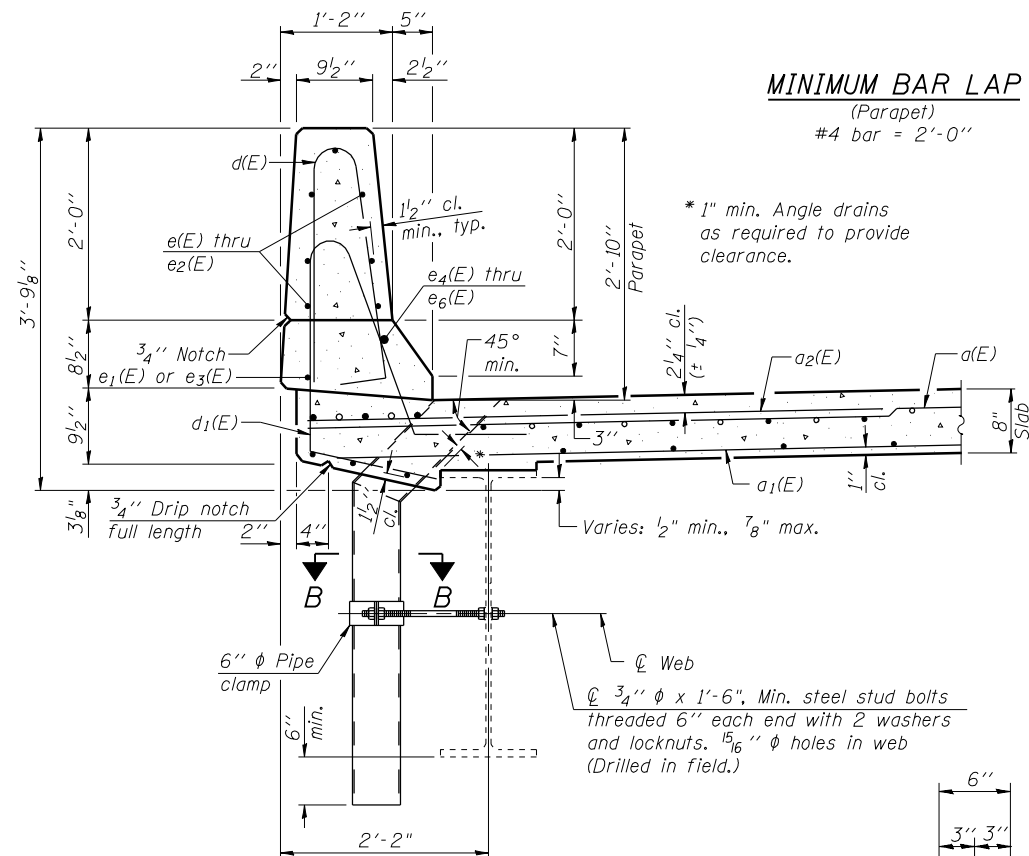
**INSIDE ELEVATION OF PARAPET**



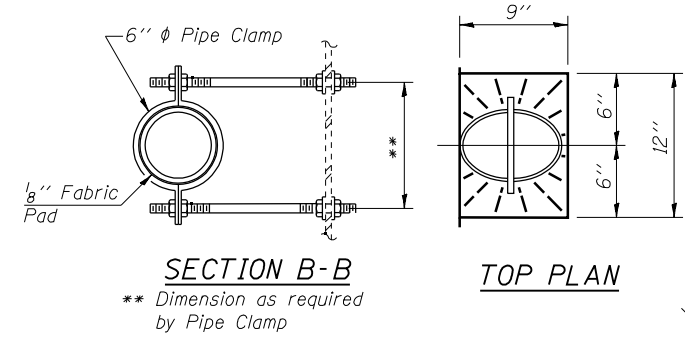
**PARAPET JOINT DETAILS**

**Notes:**  
 Drains shall be located clear of all diaphragms.  
 The exterior surfaces of the floor drains shall be painted with the finish coat as specified in Section 506 of the Standard Specifications. The exterior surfaces of the drains shall be cleaned according to the Society of Protective Coatings Spec. SSPC-SPI prior to painting.  
 Fiberglass pipe shall conform to ASTM D 2996, with short-time rupture strength hoop tensile stress of 30,000 p.s.i. minimum.  
 Galvanize clamping device according to AASHTO M232. Cost of clamping device and inserts is included with Floor Drains.

Hatched area to be poured after superstructure forms have been removed. Quantity of concrete included with Concrete Superstructure.

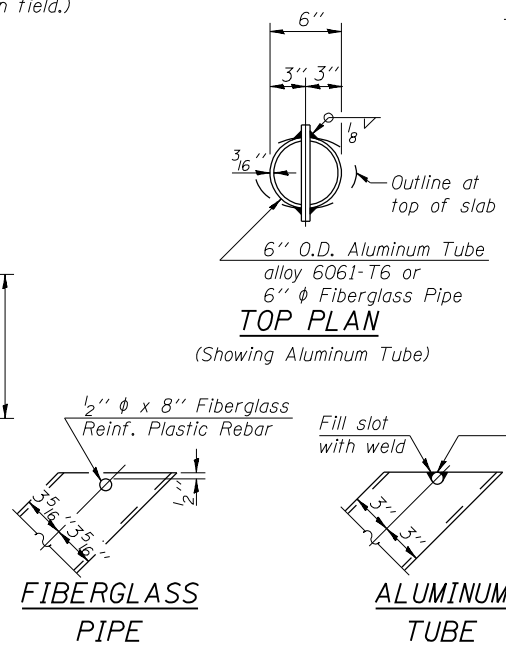


**SECTION THRU PARAPET**



**SECTION B-B**  
 \*\* Dimension as required by Pipe Clamp

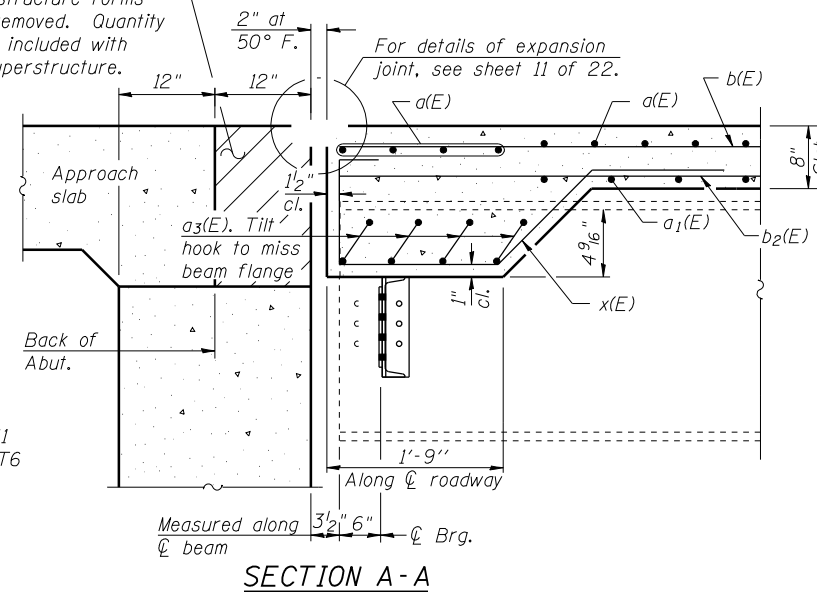
**TOP PLAN**



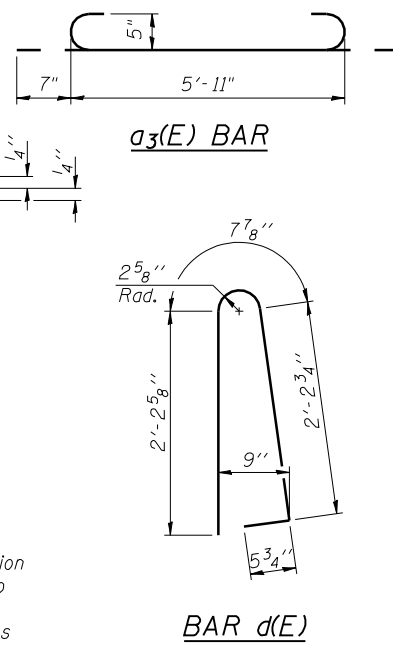
**TOP PLAN**

**FIBERGLASS PIPE**

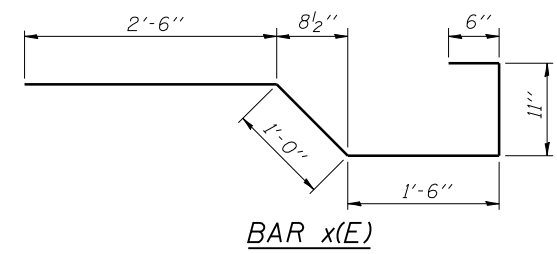
**ALUMINUM TUBE**



**SECTION A-A**



**BAR d1(E)**



**BAR x(E)**

**SUPERSTRUCTURE BILL OF MATERIAL**

| Bar                              | No. | Size | Length  | Shape |
|----------------------------------|-----|------|---------|-------|
| a(E)                             | 240 | #5   | 34'-6"  | —     |
| a1(E)                            | 209 | #5   | 34'-0"  | —     |
| a2(E)                            | 240 | #6   | 6'-6"   | —     |
| a3(E)                            | 40  | #5   | 7'-1"   | U     |
| b(E)                             | 228 | #5   | 31'-9"  | —     |
| b1(E)                            | 70  | #6   | 38'-11" | —     |
| b2(E)                            | 217 | #5   | 27'-7"  | —     |
| d(E)                             | 390 | #5   | 5'-7"   | U     |
| d1(E)                            | 390 | #5   | 7'-0"   | U     |
| e(E)                             | 84  | #4   | 15'-8"  | —     |
| e1(E)                            | 64  | #4   | 8'-0"   | —     |
| e2(E)                            | 42  | #4   | 15'-10" | —     |
| e3(E)                            | 12  | #4   | 25'-2"  | —     |
| e4(E)                            | 4   | #8   | 47'-8"  | —     |
| e5(E)                            | 8   | #8   | 8'-1"   | —     |
| e6(E)                            | 2   | #8   | 48'-3"  | —     |
| x(E)                             | 60  | #5   | 6'-5"   | U     |
| Concrete Superstructure          |     |      | Cu. Yd. | 207.8 |
| Reinforcement Bars, Epoxy Coated |     |      | Pound   | 44900 |

Bars indicated thus 1 x 2-#4 etc. indicates 1 line of bars with 2 lengths per line.



|                         |                      |           |
|-------------------------|----------------------|-----------|
| USER NAME = kah         | DESIGNED - SHL 02/13 | REVISED - |
| ESCA PROJECT NO. 988.14 | CHECKED - RDP 02/13  | REVISED - |
| PLOT DATE = 7/3/2014    | DRAWN - DWH 02/13    | REVISED - |
| 8:38:46 AM              | CHECKED - SHL 05/13  | REVISED - |

**STATE OF ILLINOIS DEPARTMENT OF TRANSPORTATION**

**SUPERSTRUCTURE DETAILS STRUCTURE NO. 097-0027**

SHEET NO. 8 OF 22 SHEETS

|                    |         |        |              |           |
|--------------------|---------|--------|--------------|-----------|
| F.A.P. RTE.        | SECTION | COUNTY | TOTAL SHEETS | SHEET NO. |
| 877                | 100B-1  | WHITE  | 54           | 27        |
| CONTRACT NO. 78231 |         |        |              |           |

ILLINOIS FED. AID PROJECT AID