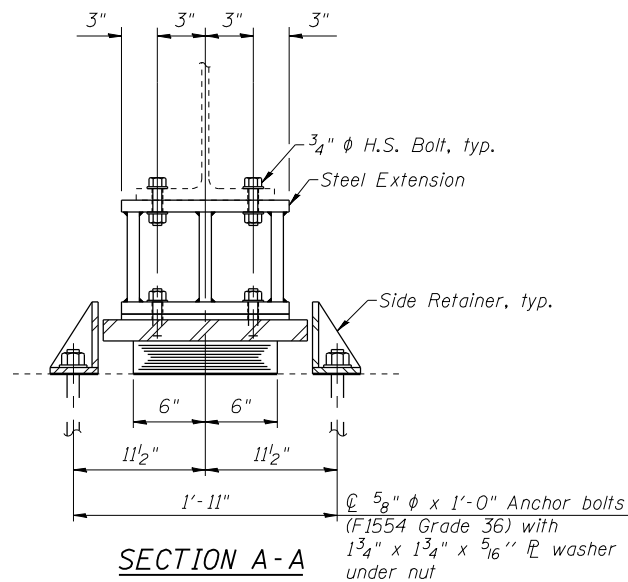
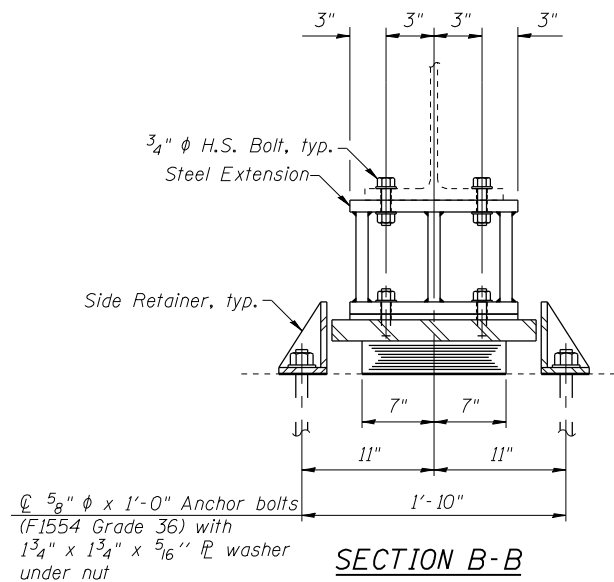


ELEVATION AT W. ABUT.

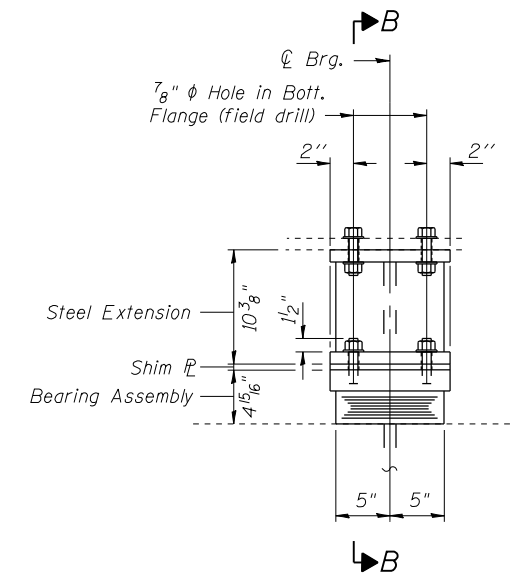
TYPE I ELASTOMERIC EXP. BRG.



SECTION A-A

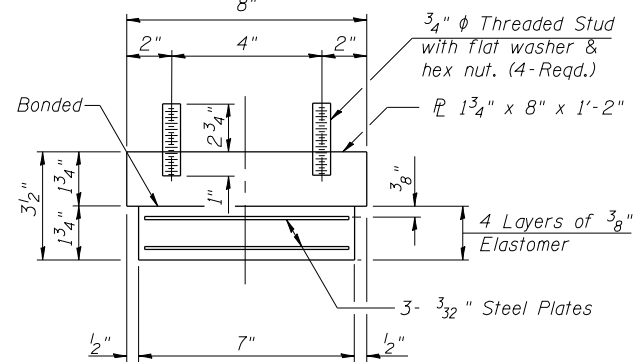


SECTION B-B



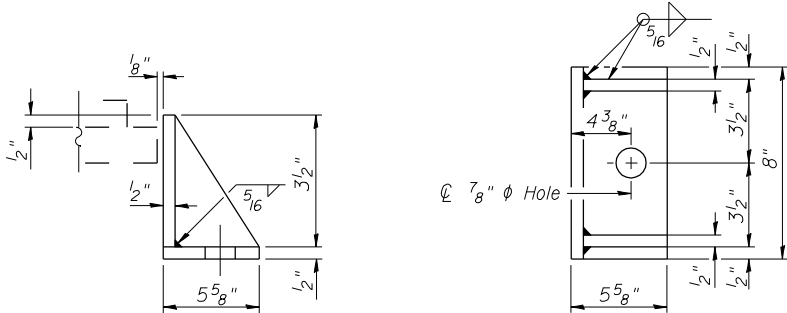
ELEVATION AT PIER 2

TYPE I ELASTOMERIC EXP. BRG.



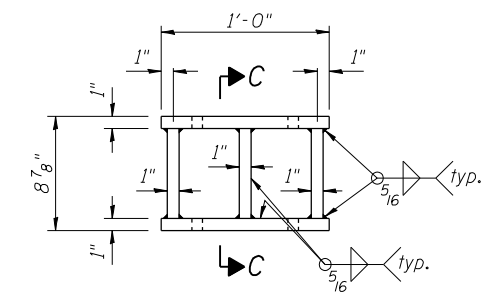
BEARING ASSEMBLY AT W. ABUT.

Note:
Shim plates shall not be placed under Bearing Assembly.



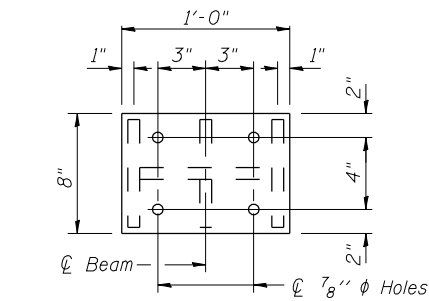
SIDE RETAINER AT W. ABUT.

Equivalent rolled angle with stiffeners will be allowed in lieu of welded plates.



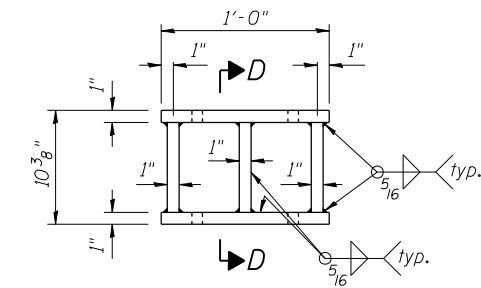
ELEVATION STEEL EXTENSION

SECTION C-C



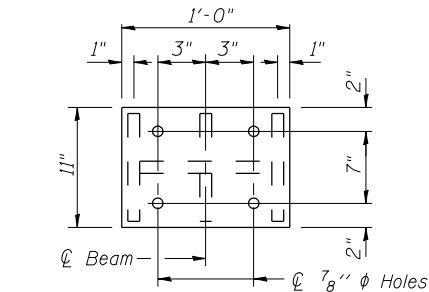
PLAN STEEL EXTENSION

WEST ABUTMENT STEEL EXTENSION



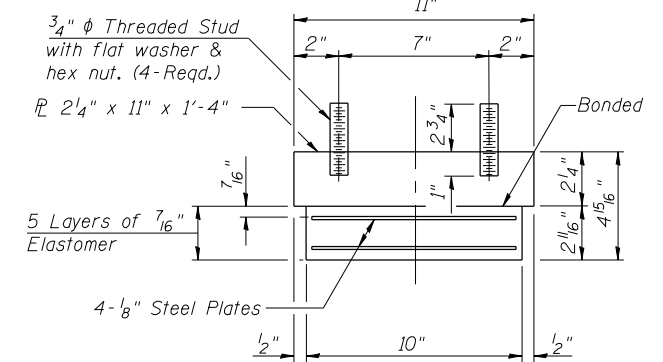
ELEVATION STEEL EXTENSION

SECTION D-D



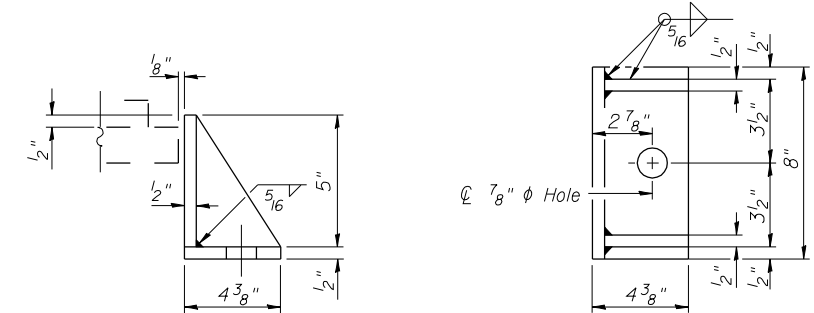
PLAN STEEL EXTENSION

PIER 2 STEEL EXTENSION



BEARING ASSEMBLY AT PIER 2

Note:
Shim plates shall not be placed under Bearing Assembly.



SIDE RETAINER AT PIER 2

Equivalent rolled angle with stiffeners will be allowed in lieu of welded plates.

BILL OF MATERIAL

Item	Unit	Total
Elastomeric Bearing Assembly Type I	Each	12
Anchor Bolts, 5/8"	Each	24

Notes:
Steel extensions are to be paid for as Furnishing and Erecting Structural Steel. Prior to ordering any steel extension material, the Contractor shall verify in the field all bearing height and steel extension dimensions. Two hardened washers required for each set of oversized holes. Anchor bolts shall be ASTM F1554 all-thread (or an Engineer-approved alternate material) of the grade(s) and diameter(s) specified. The corresponding specified grade of AASHTO M314 anchor bolts may be used in lieu of ASTM F1554. Anchor bolts for side retainers may be installed in holes drilled before or after members are in place.

Drilled and set anchor bolts shall be installed according to Article 521.06 of the Standard Specifications. Side retainers and other steel members required for the elastomeric bearing assembly shall be included in the cost of Elastomeric Bearing Assembly, Type I. The anchor bolt sizes and grades shown constitute a calculated seismic structural fuse. Substitution of higher diameter and/or grade anchor bolts will not be allowed. Two 1/8 in. adjusting shims shall be provided for each bearing in addition to all other plates or shims and placed as shown on bearing details. See sheet 15 of 22 for details of jacking and removing existing bearings.



USER NAME = kah	DESIGNED - SHL	03/13	REVISED -
ESCA PROJECT NO. 988.14	CHECKED - RDP	02/13	REVISED -
	DRAWN - DWH	02/13	REVISED -
PLOT DATE = 7/3/2014 8:39:30 AM	CHECKED - SHL	05/13	REVISED -

STATE OF ILLINOIS
DEPARTMENT OF TRANSPORTATION

BEARING DETAILS
STRUCTURE NO. 097-0027

SHEET NO. 14 OF 22 SHEETS

F.A.P. RTE.	SECTION	COUNTY	TOTAL SHEETS	SHEET NO.
877	100B-1	WHITE	54	33
ILLINOIS FED. AID PROJECT AID			CONTRACT NO. 78231	