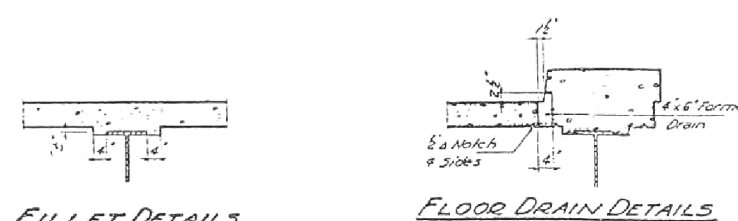
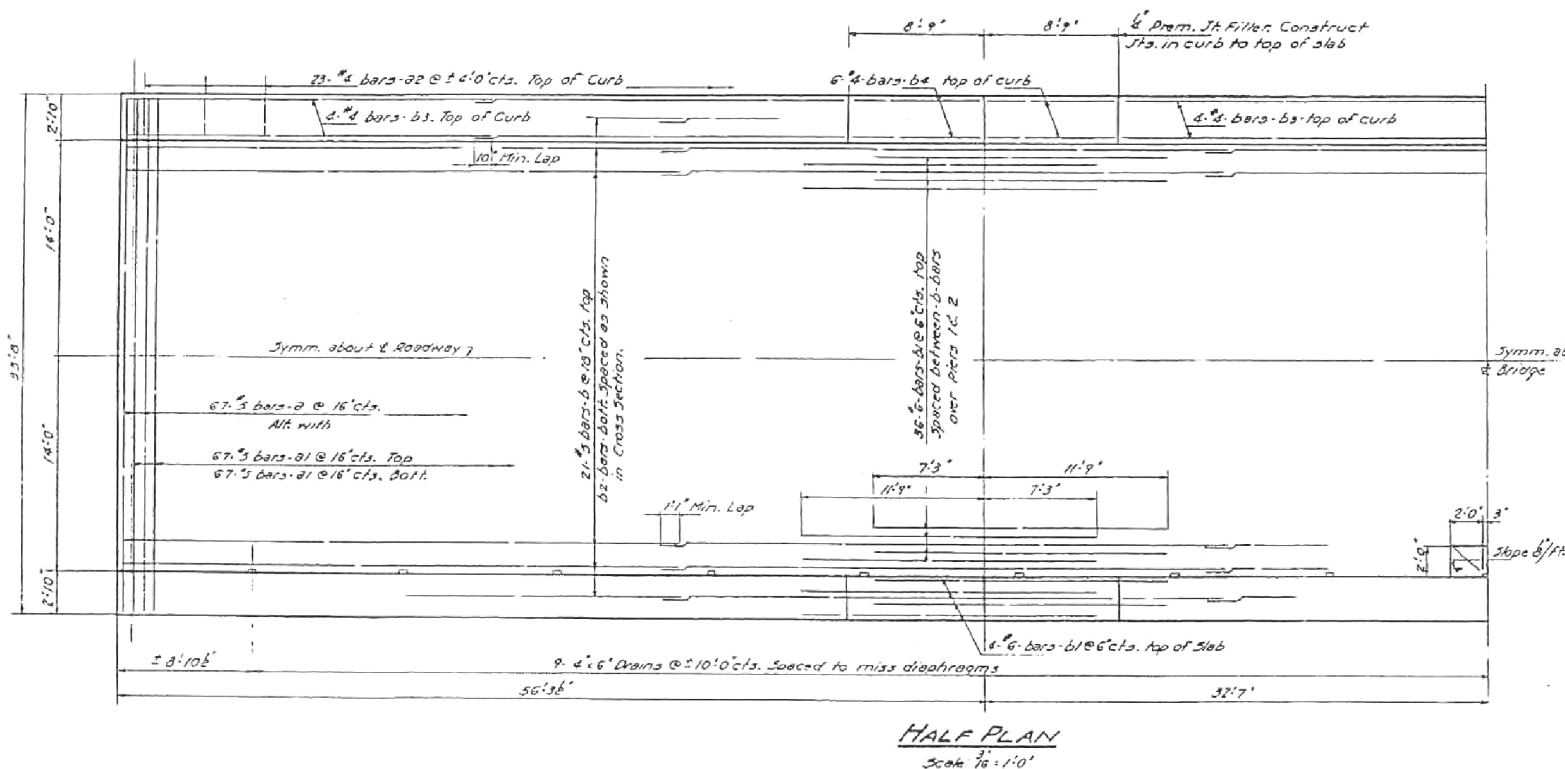
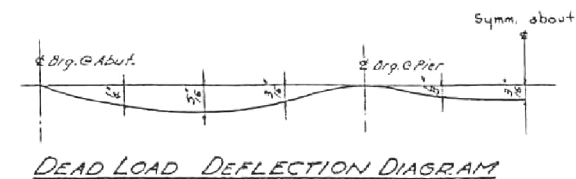
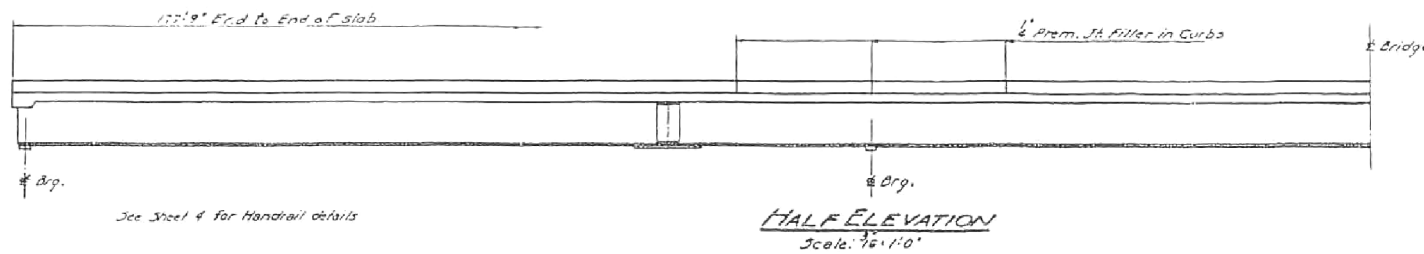
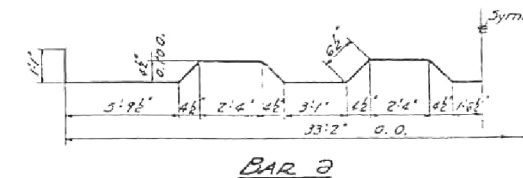


STATE OF ILLINOIS
DEPARTMENT OF PUBLIC WORKS & BUILDINGS
DIVISION OF HIGHWAYS

DATE	SECTION	COUNTY	TOTAL SHEETS	SHEET NO.	SHEET NO. 2
11/13	100B	White Gallatin	11	7	6 SHEETS
PROJECT		F-221(5)			

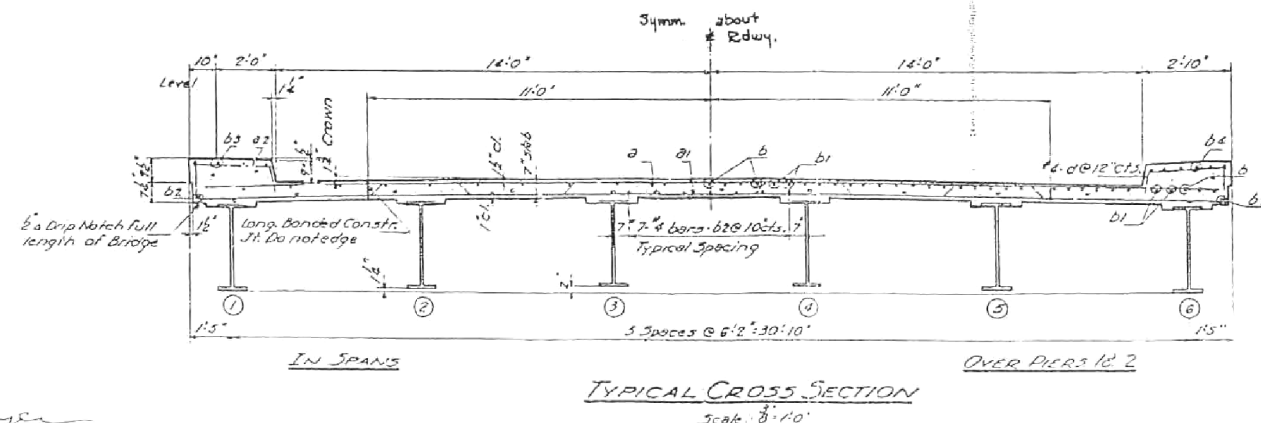


After all Structural Steel has been erected elevations of the top flanges of the beams shall be taken at intervals not to exceed 10 ft. From these elevations subtract the increment of deflection for these points determined from Dead Load Deflection Diagram. The elevations so obtained subtracted from the theoretical grade elevations, minus floor thickness, equals the fillet heights above top of beam.



BILL OF MATERIAL

Bar	No.	Size	Length	Shape
a	134	#5	36'-0"	U
a1	268	#5	33'-0"	—
a2	92	#4	2'-6"	—
b	105	#5	36'-6"	—
b1	88	#6	19'-0"	—
b2	222	#4	30'-2"	—
b3	48	#4	24'-0"	—
b4	48	#4	8'-6"	—
c	356	#4	1'-1"	—
Class II Concrete			Cu. Yds.	153.4
Reinforcement Bars			Lbs.	26,810
Structural Steel			Lbs.	18,060
Name Plates			Each	1



DESIGNED	M. G. Carril
CHECKED	H. J. C.
DRAWN	H. J. C.
CHECKED	H. J. C.

APRIL 13 1955
EXAMINED
PASSED
APPROVED

SUPERSTRUCTURE
F.A. RTE. 113 - SECTION 100-B
PROJECT F-221(5)
WHITE COUNTY
STATION 48+70

FILE NAME = D978231-sht-existingstructure.dgn
MODEL = Default
PLOT DRIVER = IODT_PDF.plt.ctb



USER NAME = twalker	DESIGNED - MCV	REVISED -
FILE NAME = D978231-sht-existingstructure.dgn	DRAWN - CMM	REVISED -
PLOT SCALE = 48.0000 / in.	CHECKED - MTM	REVISED -
PLOT DATE = 7/8/2014	DATE -	REVISED -

STATE OF ILLINOIS
DEPARTMENT OF TRANSPORTATION

EXISTING STRUCTURE PLANS
FOR INFORMATION ONLY

SCALE: NONE SHEET NO. 4 OF 8 SHEETS STA. TO STA.

F.A.P. RTE.	SECTION	COUNTY	TOTAL SHEETS	SHEET NO.
877	100B-1	WHITE	54	43
CONTRACT NO. 78231				
ILLINOIS FED. AID PROJECT				