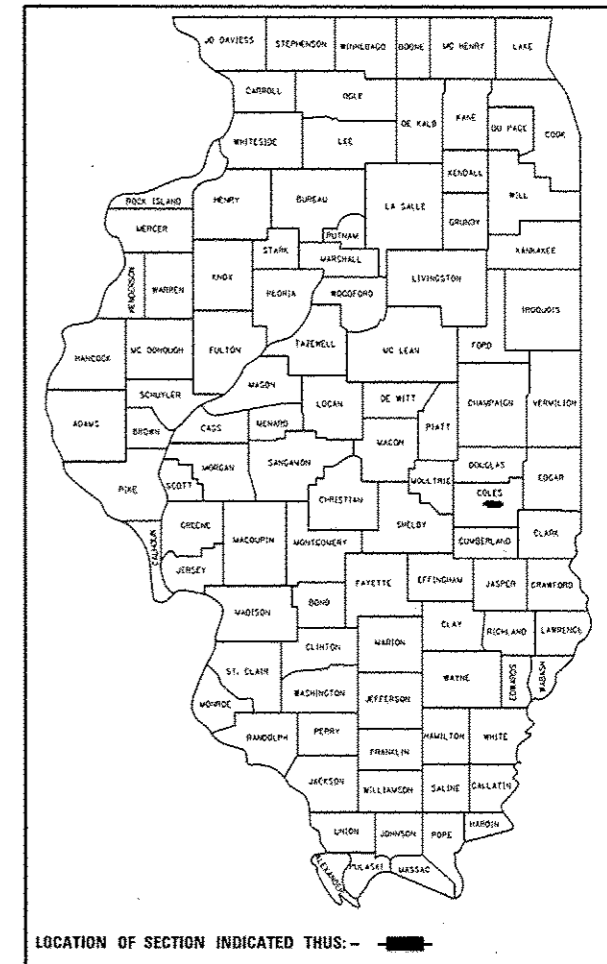


STATE OF ILLINOIS
DEPARTMENT OF TRANSPORTATION
DIVISION OF HIGHWAYS
**PROPOSED
HIGHWAY PLANS**

F.A.P. RTE.	SECTION	COUNTY	TOTAL SHEETS	SHEET NO.
91	5N	COLES	271	1
ILLINOIS CONTRACT NO. 74423				

D-97-002-10



FOR INDEX OF SHEETS, SEE SHEET NO. 2

STATION EQUATIONS:

STA. 6+00.00 = STA. 20+00.00
 STA. 27+51.69 (E. HARRISON AVE. [A]) = STA. 607+50.00 (IL 16)
 STA. 31+53.28 (E. HARRISON AVE. [A]) = STA. 50+00.00 (E. HARRISON AVE. [B])
 STA. 60+83.06 (E. HARRISON AVE. [B]) = STA. 0+00.00 (CONNECTOR ROAD)
 STA. 2+54.12 (CONNECTOR ROAD) = STA. 22+29.49 (OLD E. HARRISON AVE.)
 STA. 72+84.18 (E. HARRISON AVE. [B]) = STA. 35+30.22 (OLD E. HARRISON AVE.)

F.A.P. ROUTE 91 (IL. RTE. 16)

SECTION 5N

PROJECT: ACNHPP-ALHSIP-0091(073)

INTERSECTION
COLES COUNTY

C-97-009-10

ADT = 5050 (IL 16)

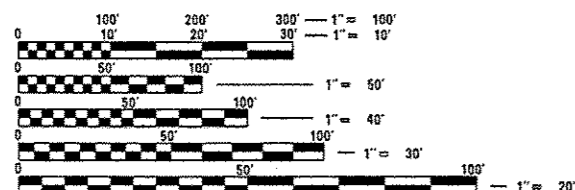
PROJECT BEGINS:
STA. 6+00.00
(E. HARRISON AVE.)

AREA OF
RE-ALIGNMENT
OF E. HARRISON AVE.

PROJECT ENDS:
STA. 616+45.89 (IL 16)

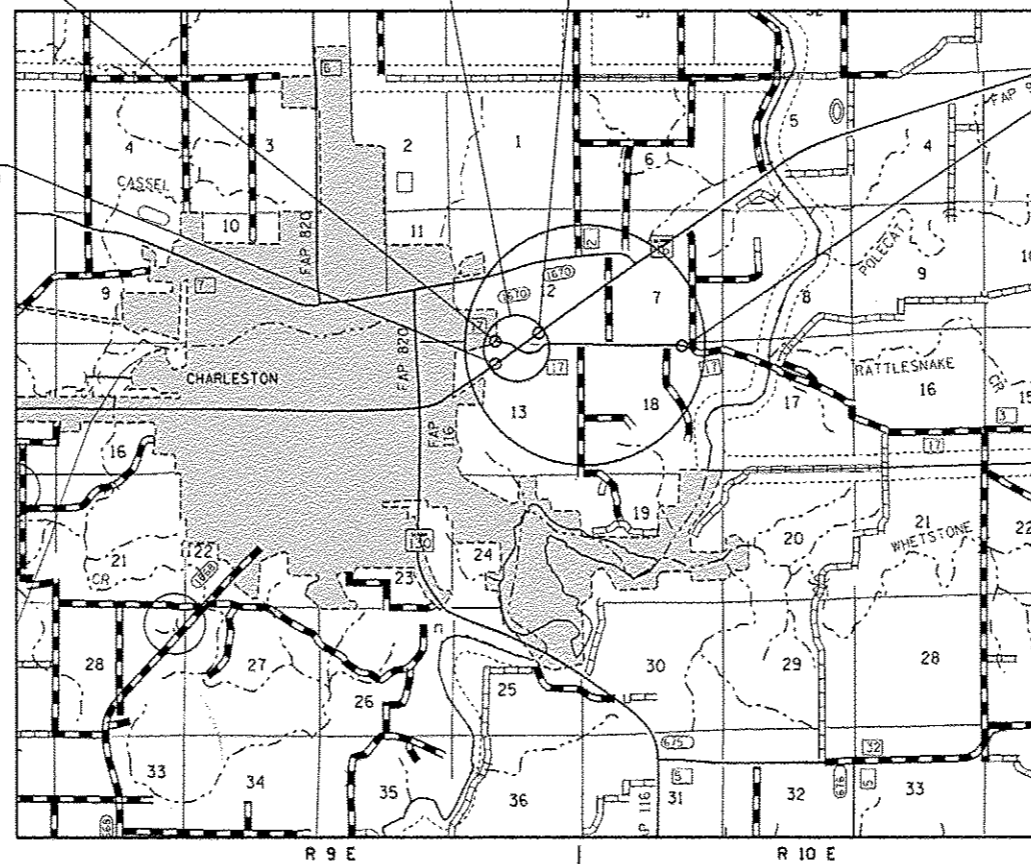
PROJECT BEGINS:
STA. 599+20.17 (IL 16)

PROJECT ENDS:
STA. 87+51.00
(E. HARRISON AVE.)



FULL SIZE PLANS HAVE BEEN PREPARED USING STANDARD ENGINEERING SCALES. REDUCED SIZED PLANS WILL NOT CONFORM TO STANDARD SCALES. IN MAKING MEASUREMENTS ON REDUCED PLANS, THE ABOVE SCALES MAY BE USED.

J.U.L.I.E.
JOINT UTILITY LOCATION INFORMATION FOR EXCAVATION
1-800-892-0123
OR 811



PROJECT ENGINEER: TOM RONAN
PROJECT MANAGER: JEFF DAVISON
PHONE: (217)-342-8320
CONTRACT NO. 74423

GROSS LENGTH = 13,610.10 FT. = 2.578 MILES
NET LENGTH = 13,610.10 FT. = 2.578 MILES

STATE OF ILLINOIS
DEPARTMENT OF TRANSPORTATION
DIVISION OF HIGHWAYS

SUBMITTED May 08 20 14
Roger L. Distel
DEPUTY DIRECTOR OF HIGHWAYS, REGION ENGINEER

June 27 20 14
John D. Baranzelli PE
ENGINEER OF DESIGN AND ENVIRONMENT

June 27 20 14
Omer Osman PE
DIRECTOR OF HIGHWAYS, CHIEF ENGINEER

PRINTED BY THE AUTHORITY
OF THE STATE OF ILLINOIS