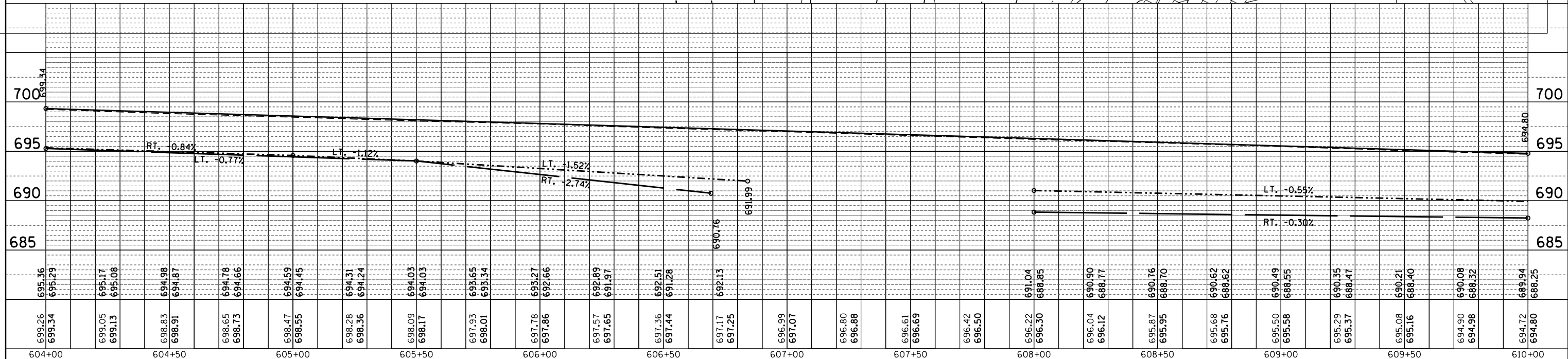
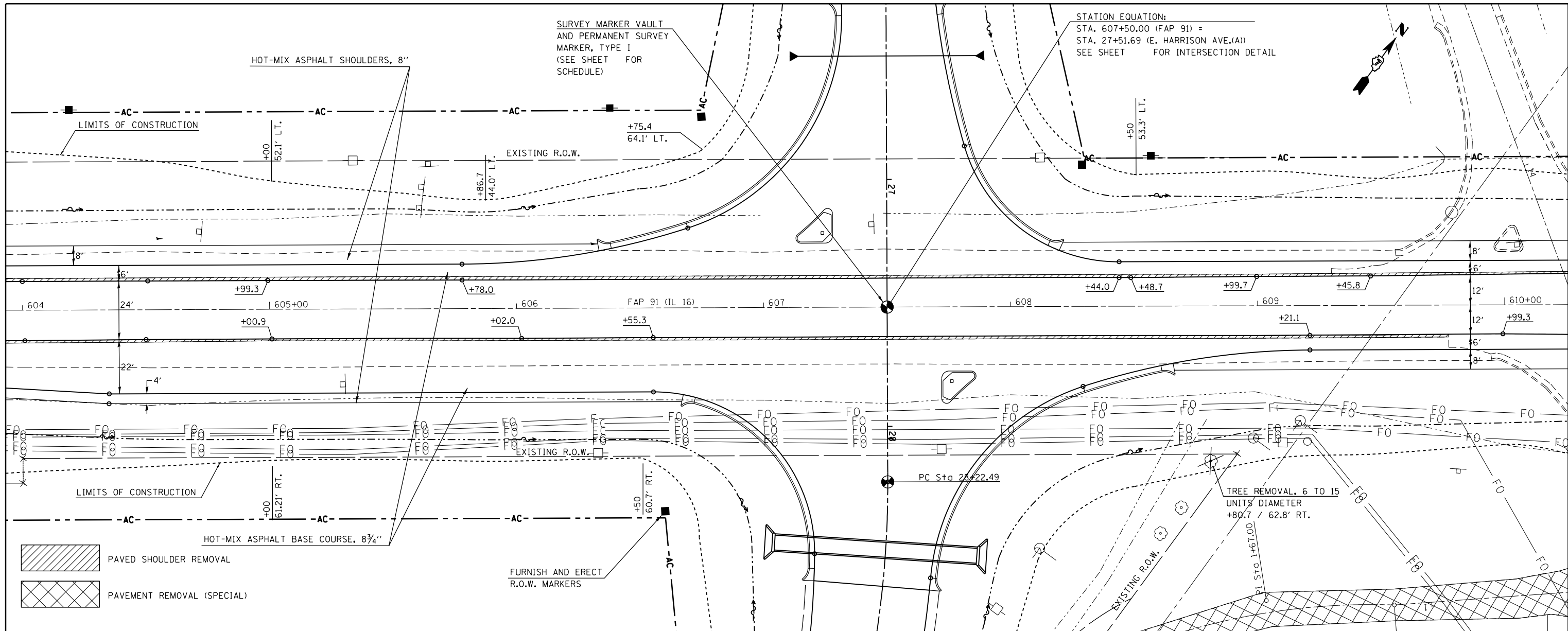


PLAN	SURVEYED	DATE
	PLOTTED	BY
	ALIGNED	
	CHECKED	
	FILED	
	NO.	

PROFILE	SURVEYED	DATE
	PLOTTED	BY
	GRADES CHECKED	
	STRUCTURE	
	NOTATIONS	
	NO.	



FILE NAME =	USER NAME = steffennk	DESIGNED -	REVISED -	STATE OF ILLINOIS DEPARTMENT OF TRANSPORTATION	PLAN - PROFILE IL. RTE. 16	F.A.P. RTE. 91	SECTION 5N	COUNTY Coles	TOTAL SHEETS 271	SHEET NO. 40
c:\pwork\pwork\stefennk\d0158776\077423-sht-plan.dgn	PLOT SCALE = 40.0000' / in.	DRAWN -	REVISED -			CONTRACT NO. 74423				
Default	PLOT DATE = 5/7/2014	CHECKED -	REVISED -			ILLINOIS FED. AID PROJECT				
Default		DATE -	REVISED -							

SCALE: 20 SHEET 3 OF 34 SHEETS STA. 604+00 TO STA. 610+00