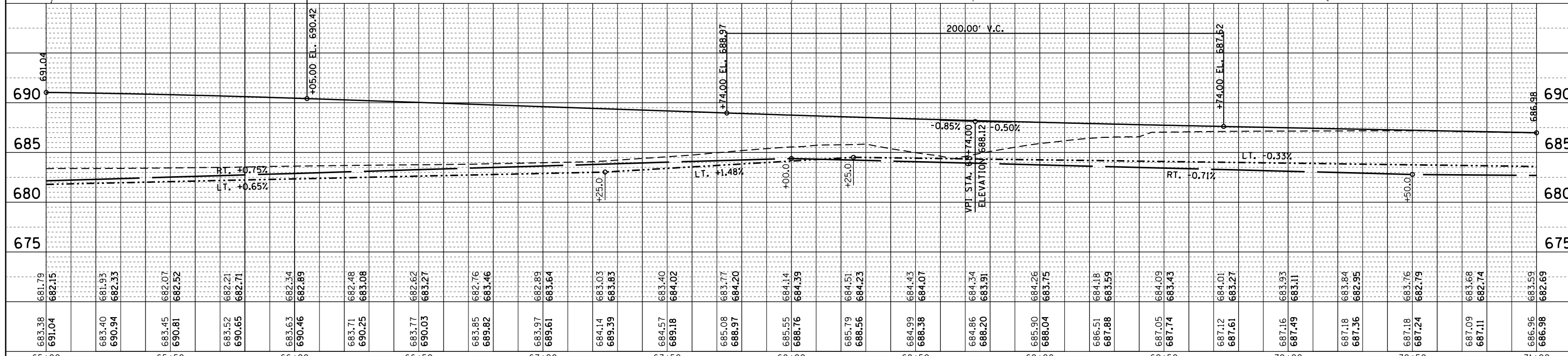
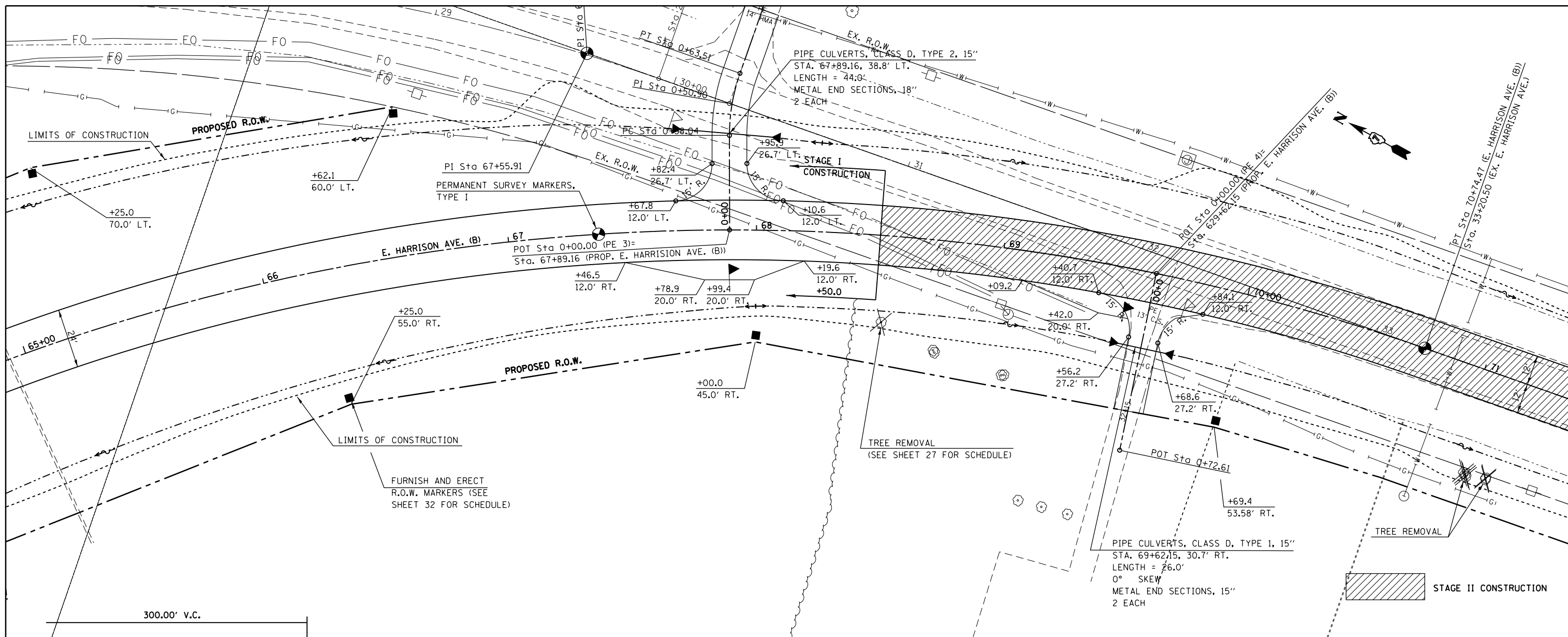


PLAN	SURVEYED	DATE
	PLOTTED	BY
	ALIGNED	
	CHECKED	
	FILED	
	NO.	

PROFILE	SURVEYED	DATE
	PLOTTED	BY
	GRADES	
	CHECKED	
	STRUCTURE	
	NOTATIONS	
	CHKD	
	NO.	



FILE NAME =	USER NAME = steffenmk	DESIGNED -	REVISED -	STATE OF ILLINOIS DEPARTMENT OF TRANSPORTATION	E. HARRISON AVE. (B) STAGE I & STAGE III PLAN AND PROFILE	F.A.P. RTE. 91	SECTION 5N	COUNTY Coles	TOTAL SHEETS 271	SHEET NO. 49
c:\pwork\pwork\stefjenmk\d0158776\077423-sht-plan.dgn	423-sht-plan.dgn	DRAWN -	REVISED -			CONTRACT NO. 74423				
PLOT SCALE = 40.0000' / in.	CHECKED -	REVISED -	REVISED -			ILLINOIS FED. AID PROJECT				
Default	DATE -	REVISED -	REVISED -			SCALE: 20	SHEET 12 OF 34 SHEETS	STA. TO STA.		