

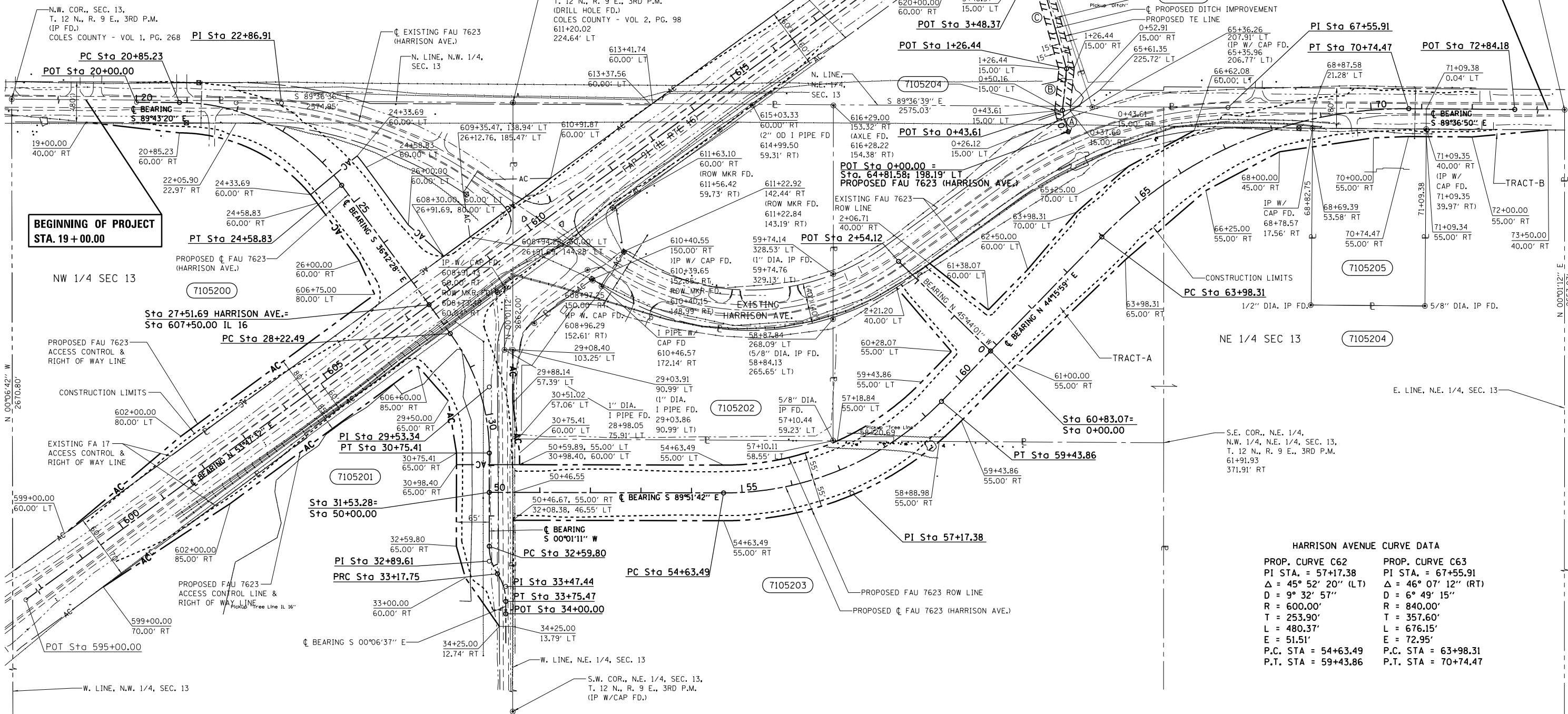
T. 12 N., R. 9 E., 3rd P.M., CHARLESTON TWP.



HARRISON AVENUE CURVE DATA

PROP. CURVE C60	PROP. CURVE C61	PROP. CURVE C64	PROP. CURVE C65
PI STA. = 22+86.91	PI STA. = 29+53.34	PI STA. = 32+89.61	PI STA. = 33+47.44
Δ = 53° 30' 52" (RT)	Δ = 36° 13' 39" (RT)	Δ = 33° 12' 03" (LT)	Δ = 33° 04' 15" (RT)
D = 14° 19' 26"	D = 14° 19' 26"	D = 57° 17' 45"	D = 57° 17' 45"
R = 400.00'	R = 400.00'	R = 100.00'	R = 100.00'
T = 201.68'	T = 130.85'	T = 29.81'	T = 29.69'
L = 373.60'	L = 252.92'	L = 57.95'	L = 57.72'
E = 47.97'	E = 20.86'	E = 4.35'	E = 4.31'
P.C. STA = 20+85.23	P.C. STA = 28+22.49	P.C. STA = 32+59.80	P.C. STA = 33+17.75
P.T. STA = 24+58.83	P.T. STA = 30+75.41	P.T. STA = 33+17.75	P.T. STA = 33+75.47

- Ⓐ - N 15° 05' 46" W
 - Ⓑ - N 5° 37' 32" E
 - Ⓒ - N 15° 46' 43" W
 - Ⓓ - N 19° 49' 38" W
 - Ⓔ - N 30° 52' 54" W
 - Ⓕ - N 29° 11' 35" W
- N.E. COR., SEC. 13,
T. 12 N., R. 9 E., 3RD P.M.
(R.R. SPIKE FD.)
COLES COUNTY
VOL 1, PG. 334



**BEGINNING OF PROJECT
STA. 19+00.00**

**END OF PROJECT
STA. 73+50.00**

HARRISON AVENUE CURVE DATA

PROP. CURVE C62	PROP. CURVE C63
PI STA. = 57+17.38	PI STA. = 67+55.91
Δ = 45° 52' 20" (LT)	Δ = 46° 07' 12" (RT)
D = 9° 32' 57"	D = 6° 49' 15"
R = 600.00'	R = 840.00'
T = 253.90'	T = 357.60'
L = 480.37'	L = 676.15'
E = 51.51'	E = 72.95'
P.C. STA = 54+63.49	P.C. STA = 63+98.31
P.T. STA = 59+43.86	P.T. STA = 70+74.47

PARCEL	OWNER	AREA TAKEN		EASEMENT	AREA REM	INST	RECORDED			EXCESS	
		ADD	EXIST				MICRO FILM NO	DATE	BOOK	PAGE	AREA
7105200	BETIE ARLENE COX, TRUSTEE	2.098	0.000		9.902						
7105201	BOSTIC ILLINOIS INVESTMENTS LLC	1.567	0.375		25.908						
7105202	STORAGE EXPRESS HOLDINGS LLC	0.008	0.000		3.553						
7105203	THE ESTATE OF RACHEL O. HAYS	1.962	0.000		57.018						
7105204	JOHN M. FINLEY & BONNIE FINLEY	3.067	0.000	0.014	38.843						
	TRACT-A	3.010	0.000								
	TRACT-B	0.057	0.000								
	TE			0.014							
7105205	JOHN M. FINLEY & BONNIE FINLEY	0.115	0.000		1.895						
7105206	FIRST MID-ILLINOIS BANK & TRUST, N.A., AS TRUSTEE			0.275							

NOTE:
BEARINGS ARE REFERENCED TO THE ILLINOIS STATE PLANE COORDINATE SYSTEM, EAST ZONE DATUM OF 1983(07)

⊙ - MONUMENT FD. (AS NOTED)
⊠ - ROW MARKER

S.E. COR., N.E. 1/4, SEC. 13,
T. 12 N., R. 9 E., 3RD P.M.
(IP FD.)
COLES COUNTY - VOL 1, PG. 334

USER NAME = steffennik	DESIGNED - IDOT	REVISED - 11/28/12
FILE NAME = D774423-shr-row.dgn	DRAWN - BEB	REVISED - 01/23/13
PLOT SCALE = 200.0000' / in.	CHECKED - MER	REVISED -
PLOT DATE = 5/7/2014	DATE - 08/30/12	REVISED -

**STATE OF ILLINOIS
DEPARTMENT OF TRANSPORTATION**

RIGHT OF WAY PLANS

PROJECT	JOB NO. R-97-005-11
SHEET NO. 1 OF 1 SHEETS	STA. 19+00.00 TO STA. 73+50.00

F.A.P. RTE.	SECTION	COUNTY	TOTAL SHEETS	SHEET NO.
91	5N	COLES	271	91
CONTRACT NO. 74423				
FED. ROAD DIST. NO. ILLINOIS FED. AID PROJECT				