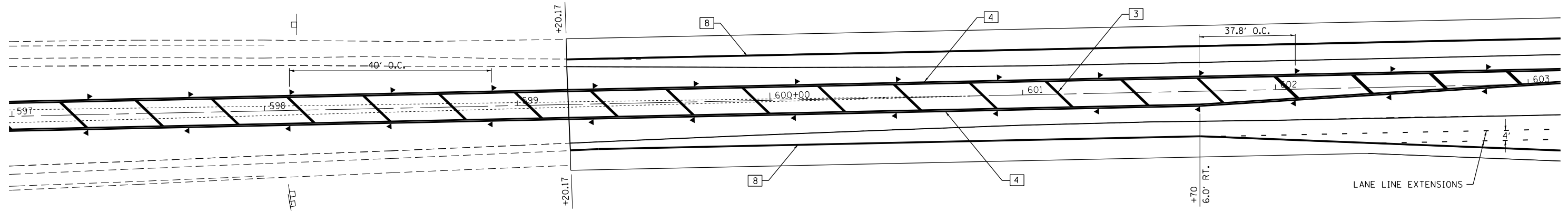
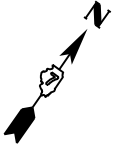


PAVEMENT MARKING LEGEND

- | | |
|-----------------------------------|-------------------------------|
| 1 4" (100) SKIP-DASH (YELLOW) | 8 4" (100) SOLID (WHITE) |
| 2 4" (100) SOLID (YELLOW) | 9 12" (300) DIAGONAL (WHITE) |
| 3 12" (300) DIAGONAL (YELLOW) | 10 6" (150) SOLID (WHITE) |
| 4 4" (100) DOUBLE YELLOW (NARROW) | 11 24" (600) STOP BAR (WHITE) |
| 5 12" (300) SOLID WHITE | 12 8" (200) SOLID (WHITE) |
| 6 RESERVED | 13 4" (100) PARKING WHITE |
| 7 6" (150) SKIP-DASH (WHITE) | |

TYPICAL PAVEMENT MARKERS LEGEND

- ◆ TWO-WAY AMBER MARKER
- ▶ ONE-WAY AMBER MARKER
- ▷ ONE-WAY CRYSTAL MARKER



FILE NAME =	USER NAME = steffenmk	DESIGNED -	REVISED -
ci:\pw\work\p\idot\steffenmk\d0158776\074423-sht-striping.dgn		DRAWN -	REVISED -
Default	PLOT SCALE = 48.0000' / in.	CHECKED -	REVISED -
	PLOT DATE = 5/7/2014	DATE -	REVISED -

STATE OF ILLINOIS
DEPARTMENT OF TRANSPORTATION

STRIPING PLAN
IL RTE. 16

SCALE: 20 220 SHEET 2 OF 10 SHEETS STA. 597+00 TO STA. 603+00

F.A.P. RTE.	SECTION	COUNTY	TOTAL SHEETS	SHEET NO.
91	5N	COLES	271	94
CONTRACT NO. 74423				
ILLINOIS FED. AID PROJECT				