



SPEED LIMIT
30

R2-1

REMOVE, STORE AND RE-ERECT
SIGN PANEL, STA. +38.0



(2) SIGN PANEL, TYPE 1,
STA. +50.0 LT.
(2)W1-8
18''X24''

E. HARRISON AVE. (A) BEGINS:
STA. 20+00.00

POT Sta 0+00.00 (PE 2) =
STA. 21+66.65 E. HARRISON AVE. (A)



(2) SIGN PANEL, TYPE 1,
STA. +72.0 LT.
(2)W1-8
18''X24''

STATION EQUATION:
STA. 6+00.00 (EX. E. HARRISON AVE)=
STA. 20+00.00 E. HARRISON AVE. (A)

POT Sta 0+00.00 (PE 1) =
STA. 20+89.55 E. HARRISON AVE. (A)

POT Sta 0+00.00 (PE 3) =
STA. 21+49.95 E. HARRISON AVE. (A)

W1-2R
(2) SIGN PANEL, TYPE 1 36''X36''
STA. +85.0 RT.



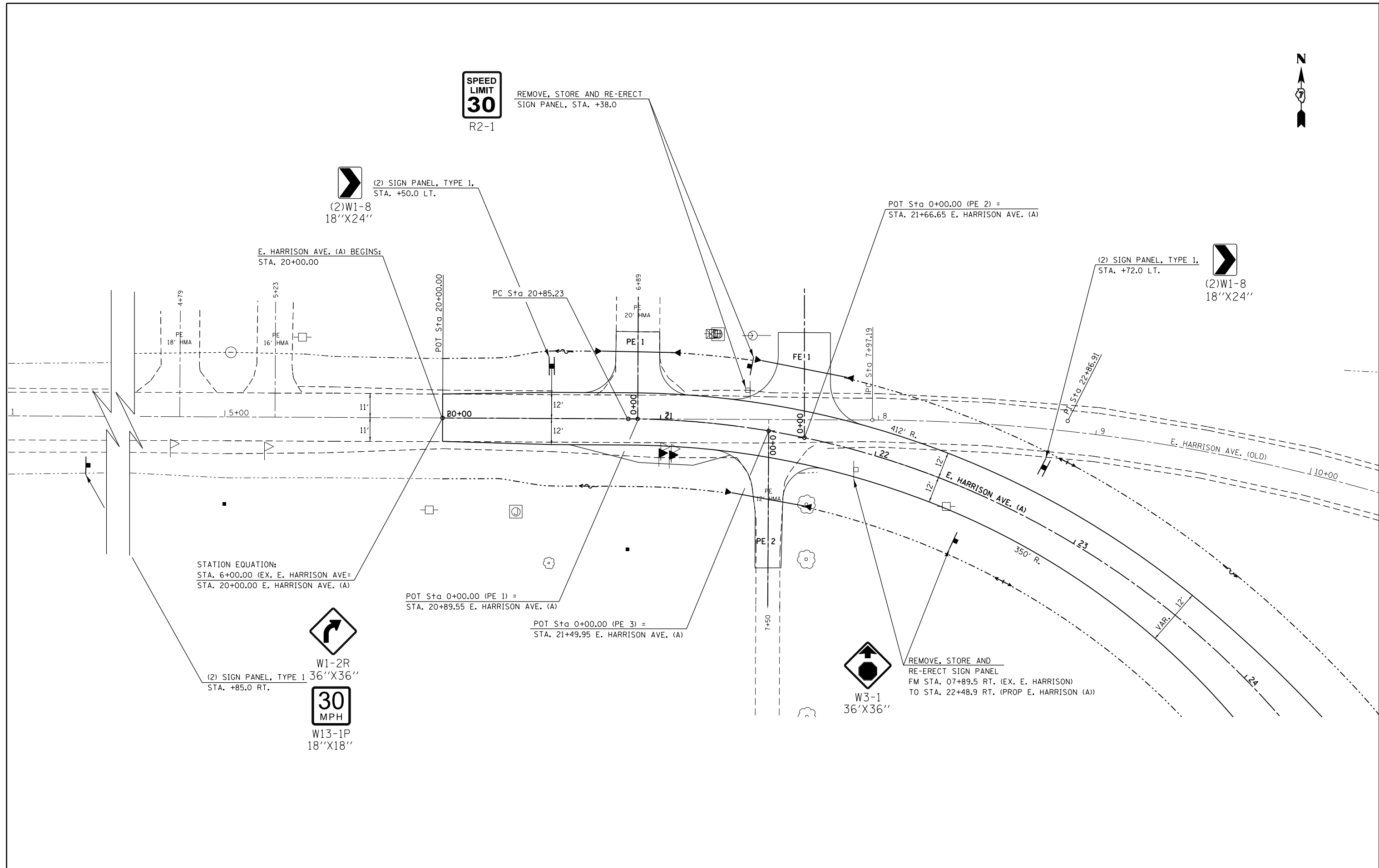
30
MPH

W13-1P
18''X18''



W3-1
36''X36''

REMOVE, STORE AND
RE-ERECT SIGN PANEL
FM STA. 07+89.5 RT. (EX. E. HARRISON)
TO STA. 22+48.9 RT. (PROP E. HARRISON (A))



FILE NAME = c:\pwork\pwork\stef\enmk\d0158776\074423-sh1-signing.dgn	USER NAME = stef\enmk	DESIGNED -	REVISED -	STATE OF ILLINOIS DEPARTMENT OF TRANSPORTATION	SIGNING PLAN E. HARRISON AVE. (A)			F.A.P. RTE.	SECTION	COUNTY	TOTAL SHEETS	SHEET NO.
	PLOT SCALE = 48.0000' / in.	CHECKED -	REVISED -					91	5N	Coles	271	108
PLOT DATE = 5/7/2014	DATE -	REVISED -	REVISED -	SCALE: 20	SHEET 6	OF 15 SHEETS	STA. 20+00	TO STA. 24+00	ILLINOIS FED. AID PROJECT			
											CONTRACT NO. 74423	