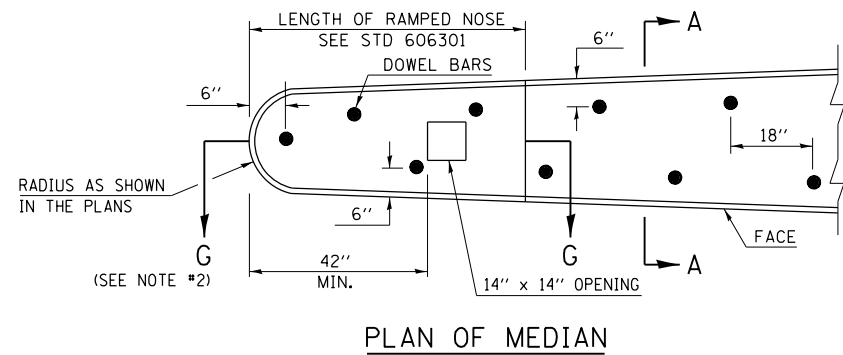
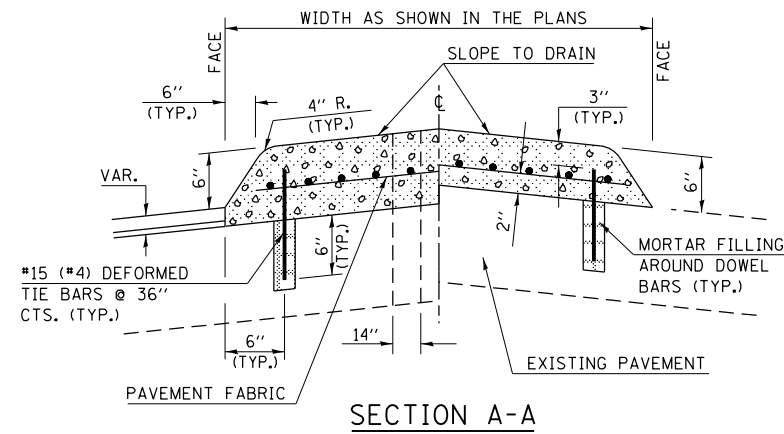
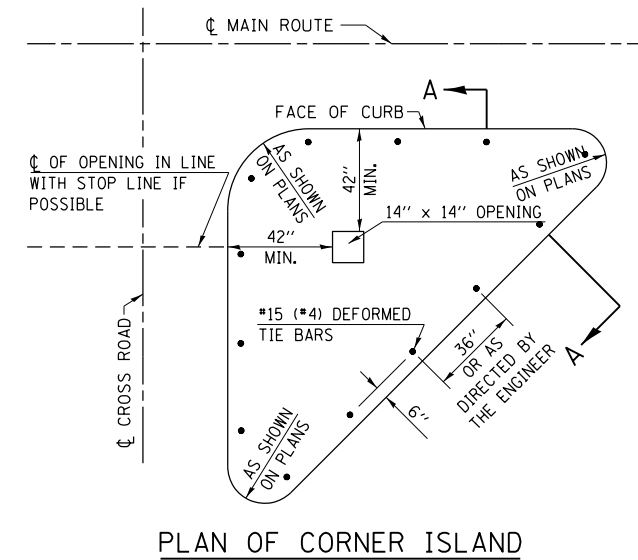


DETAIL OF CONCRETE MEDIAN, TYPE SM-6 (SM-15) (DOWELED)



- ### GENERAL NOTES
1. THE GENERAL NOTES FOR STANDARD 606301 SHALL APPLY.
 2. SECTION G-G SHALL BE THE SAME AS SHOWN ON STANDARD 606301.
 3. DOWEL BARS @ 36" CTS. OR AS DIRECTED BY THE ENGINEER.
 4. THIS WORK WILL BE PAID FOR AT THE CONTRACT UNIT PRICE PER SQ FOOT FOR CONCRETE MEDIAN, TYPE SM-6 (SM-15) (DOWELED), INCLUDING THE COST OF FURNISHING AND INSTALLING THE DOWEL BARS, MORTAR FILLING, PAVEMENT FABRIC AND THE REMOVAL AND DISPOSAL OF THE EXISTING PAVEMENT FOR THE 14" x 14" OPENING, IF REQUIRED, AND NO ADDITIONAL COMPENSATION WILL BE ALLOWED.



FILE NAME =	USER NAME = steffenmk	DESIGNED -	REVISED -	STATE OF ILLINOIS DEPARTMENT OF TRANSPORTATION	CONCRETE MEDIAN, TYPE SM-6 (SM15) (DOWELLED)	F.A.P. RTE.	SECTION	COUNTY	TOTAL SHEETS	SHEET NO.	
ci:\pw\work\p\idot\steffenmk\d0158776\074423-sh1-details.dgn	74423-sh1-details.dgn	DRAWN -	REVISED -			91	5N	COLES	271	121	
Default	PLOT SCALE = 100.0000' / 1in.	CHECKED -	REVISED -			CONTRACT NO. 74423					
	PLOT DATE = 5/7/2014	DATE -	REVISED -			ILLINOIS FED. AID PROJECT					
					SCALE: N/A	SHEET 1 OF 1 SHEETS		STA. TO STA.			