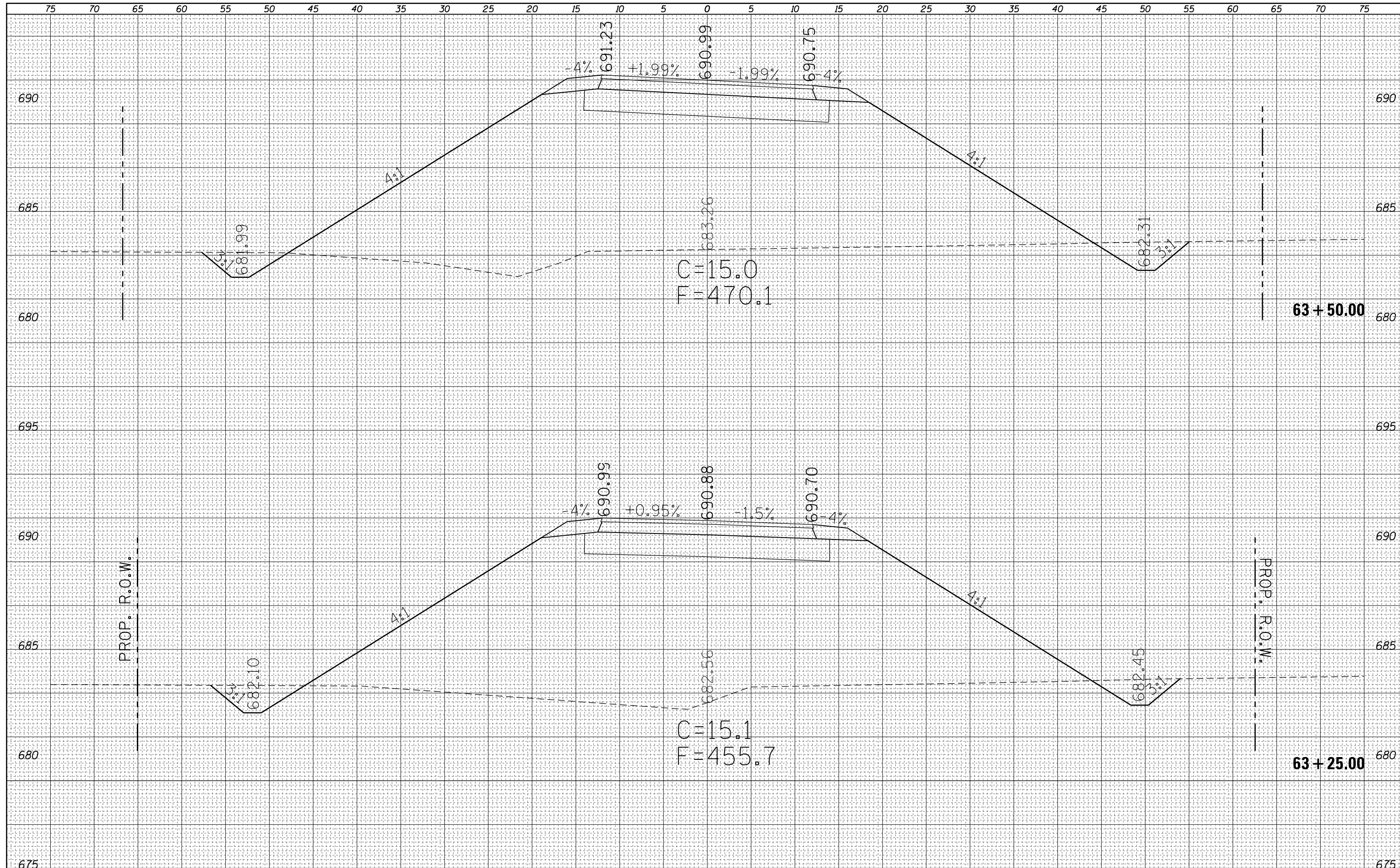


FINAL SURVEY NO.	SURVEYED PLOTTED TEMPLATE AREAS CHECKED	BY	DATE

ORIGINAL SURVEY NO.	SURVEYED PLOTTED TEMPLATE AREAS CHECKED	BY	DATE



FILE NAME =	USER NAME = steffenmk	DESIGNED -	REVISED -	<b>STATE OF ILLINOIS</b> <b>DEPARTMENT OF TRANSPORTATION</b>	<b>CROSS SECTIONS</b> <b>E. HARRISON B</b>	F.A.P. RTE. 91	SECTION 5N	COUNTY Coles	TOTAL SHEETS 271	SHEET NO. 189	
		DRAWN -	REVISED -			CONTRACT NO. 74423					
		CHECKED -	REVISED -			ILLINOIS FED. AID PROJECT					
		DATE -	REVISED -			SCALE: 5	SHEET 22	OF 41	SHEETS	STA. 63+25.00	TO STA. 63+50.00