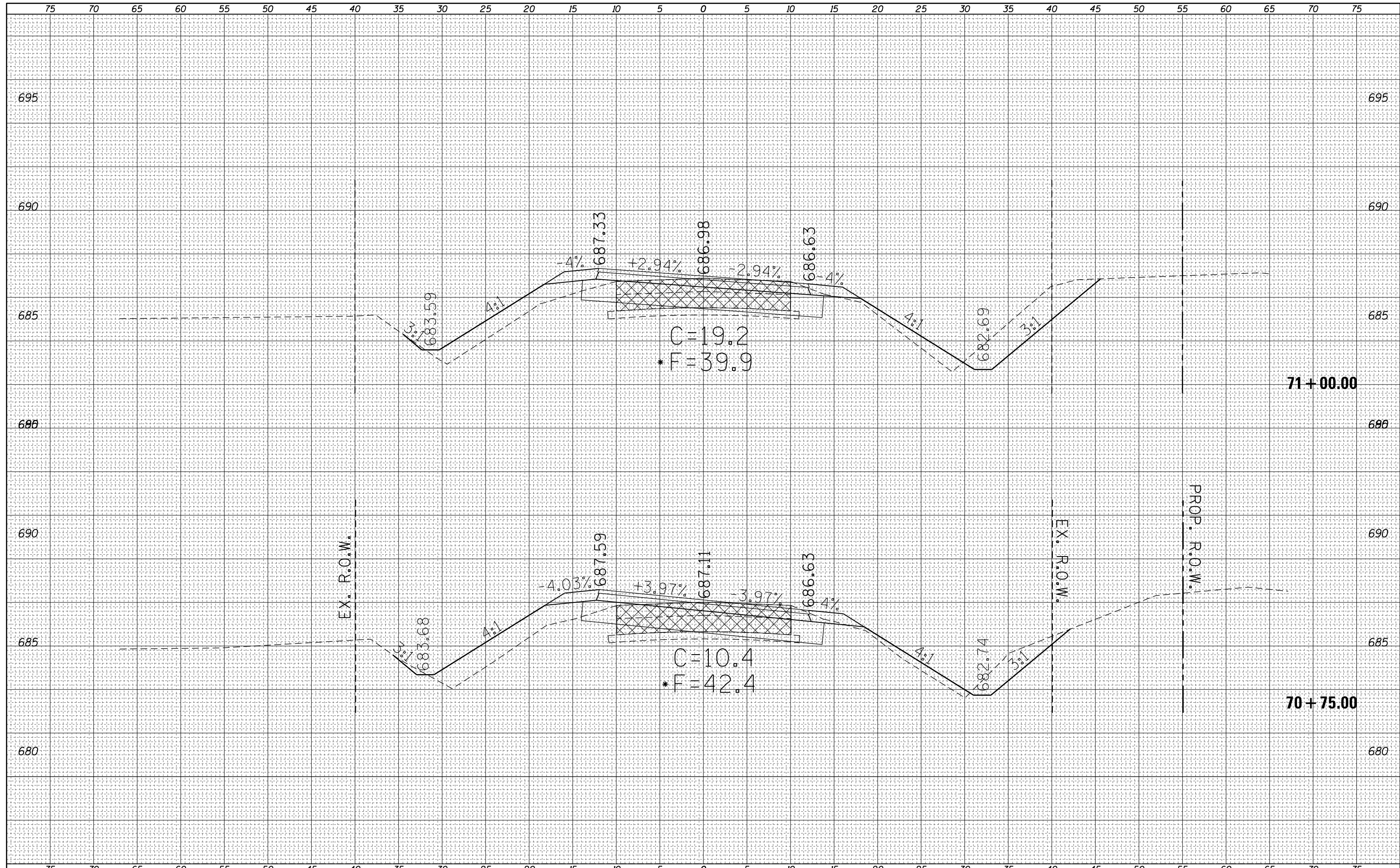


DATE	
BY	
FINAL SURVEY	SURVEYED
NOTE BOOK	PLOTTED
NO.	TEMPLATE
	AREAS CHECKED

DATE	
BY	
ORIGINAL SURVEY	SURVEYED
NOTE BOOK	PLOTTED
NO.	TEMPLATE
	AREAS CHECKED



FILE NAME =	USER NAME = steffenmk	DESIGNED -	REVISED -	STATE OF ILLINOIS DEPARTMENT OF TRANSPORTATION	CROSS SECTIONS E. HARRISON B	F.A.P. RTE.	SECTION	COUNTY	TOTAL SHEETS	SHEET NO.
c:\pw\work\p\dot\steffenmk\d0158776\0774423-ssc-sh1-PRHarrisonB.dgn	DRAWN -	REVISED -	91			5N	Coles	271	204	
PLOT SCALE = 10.0000' / in.	CHECKED -	REVISED -	CONTRACT NO. 74423							
Default	DATE - 5/7/2014	REVISED -	SCALE: 5			SHEET 37	OF 41 SHEETS	STA. 70+75.00	TO STA. 71+00.00	ILLINOIS FED. AID PROJECT