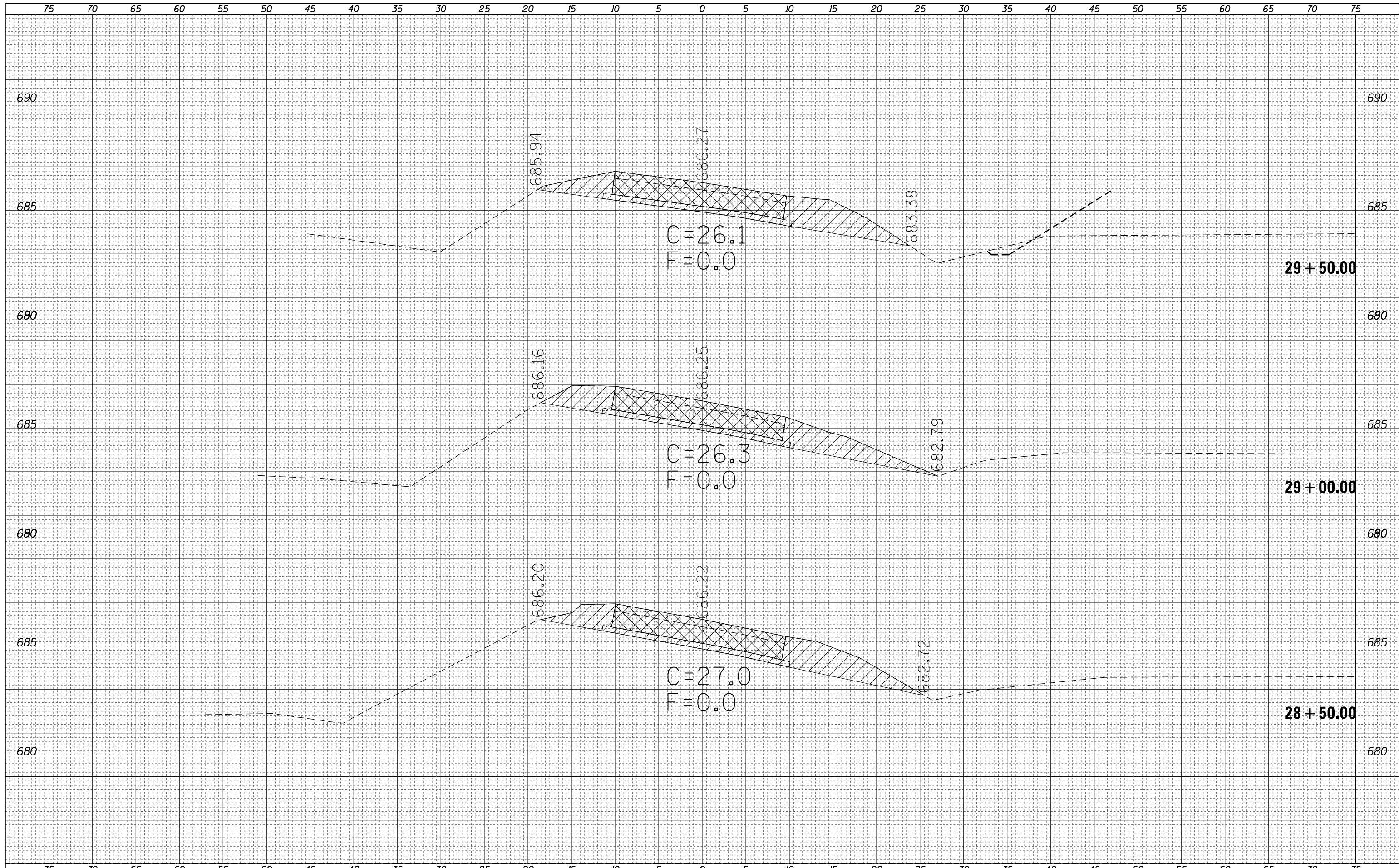


DATE	
BY	
FINAL SURVEY	SURVEYED
NOTE BOOK	PLOTTED
NO.	TEMPLATE
	AREAS
	CHECKED

DATE	
BY	
ORIGINAL SURVEY	SURVEYED
NOTE BOOK	PLOTTED
NO.	TEMPLATE
	AREAS
	CHECKED



FILE NAME =
 c:\pw_work\pwidot\steffenmk\d0158776\0774423-ssc-shit-ExHarrison.dgn
 Default

USER NAME = steffenmk
 DRAWN -
 CHECKED -
 DATE - 5/7/2014

DESIGNED -
 DRAWN -
 CHECKED -
 DATE -

REVISED -
 REVISED -
 REVISED -
 REVISED -

**STATE OF ILLINOIS
 DEPARTMENT OF TRANSPORTATION**

**CROSS SECTIONS
 EX. E. HARRISON**
 SCALE: 5 SHEET 20 OF 26 SHEETS STA. TO STA.

F.A.P. RTE.	SECTION	COUNTY	TOTAL SHEETS	SHEET NO.
91	5N	Coles	271	233
CONTRACT NO. 74423				
ILLINOIS FED. AID PROJECT				