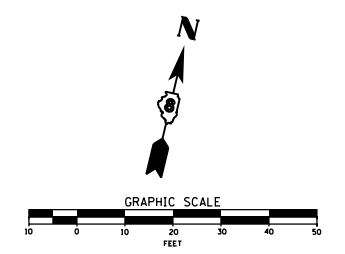
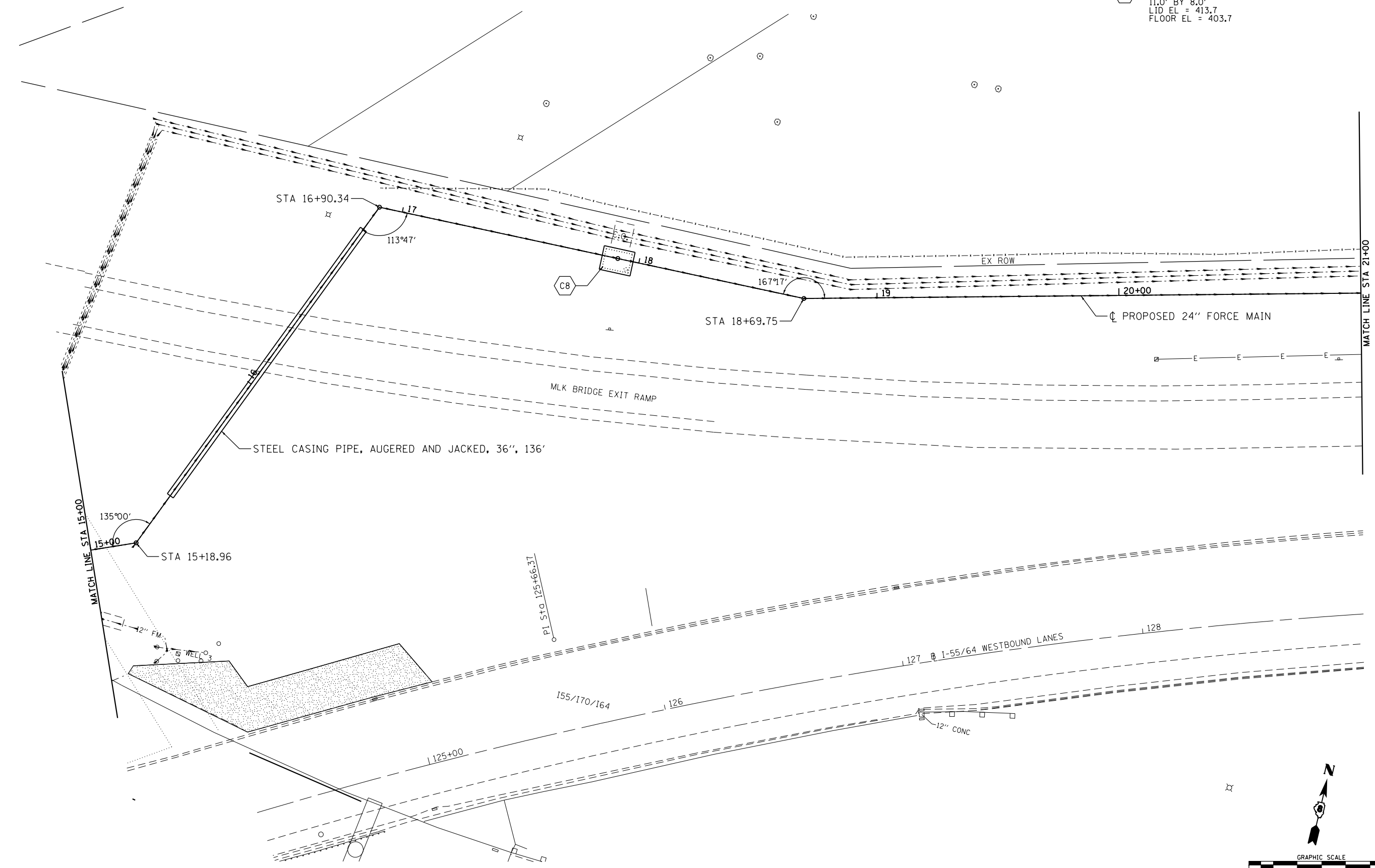


NOTE:
ALL CONSTRUCTION ACTIVITIES SHALL BE LOCATED
OUTSIDE OF THE PAVED SHOULDERS OF F.A.I. 64

C8— STA 17+91.1 FORCEMAIN VAULT
11.0' BY 8.0'
LID EL = 413.7
FLOOR EL = 403.7



FILE NAME = G:\115\110223\Work_Drwn_3_M0_Ave_P12\AC000_Sheets\0876699-ah-1-11-14.dwg

KLINGNER & ASSOCIATES, P.C.
Engineers • Architects • Surveyors

USER NAME = seb	DESIGNED - SEB	REVISED -
	DRAWN - SEB	REVISED -
PLOT SCALE = 40.0000' / in.	CHECKED -	REVISED -
PLOT DATE = 8/23/2014	DATE -	REVISED -

**STATE OF ILLINOIS
DEPARTMENT OF TRANSPORTATION**

**FORCE MAIN PLAN AND PROFILE
MISSOURI AVENUE DEEP WELL FACILITY**

SCALE: 1"=20' SHEET 4 OF 12 SHEETS STA. 15+00 TO STA. 21+00

F.A.I. RTE.	SECTION	COUNTY	TOTAL SHEETS	SHEET NO.
64	82-4T-1	ST. CLAIR	185	30
CONTRACT NO. 76C99				
ILLINOIS FED. AID PROJECT				