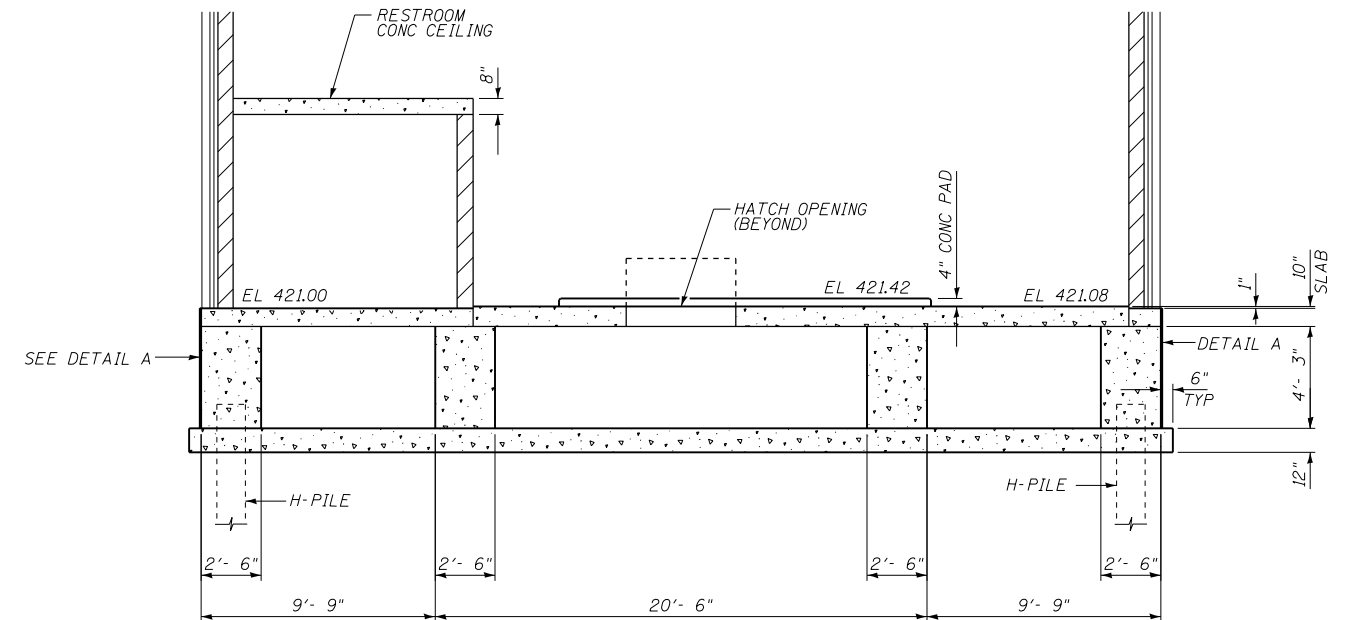
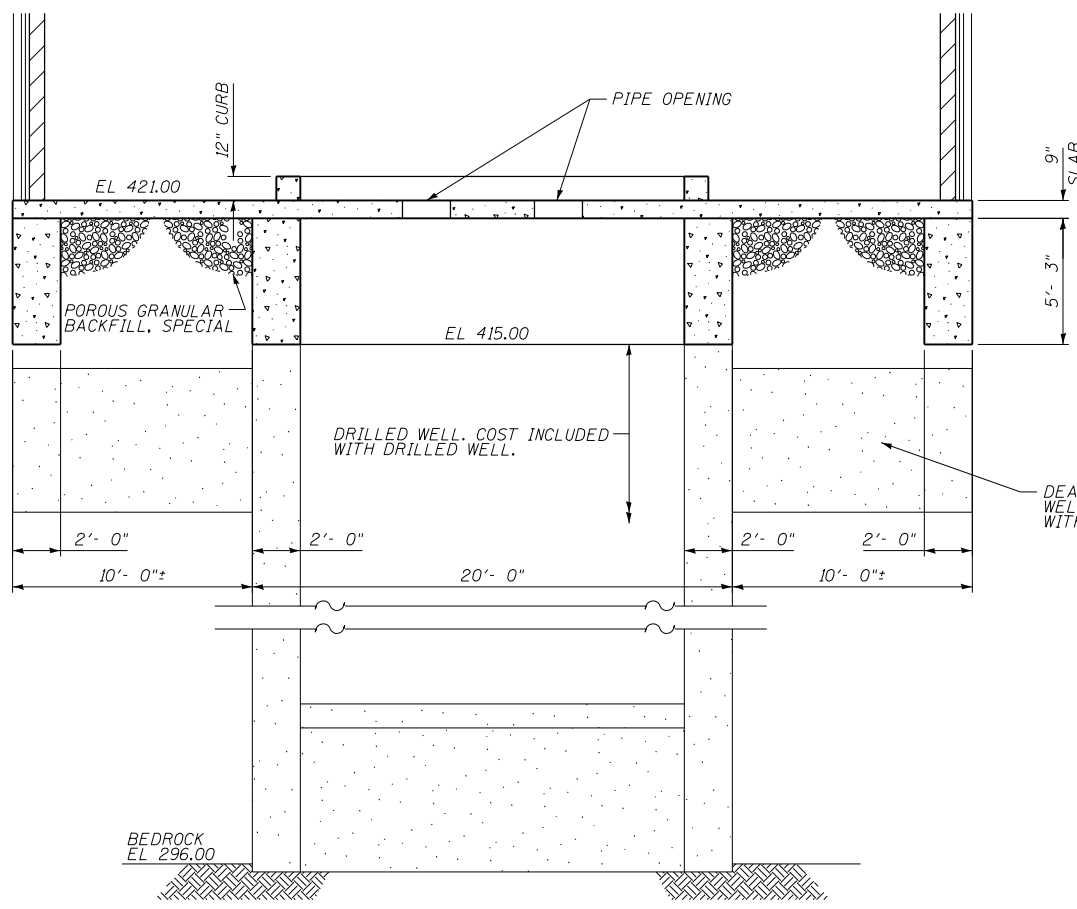


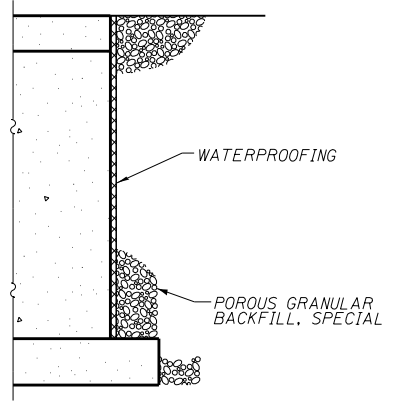
1 SECTION
S103 SCALE: 1/4"=1'-0"



2 SECTION
S103 SCALE: 1/4"=1'-0"



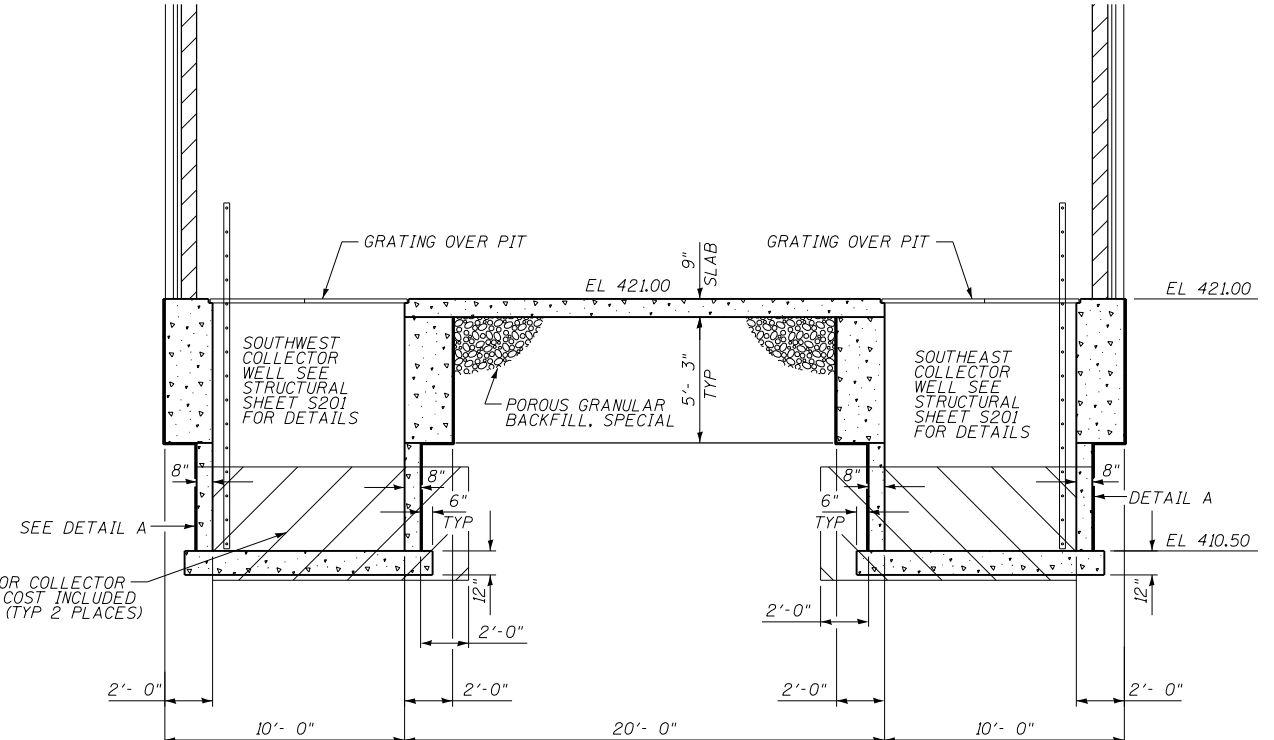
3 SECTION
S103 SCALE: 1/4"=1'-0"



DETAIL A
SCALE: N.T.S.

NOTE:
WATERPROOF AS PER SECTION 503
OF THE STANDARD SPECIFICATIONS.
COST INCLUDED WITH CONCRETE
STRUCTURES.

DEADMAN REMOVAL FOR COLLECTOR
WELL CONSTRUCTION. COST INCLUDED
WITH DRILLED WELL. (TYP 2 PLACES)



4 SECTION
S103 SCALE: 1/4"=1'-0"

FILE NAME = G:\115\115110223\Work_Drwn_3 MO Ave_Riz2ACADD Streets_Grade Beam_Plan.dgn

KLINGNER & ASSOCIATES, P.C.
Engineers • Architects • Surveyors

USER NAME = seb	DESIGNED - RJP	REVISED -
PLOT SCALE = 25.00007' / in.	DRAWN - BGJ	REVISED -
PLOT DATE = 8/23/2014	CHECKED - ADL	REVISED -
	DATE - 8/22/2014	REVISED -

**STATE OF ILLINOIS
DEPARTMENT OF TRANSPORTATION**

**WELL HOUSE BLDG - FOUNDATION DETAILS
MISSOURI AVENUE DEEP WELL FACILITY**

SCALE: SHEET OF SHEETS STA. TO STA.

F.A.I. RTE. 64	SECTION 82-4T-1	COUNTY ST. CLAIR	TOTAL SHEETS 185	SHEET NO. 81
CONTRACT NO. 76C99				
ILLINOIS FED. AID PROJECT				

S103