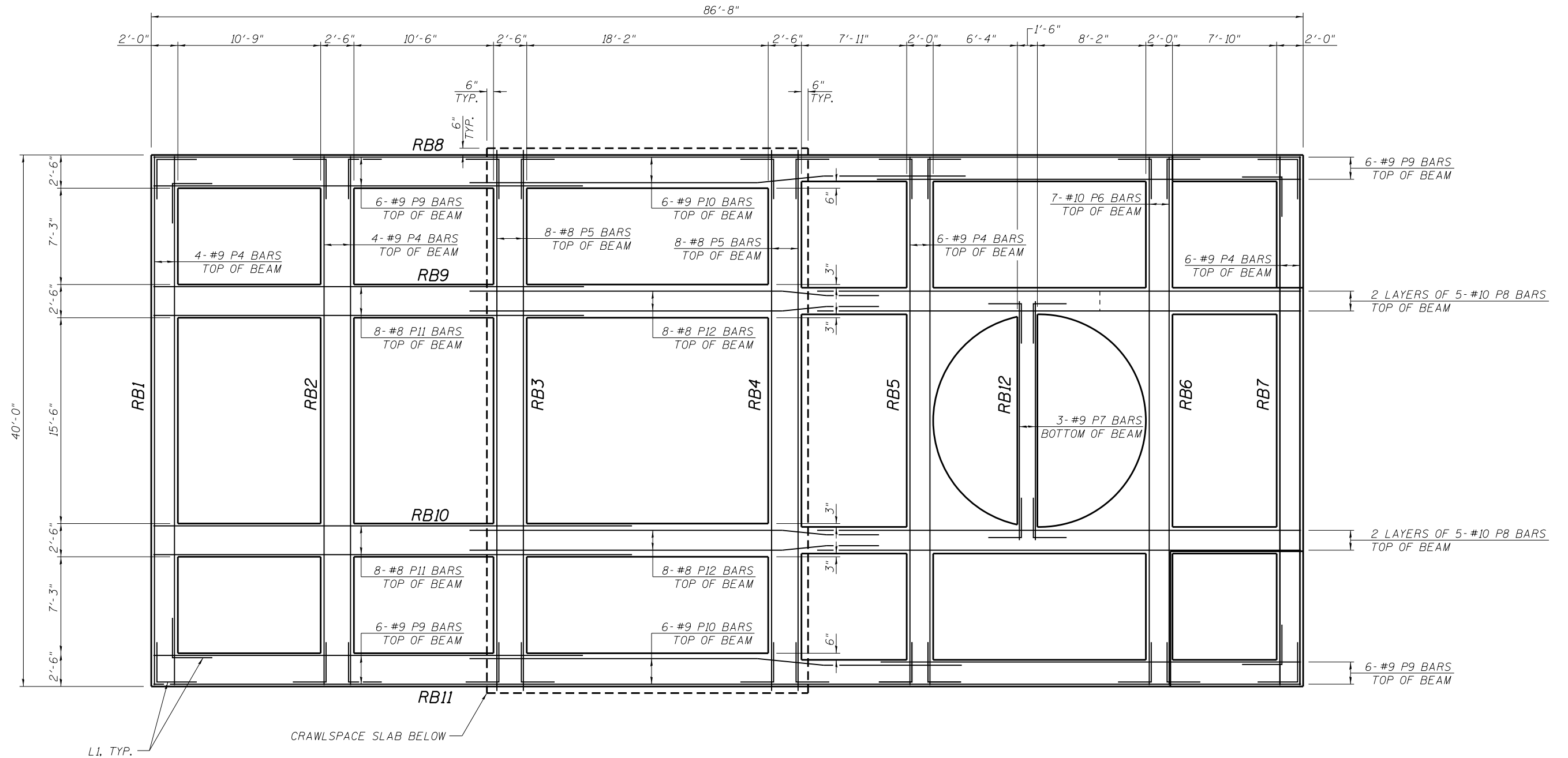


MINIMUM BAR LAP

- #5 bar = 2'-2"
- #6 bar = 2'-7"
- #7 bar = 3'-5"
- #8 bar = 4'-6"
- #9 bar = 5'-9"
- #10 bar = 7'-3"



GRADE BEAM TOP PLAN

FILE NAME = G:\115\110223\Work_Drwn_3_MO_Ave_P12\ACDD_Strengths_Grade_Beam_Plan.dgn

USER NAME = seb	DESIGNED - RJP	REVISED -
PLOT SCALE = 25.0007' / in.	DRAWN - ADL	REVISED -
PLOT DATE = 8/23/2014	CHECKED - RJP	REVISED -
	DATE - ADL	REVISED -