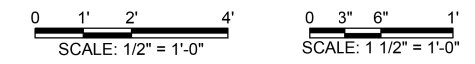
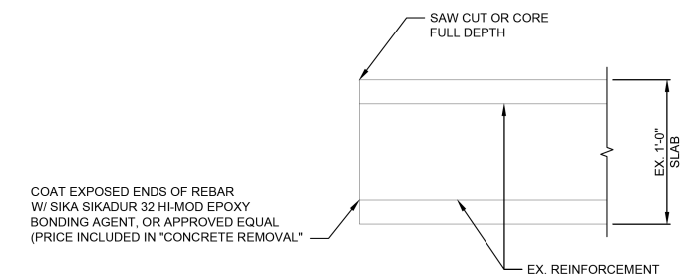
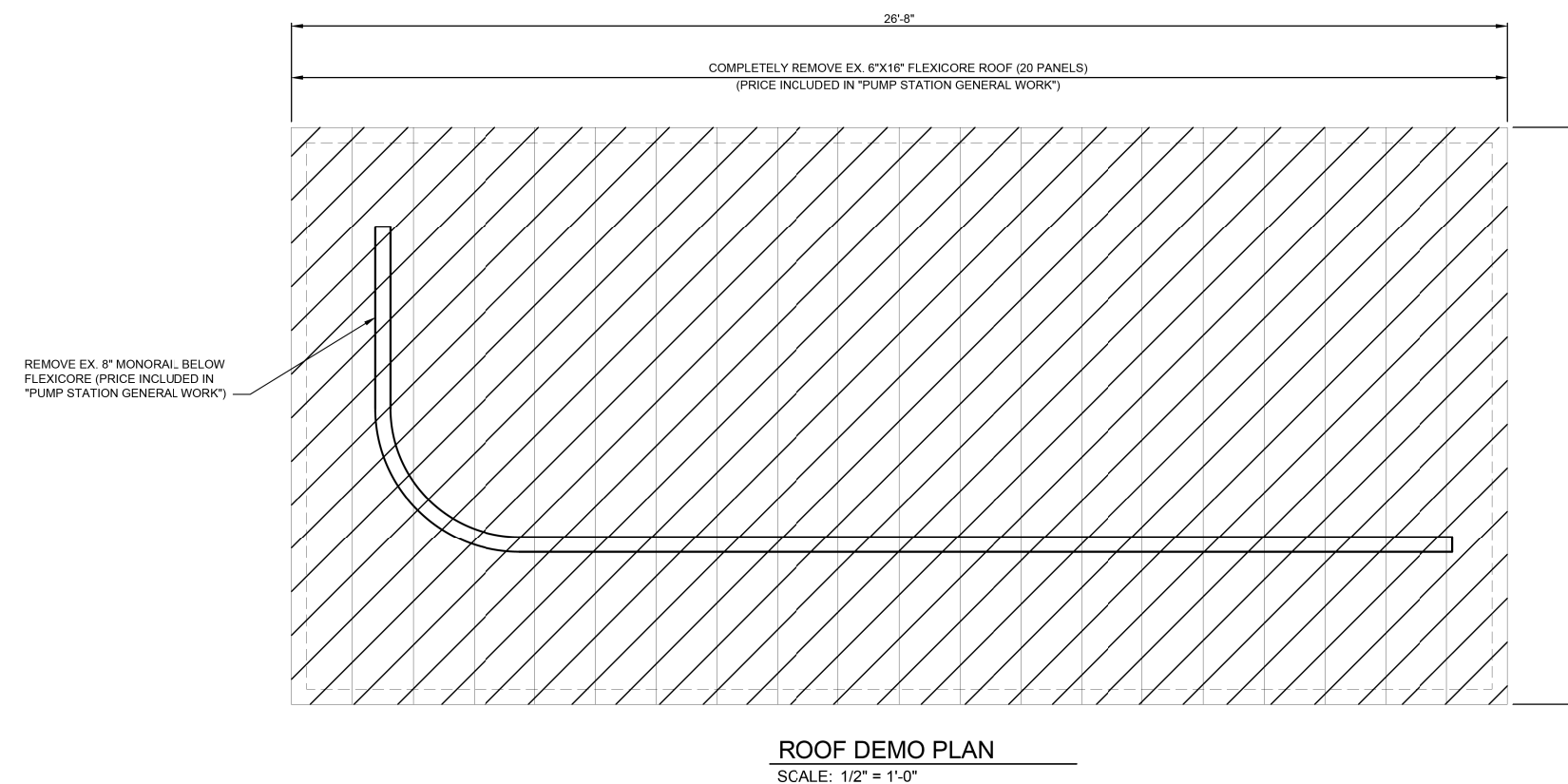
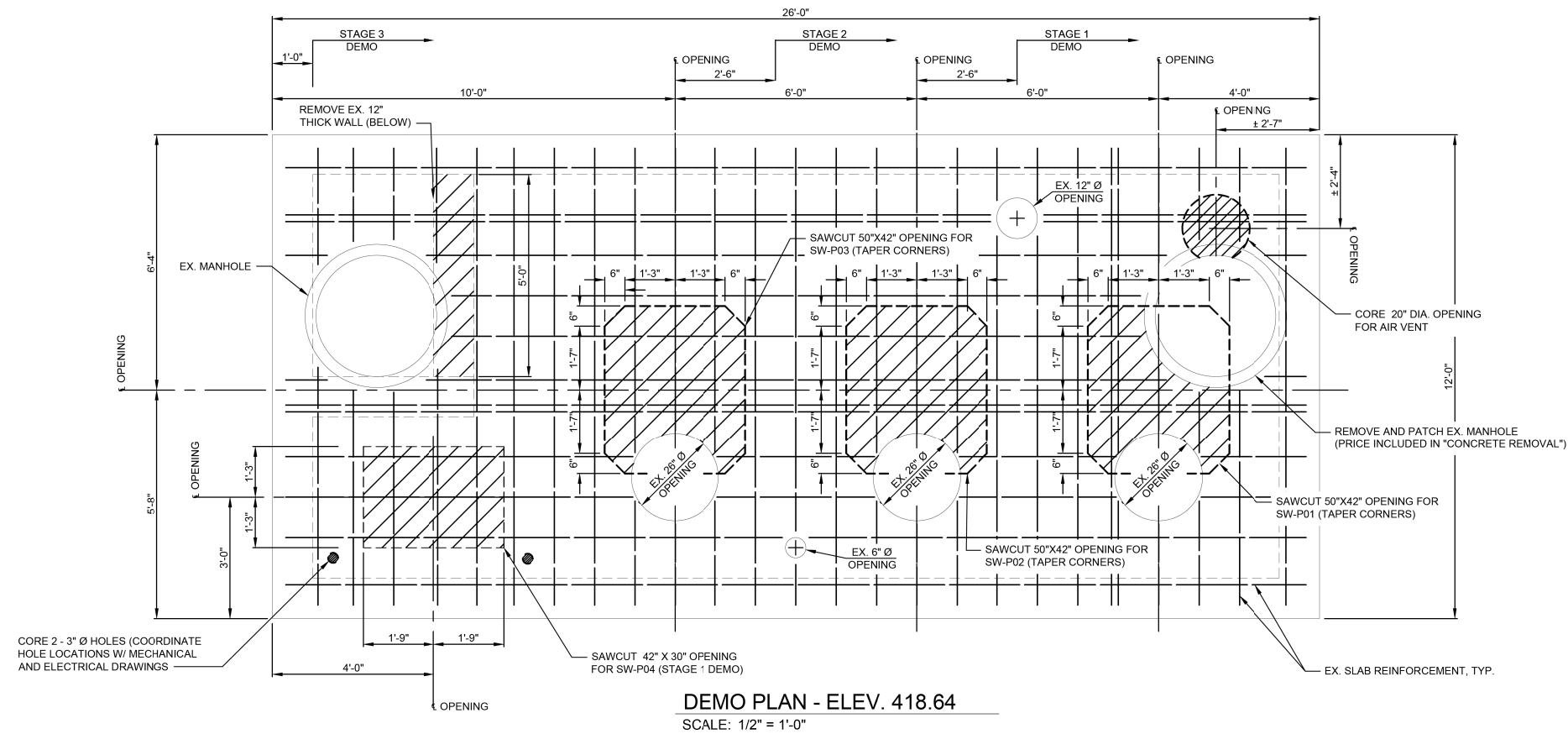


- NOTES:
- 1) NO SALVAGE
 - 2) COORDINATE ALL PIPE OPENINGS WITH ALL PIPING AND PUMPING EQUIPMENT PROVIDED



FILE NAME = G:\115\110223\Work_Drwn_3_M0_Ave_P12\CADD_Sheets\0876099-ht-KL.A_Sur-5.dgn

KLINGNER & ASSOCIATES, P.C.
Engineers • Architects • Surveyors

USER NAME = bgj	DESIGNED - ADL	REVISED -
DRAWN - AMS	REVISED -	
PLOT SCALE = 40.0000' / in.	CHECKED -	REVISED -
PLOT DATE = 8/23/2014	DATE -	REVISED -

**STATE OF ILLINOIS
DEPARTMENT OF TRANSPORTATION**

**EXISTING PUMP STATION BUILDING - DEMO PLANS
MISSOURI AVENUE DEEP WELL FACILITY**

SCALE: AS NOTED SHEET 2 OF 2 SHEETS STA. TO STA.

F.A.I. RTE. 64	SECTION 82-4T-1	COUNTY ST. CLAIR	TOTAL SHEETS 185	SHEET NO. 121
CONTRACT NO. 76C99				
ILLINOIS FED. AID PROJECT				

S502