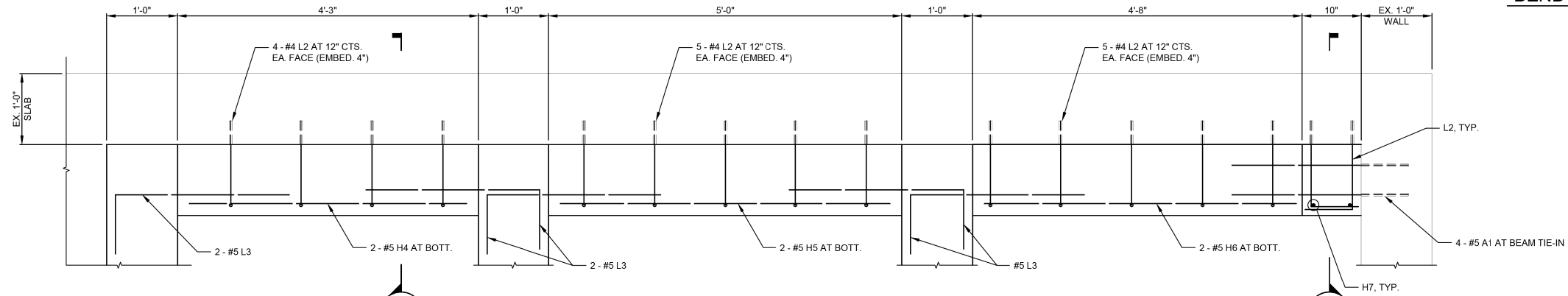
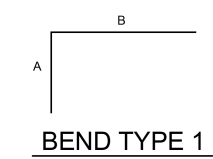
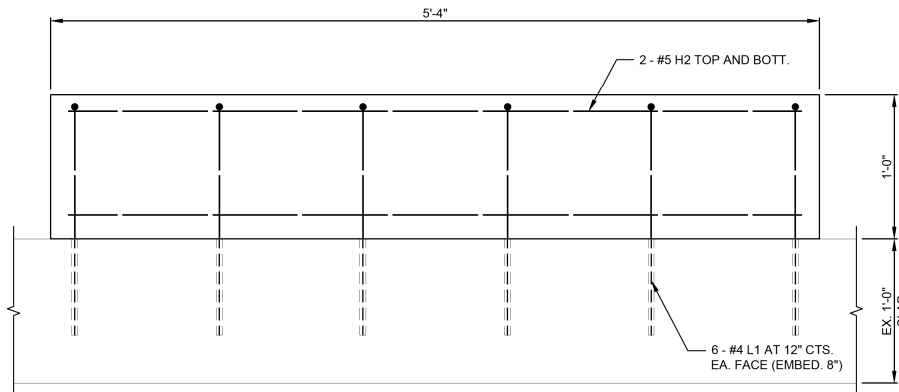


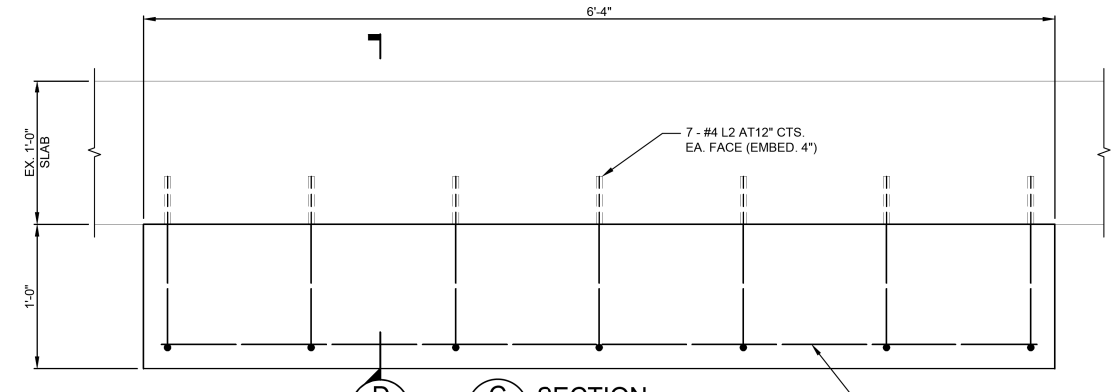
1 DETAIL
S701 SCALE: 1 1/2"=1'-0"



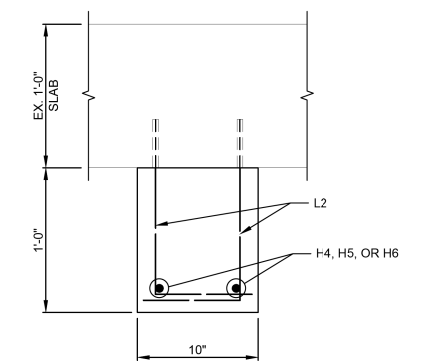
2 DETAIL
S701 SCALE: 1 1/2"=1'-0"



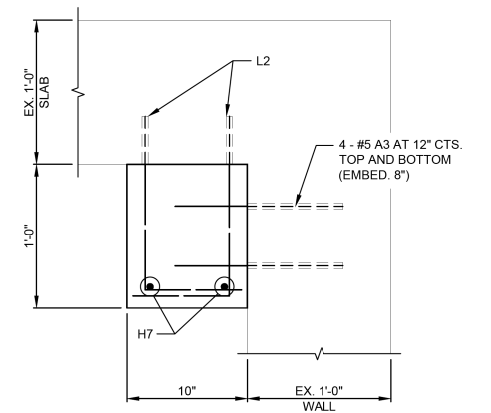
A SECTION
S701 SCALE: 1 1/2"=1'-0"



C SECTION
S701 SCALE: 1 1/2"=1'-0"

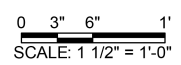


B SECTION
S701 SCALE: 1 1/2"=1'-0"



D SECTION
S701 SCALE: 1 1/2"=1'-0"

REBAR SCHEDULE							
BAR MARK	NO.	SIZE	LENGTH	BEND TYPE	WEIGHT (LBS)	A	B
A1	230	#5	2'-6"		630		
A2	24	#5	2'-0"		60		
A3	8	#5	1'-2"		10		
A4	36	#4	2'-0"		48		
A5	6	#4	1'-2"		5		
A6	20	#4	0'-10"		11		
A7	3	#4	0'-8"		1		
A8	46	#5	1'-4"		64		
A9	2	#4	3'-0"		4		
H1	58	#5	9'-9"		590		
H2	4	#5	5'-1"		21		
H3	12	#5	3'-5"		43		
H4	4	#5	4'-0"		17		
H5	4	#5	4'-9"		20		
H6	4	#5	4'-6"		19		
H7	2	#5	6'-1"		13		
H8	10	#4	0'-10"		6		
H9	40	#5	2'-0"		83		
H10	10	#5	3'-10"		40		
H11	6	#5	6'-5"		40		
H12	4	#5	6'-10"		28		
L1	87	#4	2'-4"	1	136	0'-10"	1'-6"
L2	70	#4	1'-10"	1	66	0'-8"	1'-2"
L3	20	#5	3'-4"	1	69	0'-10"	2'-6"
V1	72	#5	4'-9"		337		
TOTAL					2360		



- *NOTE:
- REBAR SHALL BE EPOXY GROUTED INTO EX. CONC. WITH HILTI HIT-HY 150MAX-SD, OR APPROVED EQUAL. *PRICE INCLUDED IN "CONCRETE STRUCTURES"
 - EXISTING CONCRETE SURFACE IN CONTACT WITH NEW CONCRETE SHALL BE CLEANED AND COATED WITH EPOXY BONDING AGENT, PRIOR TO CONCRETE INSTALLATION. *PRICE INCLUDED IN "CONCRETE STRUCTURES"

FILE NAME = G:\115\115023\Work\Drawn\3 MO Ave P12\ACADD Sheets\DB76699-struct-KL.A_S701.dwg

KLINGNER & ASSOCIATES, P.C.
Engineers • Architects • Surveyors

USER NAME = seb
PLOT SCALE = 48.0000' / in.
PLOT DATE = 8/23/2014

DESIGNED - ADL
DRAWN - AMS
CHECKED -
DATE -

REVISED -
REVISED -
REVISED -
REVISED -

**STATE OF ILLINOIS
DEPARTMENT OF TRANSPORTATION**

**EXISTING PUMP STATION BUILDING - STRUCTURAL DETAILS
MISSOURI AVENUE DEEP WELL FACILITY**
SCALE: AS NOTED SHEET 1 OF 5 SHEETS STA. TO STA.

F.A.I. RTE.	SECTION	COUNTY	TOTAL SHEETS	SHEET NO.
64	82-4T-1	ST. CLAIR	185	126
CONTRACT NO. 76C99				
ILLINOIS FED. AID PROJECT				

S701