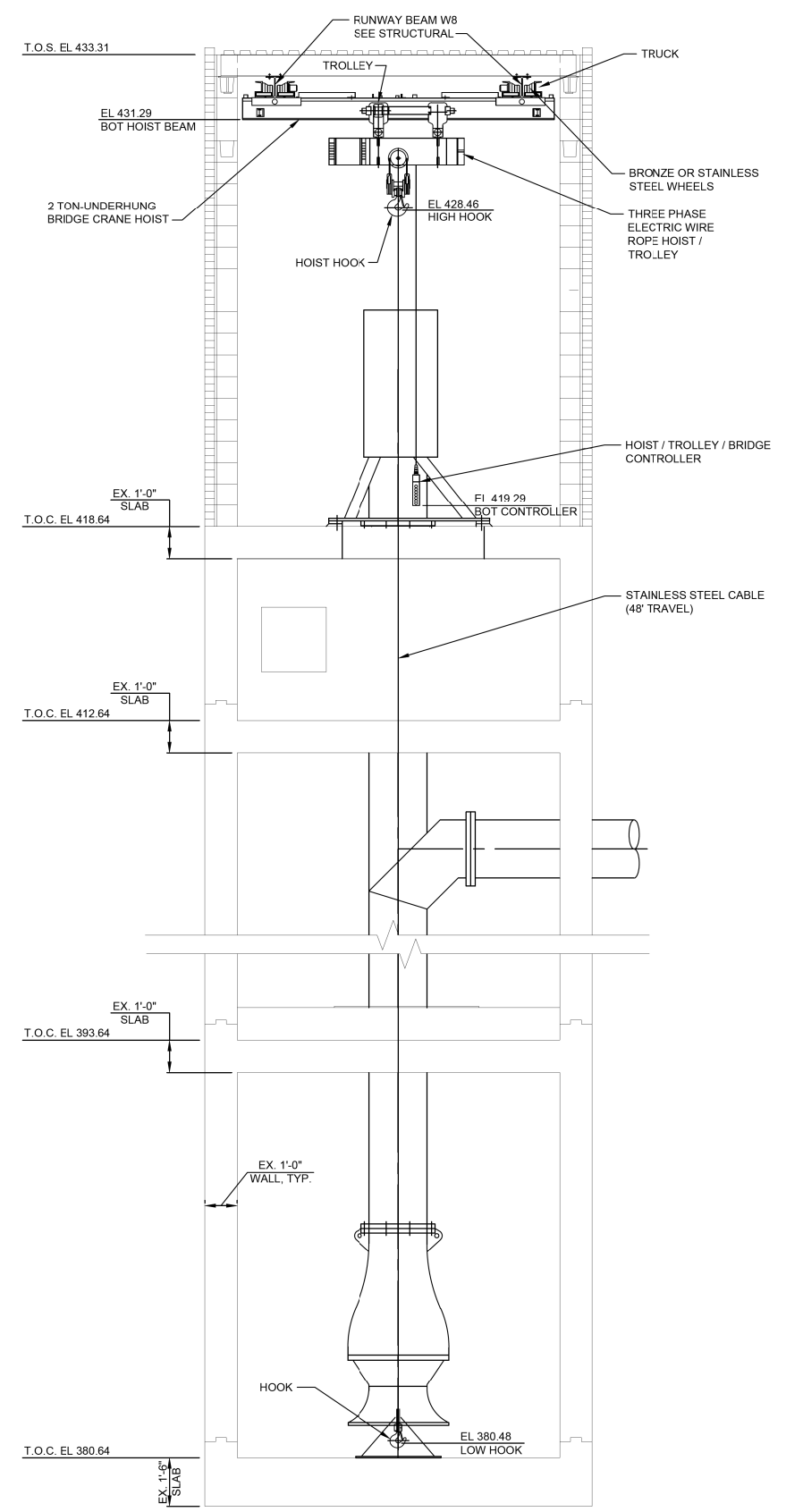


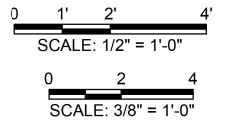
BRIDGE CRANE SUPPORT FRAMING PLAN
SCALE: 1/2" = 1'-0"

EXISTING PUMP STATION BUILDING BRIDGE CRANE:

1. 2 TON, UNDER HUNG BRIDGE CRANE WITH ELECTRIC MOTORIZED END TRUCKS, ELECTRIC MOTORIZED WIRE ROPE (CABLE) HOIST/TROLLEY, STAINLESS STEEL CABLE AND HOOK, BRIDGE AND HOIST CONTROLLER, ELECTRICAL PANELS, AND ACCESSORIES.
2. THE CRANE, TROLLEY AND HOIST SYSTEM IN THE EXISTING PUMP STATION BUILDING SHALL BE AN EXPLOSION-PROOF AND SPARK RESISTANT SYSTEM MEETING THE CLASS I, DIVISION II, GROUP D CRITERIA FOR ATMOSPHERE THAT HAVE THE POTENTIAL OF CONTAINING GASOLINE.



A SECTION
M601 SCALE: 3/8" = 1'-0"



FILE NAME = G:\115\1150223\Work_Drwnr_3_M0_Ave_P12\ACADD_Sheets\DR76699-ah-t-M601_Mech.dgn

KLINGNER & ASSOCIATES, P.C.
Engineers • Architects • Surveyors

USER NAME = seb	DESIGNED - JJN	REVISED -
	DRAWN - BGJ	REVISED -
PLOT SCALE = 40.0000' / in.	CHECKED -	REVISED -
PLOT DATE = 8/23/2014	DATE -	REVISED -

**STATE OF ILLINOIS
DEPARTMENT OF TRANSPORTATION**

EXIST PUMP STATION BUILDING - BRIDGE CRANE & HOIST
MISSOURI AVENUE DEEP WELL FACILITY
SCALE: AS NOTED SHEET 1 OF 1 SHEETS STA. TO STA.

F.A.I. RTE. 64	SECTION 82-4T-1	COUNTY ST. CLAIR	TOTAL SHEETS 185	SHEET NO. 156
CONTRACT NO. 76C99				
ILLINOIS FED. AID PROJECT				

M601