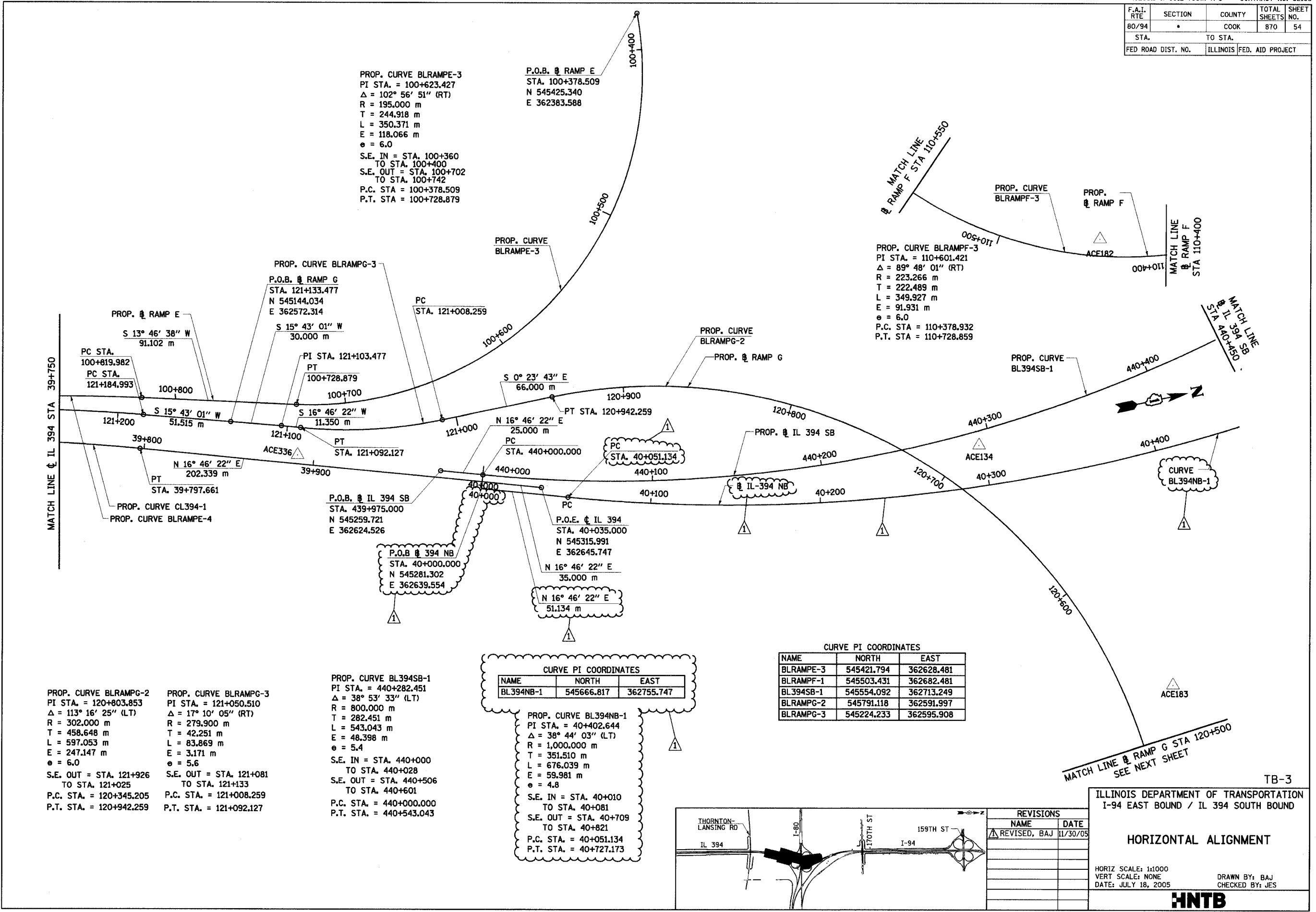


F.A.I. RTE	SECTION	COUNTY	TOTAL SHEETS	SHEET NO.
80/94	*	COOK	870	54
STA.		TO STA.		
FED ROAD DIST. NO.		ILLINOIS FED. AID PROJECT		



PROP. CURVE BLRAMPE-3
 PI STA. = 100+623.427
 $\Delta = 102^\circ 56' 51''$ (RT)
 R = 195.000 m
 T = 244.918 m
 L = 350.371 m
 E = 118.066 m
 $e = 6.0$
 S.E. IN = STA. 100+360
 TO STA. 100+400
 S.E. OUT = STA. 100+702
 TO STA. 100+742
 P.C. STA = 100+378.509
 P.T. STA = 100+728.879

P.O.B. @ RAMP E
 STA. 100+378.509
 N 545425.340
 E 362383.588

PROP. CURVE BLRAMPF-3
 PI STA. = 110+601.421
 $\Delta = 89^\circ 48' 01''$ (RT)
 R = 223.266 m
 T = 222.489 m
 L = 349.927 m
 E = 91.931 m
 $e = 6.0$
 P.C. STA = 110+378.932
 P.T. STA = 110+728.859

PROP. CURVE CL394-1
 PROP. CURVE BLRAMPE-4
 PC STA. 100+819.982
 PC STA. 121+184.993
 S $13^\circ 46' 38''$ W
 91.102 m
 S $15^\circ 43' 01''$ W
 51.515 m
 N $16^\circ 46' 22''$ E
 202.339 m
 PT STA. 39+797.661

PROP. CURVE BLRAMPG-3
 P.O.B. @ RAMP G
 STA. 121+133.477
 N 545144.034
 E 362572.314
 S $15^\circ 43' 01''$ W
 30.000 m
 PI STA. 121+103.477
 PT STA. 100+728.879

PROP. CURVE BLRAMPE-3

PROP. CURVE BLRAMPG-2
 PROP. @ RAMP G

PROP. CURVE BL394SB-1

PROP. CURVE BLRAMPG-2
 PI STA. = 120+803.853
 $\Delta = 113^\circ 16' 25''$ (LT)
 R = 302.000 m
 T = 458.648 m
 L = 597.053 m
 E = 247.147 m
 $e = 6.0$
 S.E. OUT = STA. 121+926
 TO STA. 121+025
 P.C. STA. = 120+345.205
 P.T. STA. = 120+942.259

PROP. CURVE BLRAMPG-3
 PI STA. = 121+050.510
 $\Delta = 17^\circ 10' 05''$ (RT)
 R = 279.900 m
 T = 42.251 m
 L = 83.869 m
 E = 3.171 m
 $e = 5.6$
 S.E. OUT = STA. 121+081
 TO STA. 121+133
 P.C. STA. = 121+008.259
 P.T. STA. = 121+092.127

PROP. CURVE BL394SB-1
 PI STA. = 440+282.451
 $\Delta = 38^\circ 53' 33''$ (LT)
 R = 800.000 m
 T = 282.451 m
 L = 543.043 m
 E = 48.398 m
 $e = 5.4$
 S.E. IN = STA. 440+000
 TO STA. 440+028
 S.E. OUT = STA. 440+506
 TO STA. 440+601
 P.C. STA. = 440+000.000
 P.T. STA. = 440+543.043

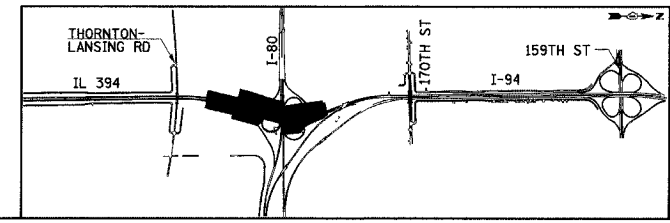
CURVE PI COORDINATES

NAME	NORTH	EAST
BL394NB-1	545666.817	362755.747

PROP. CURVE BL394NB-1
 PI STA. = 40+402.644
 $\Delta = 38^\circ 44' 03''$ (LT)
 R = 1,000.000 m
 T = 351.510 m
 L = 676.039 m
 E = 59.981 m
 $e = 4.8$
 S.E. IN = STA. 40+010
 TO STA. 40+081
 S.E. OUT = STA. 40+709
 TO STA. 40+821
 P.C. STA. = 40+051.134
 P.T. STA. = 40+727.173

CURVE PI COORDINATES

NAME	NORTH	EAST
BLRAMPE-3	545421.794	362628.481
BLRAMPF-1	545503.431	362682.481
BL394SB-1	545554.092	362713.249
BLRAMPG-2	545791.118	362591.997
BLRAMPG-3	545224.233	362595.908



REVISIONS

NAME	DATE
REVISOR, BAJ	11/30/05

ILLINOIS DEPARTMENT OF TRANSPORTATION
 I-94 EAST BOUND / IL 394 SOUTH BOUND

HORIZONTAL ALIGNMENT

HORIZ SCALE: 1:1000
 VERT SCALE: NONE
 DATE: JULY 18, 2005

DRAWN BY: BAJ
 CHECKED BY: JES

HNTB