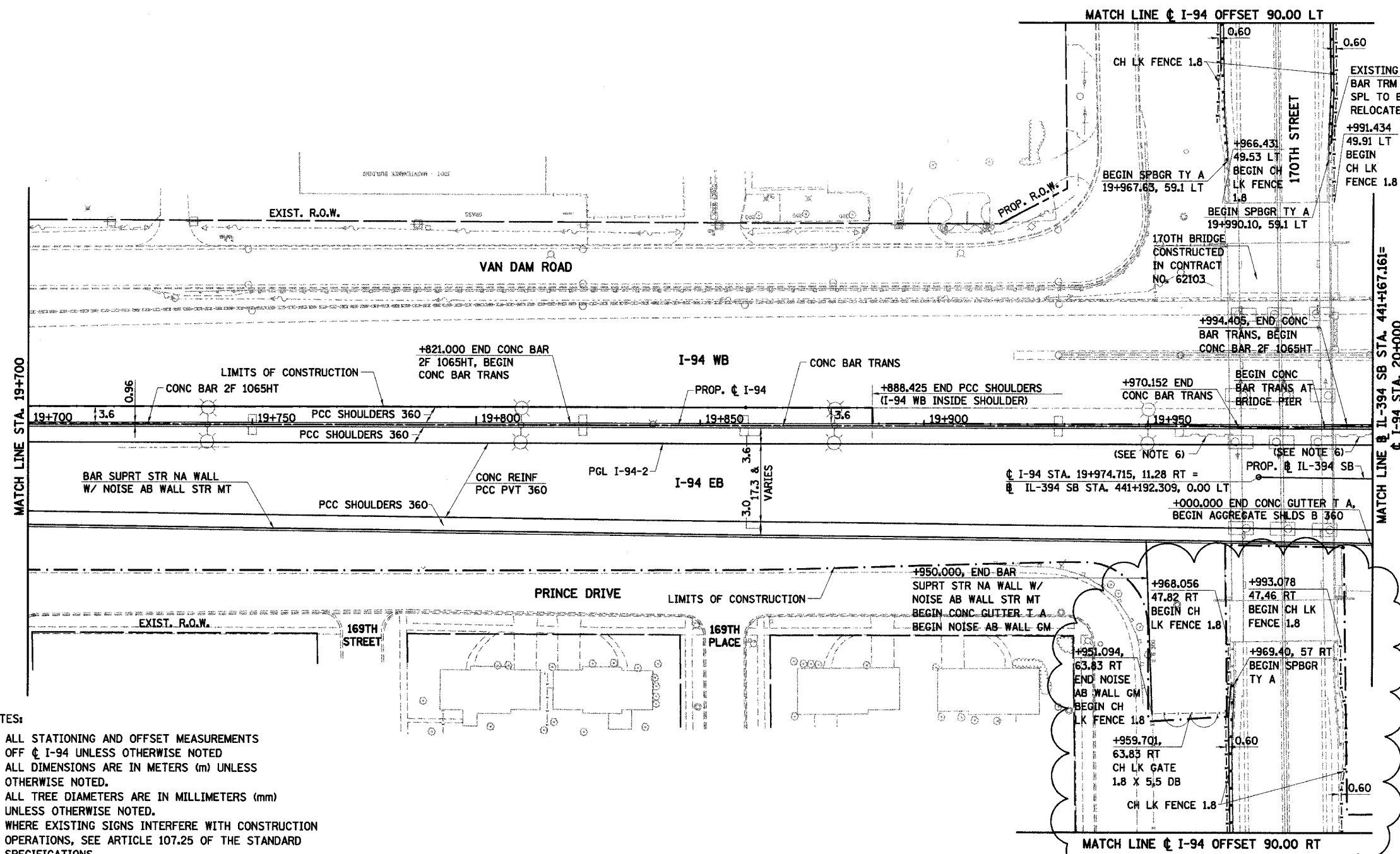


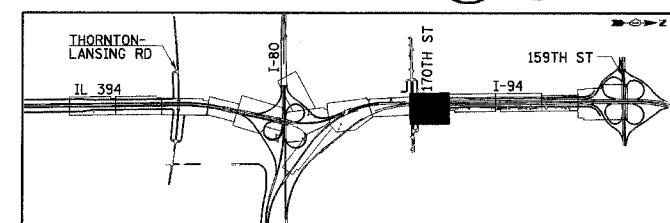
F.A.I. RTE	SECTION	COUNTY	TOTAL SHEETS	SHEET NO.
80/94	*	COOK	870	133
STA. 19+700		TO STA. 20+000		
FED ROAD DIST. NO.		ILLINOIS FED. AID PROJECT		



**NOTES:**

1. ALL STATIONING AND OFFSET MEASUREMENTS OFF  $\phi$  I-94 UNLESS OTHERWISE NOTED
2. ALL DIMENSIONS ARE IN METERS (m) UNLESS OTHERWISE NOTED.
3. ALL TREE DIAMETERS ARE IN MILLIMETERS (mm) UNLESS OTHERWISE NOTED.
4. WHERE EXISTING SIGNS INTERFERE WITH CONSTRUCTION OPERATIONS, SEE ARTICLE 107.25 OF THE STANDARD SPECIFICATIONS.
5. SEE CONTRACT 62664 FOR LIGHTING REMOVAL.
6. ADD GEOTECHNICAL FABRIC FOR FRENCH DRAINS ON FRONT FACE OF EXISTING MSE RETAINING WALL. SEE SHEETS 707A & 707B FOR DETAILS.
7. PROPOSED SPBGR TY A TO CONNECT TO EXISTING TRAFFIC BARRIER TERMINAL TYPE 6 ON 170TH STREET BRIDGE. WORK AND MATERIALS INCLUDED IN COST OF SPBGR TY A.

**PROPOSED**



REVISIONS	
NAME	DATE
REVISOR, MAM	11/30/05

ILLINOIS DEPARTMENT OF TRANSPORTATION  
I-94 EAST BOUND / IL 394 SOUTH BOUND

**PROPOSED PLAN  
I-94  
STA. 19+700 TO STA. 20+000**

HORIZ SCALE: 1:500  
VERT SCALE: 1:500  
DATE: JULY 18, 2005  
DRAWN BY: BAJ  
CHECKED BY: JES

