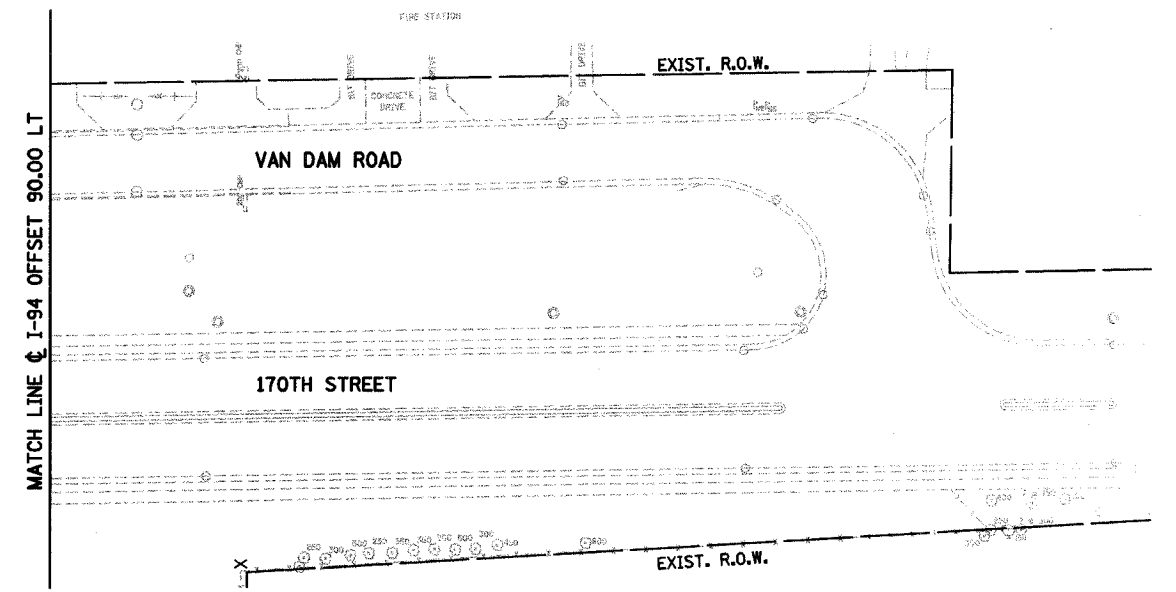
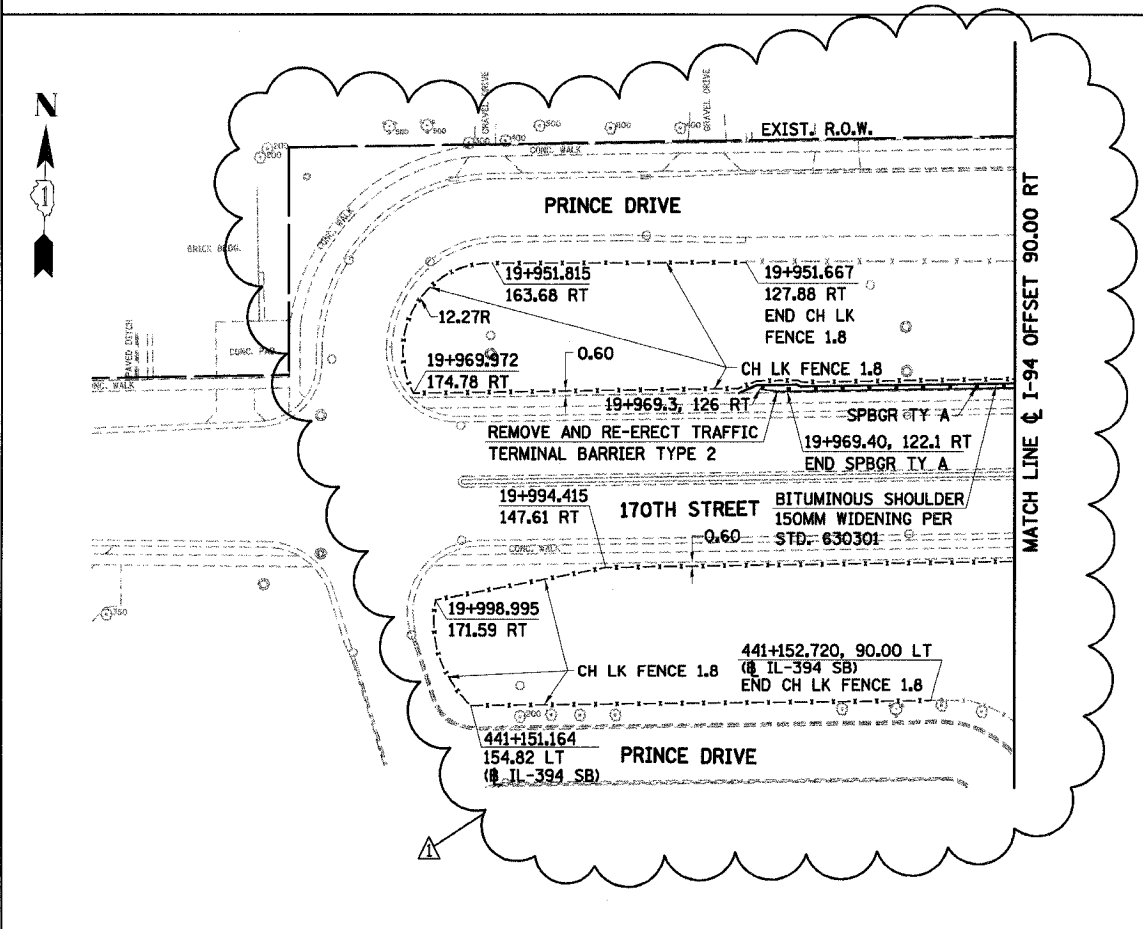


EXISTING

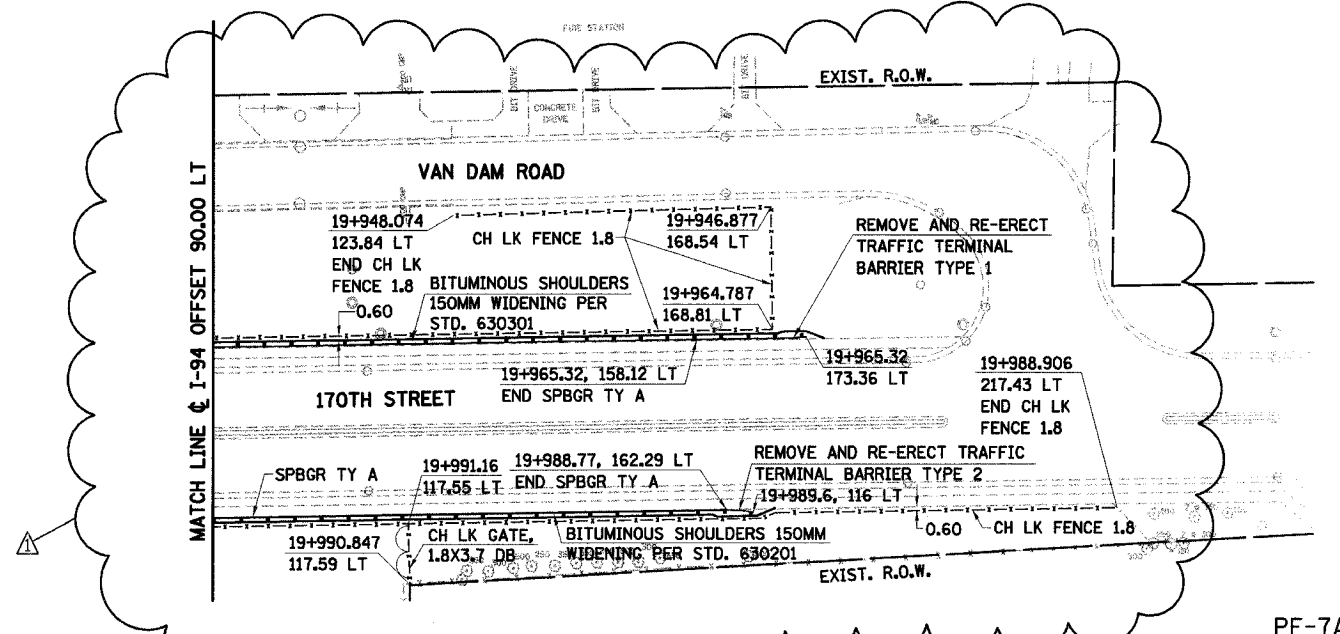


NOTES:

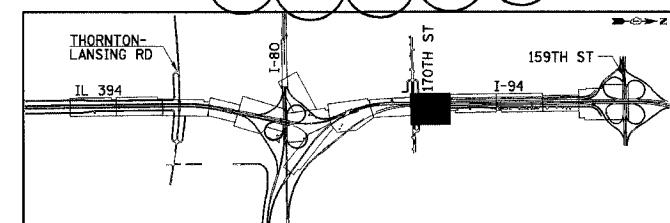
1. ALL STATIONING AND OFFSET MEASUREMENTS OFF ϕ I-94 UNLESS OTHERWISE NOTED
2. ALL DIMENSIONS ARE IN METERS (m) UNLESS OTHERWISE NOTED.
3. ALL TREE DIAMETERS ARE IN MILLIMETERS (mm) UNLESS OTHERWISE NOTED.
4. WHERE EXISTING SIGNS INTERFERE WITH CONSTRUCTION OPERATIONS, SEE ARTICLE 107.25 OF THE STANDARD SPECIFICATIONS.
5. SEE CONTRACT 62664 FOR LIGHTING REMOVAL.



PROPOSED



PF-7A



REVISIONS	
NAME	DATE
REVISOR, MAM	11/30/05

ILLINOIS DEPARTMENT OF TRANSPORTATION
I-94 EAST BOUND / IL 394 SOUTH BOUND

PROPOSED PLAN
I-94/IL-394/170TH STREET
STA. 19+925 TO STA. 20+000 (ϕ I-94)
STA. 441+140 TO 441+167.161 (ϕ IL-394 SB)

HORIZ SCALE: 1:500
VERT SCALE:
DATE: JULY 18, 2005

DRAWN BY: BAJ
CHECKED BY: JES

HNTB