

F.A.I. RTE	SECTION	COUNTY	TOTAL SHEETS NO.	SHEET NO.
80/94		COOK	870	143
STA.		TO STA.		
FED ROAD DIST. NO.		ILLINOIS FED. AID PROJECT		

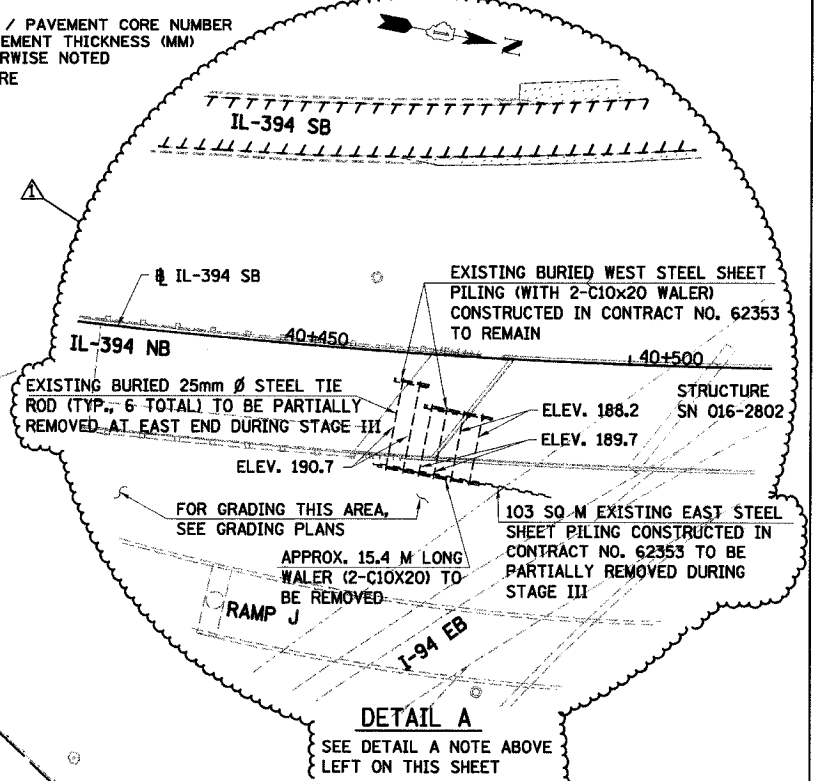
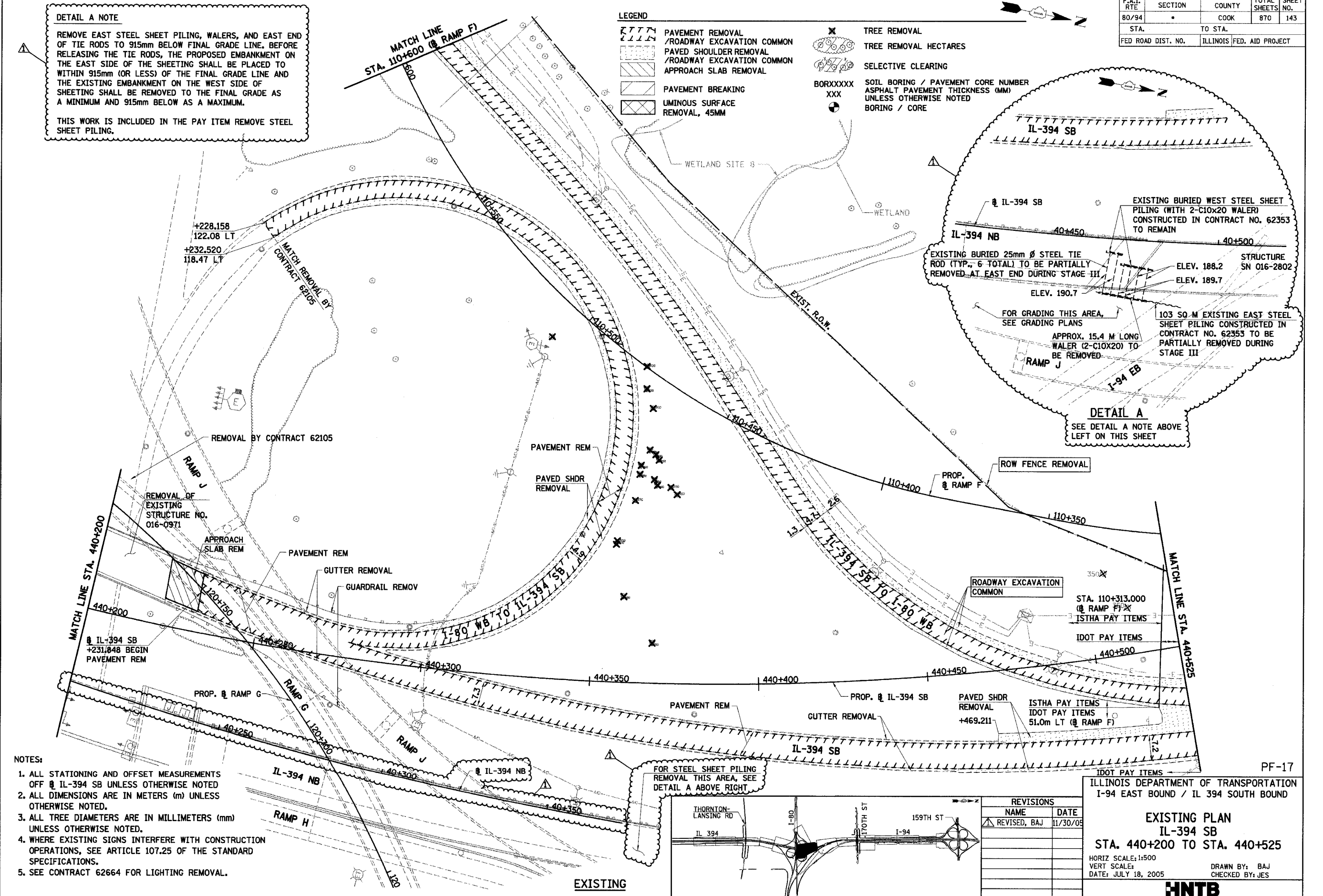
**DETAIL A NOTE**

REMOVE EAST STEEL SHEET PILING, WALERS, AND EAST END OF TIE RODS TO 915mm BELOW FINAL GRADE LINE. BEFORE RELEASING THE TIE RODS, THE PROPOSED EMBANKMENT ON THE EAST SIDE OF THE SHEETING SHALL BE PLACED TO WITHIN 915mm (OR LESS) OF THE FINAL GRADE LINE AND THE EXISTING EMBANKMENT ON THE WEST SIDE OF SHEETING SHALL BE REMOVED TO THE FINAL GRADE AS A MINIMUM AND 915mm BELOW AS A MAXIMUM.

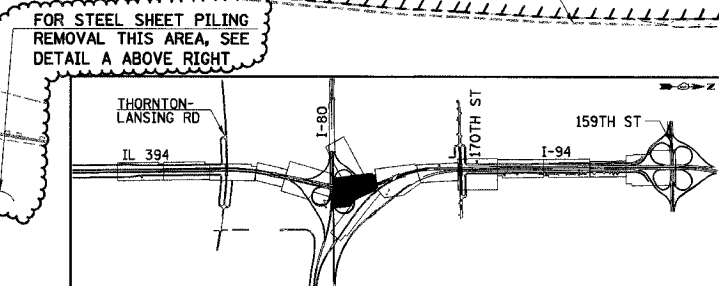
THIS WORK IS INCLUDED IN THE PAY ITEM REMOVE STEEL SHEET PILING.

**LEGEND**

- PAVEMENT REMOVAL / ROADWAY EXCAVATION COMMON
- PAVED SHOULDER REMOVAL / ROADWAY EXCAVATION COMMON
- APPROACH SLAB REMOVAL
- PAVEMENT BREAKING
- LUMINOUS SURFACE REMOVAL, 45MM
- TREE REMOVAL
- TREE REMOVAL HECTARES
- SELECTIVE CLEARING
- SOIL BORING / PAVEMENT CORE NUMBER
- ASPHALT PAVEMENT THICKNESS (MM) UNLESS OTHERWISE NOTED
- BORING / CORE



- NOTES:**
1. ALL STATIONING AND OFFSET MEASUREMENTS OFF IL-394 SB UNLESS OTHERWISE NOTED
  2. ALL DIMENSIONS ARE IN METERS (m) UNLESS OTHERWISE NOTED.
  3. ALL TREE DIAMETERS ARE IN MILLIMETERS (mm) UNLESS OTHERWISE NOTED.
  4. WHERE EXISTING SIGNS INTERFERE WITH CONSTRUCTION OPERATIONS, SEE ARTICLE 107.25 OF THE STANDARD SPECIFICATIONS.
  5. SEE CONTRACT 62664 FOR LIGHTING REMOVAL.



**REVISIONS**

NAME	DATE
REVISED, BAJ	11/30/05

ILLINOIS DEPARTMENT OF TRANSPORTATION  
I-94 EAST BOUND / IL 394 SOUTH BOUND

**EXISTING PLAN**  
IL-394 SB  
STA. 440+200 TO STA. 440+525

HORIZ SCALE: 1:500  
VERT SCALE: 1:500  
DATE: JULY 18, 2005

DRAWN BY: BAJ  
CHECKED BY: JES

**HNTB**