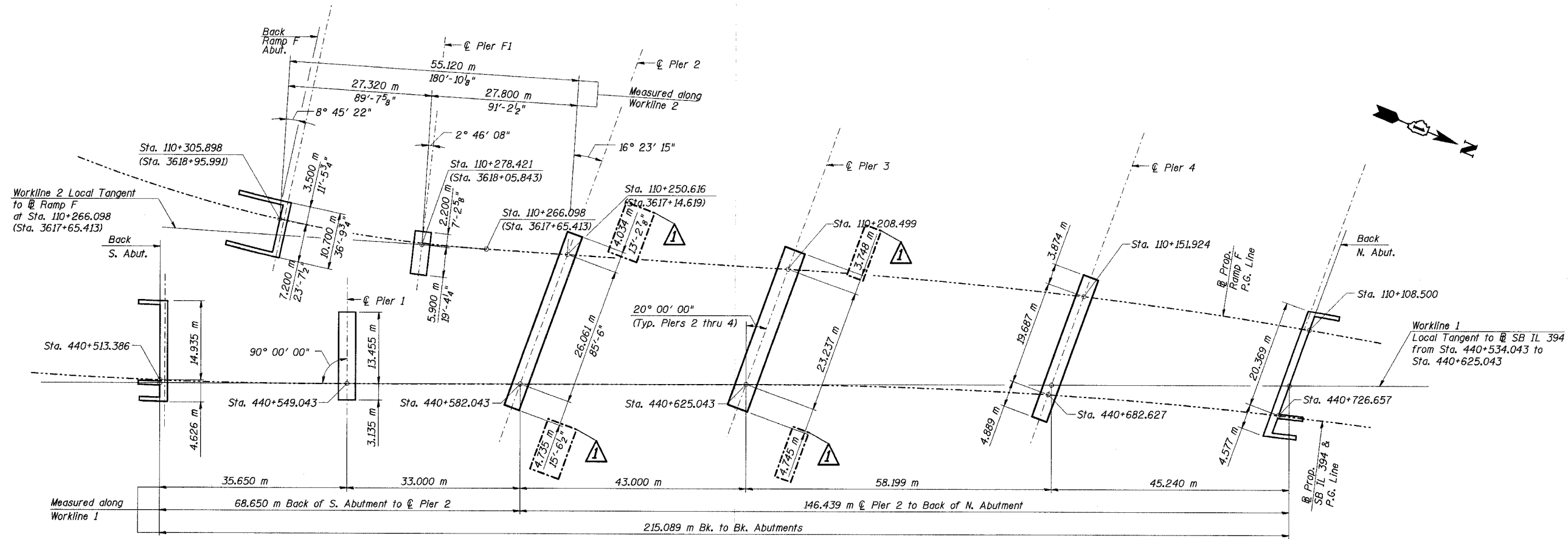


STATE OF ILLINOIS  
DEPARTMENT OF TRANSPORTATION

|                       |          |                   |              |           |             |
|-----------------------|----------|-------------------|--------------|-----------|-------------|
| ROUTE NO.             | SECTION  | COUNTY            | TOTAL SHEETS | SHEET NO. | SHEET NO. 4 |
| F. A. I. 80/94        | .        | COOK              | 870          | 518       | 91 SHEETS   |
| FED. ROAD DIST. NO. 1 | ILLINOIS | FED. AID PROJECT- |              |           |             |

(02031 & 0312-708W) R-3 CONTRACT NO. 62108



FOOTING LAYOUT

L:\s1112  
 I:\34562\CADD\B\SN\_2800\cd\ACTR\_19\_2800\1190014\_2800.dgn  
 28-JUL-2005 14:35

|          |     |
|----------|-----|
| DESIGNED | DBT |
| CHECKED  | BDL |
| DRAWN    | LK  |
| CHECKED  | DBT |

- Notes:
1. All dimensions are in millimeters (mm) except as noted.
  2. Stations in parantheses are in English units.

ILLINOIS DEPARTMENT OF TRANSPORTATION  
I-94 EAST BOUND / IL 394 SOUTH BOUND  
**FOOTING LAYOUT**  
SB IL ROUTE 394 / RAMP F OVER THORN CREEK  
F.A.P. 332 SECTION (02031 & 0312-708W) R-3  
COOK COUNTY  
STA. 440+704.350 STRUCTURE NO. 016-2800/2845  
DATE JUL 18, 2005  
SCALE ---



Revised 11/30/2005, PCA