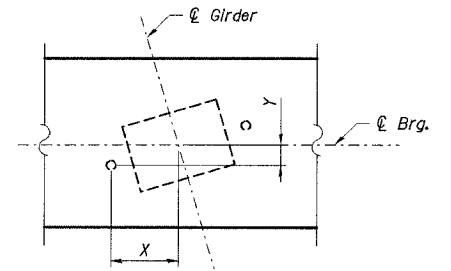
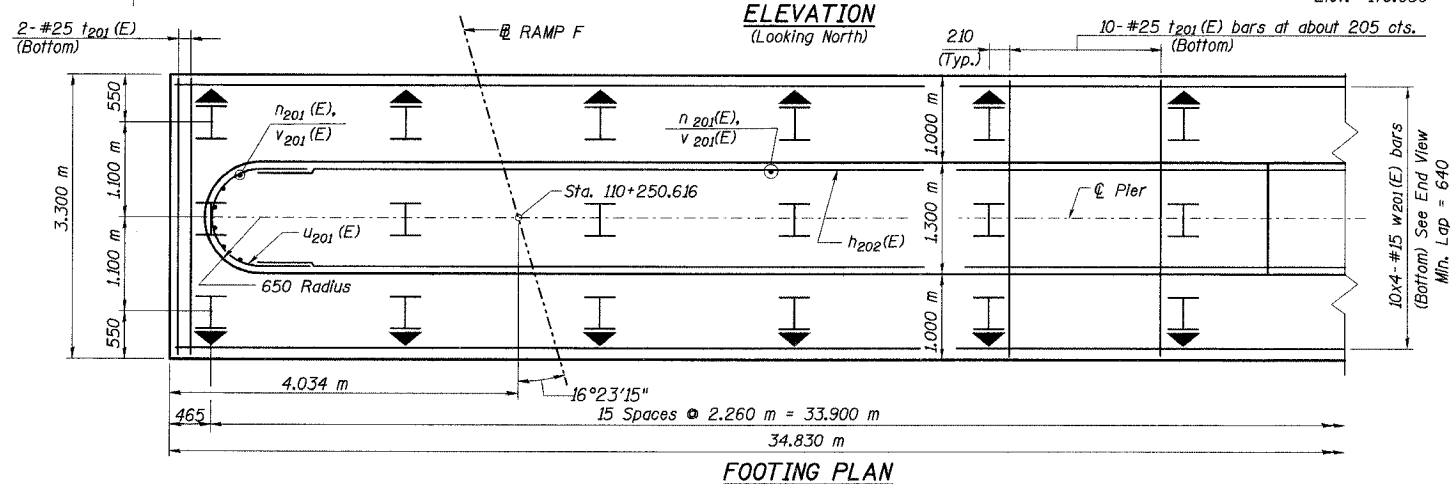
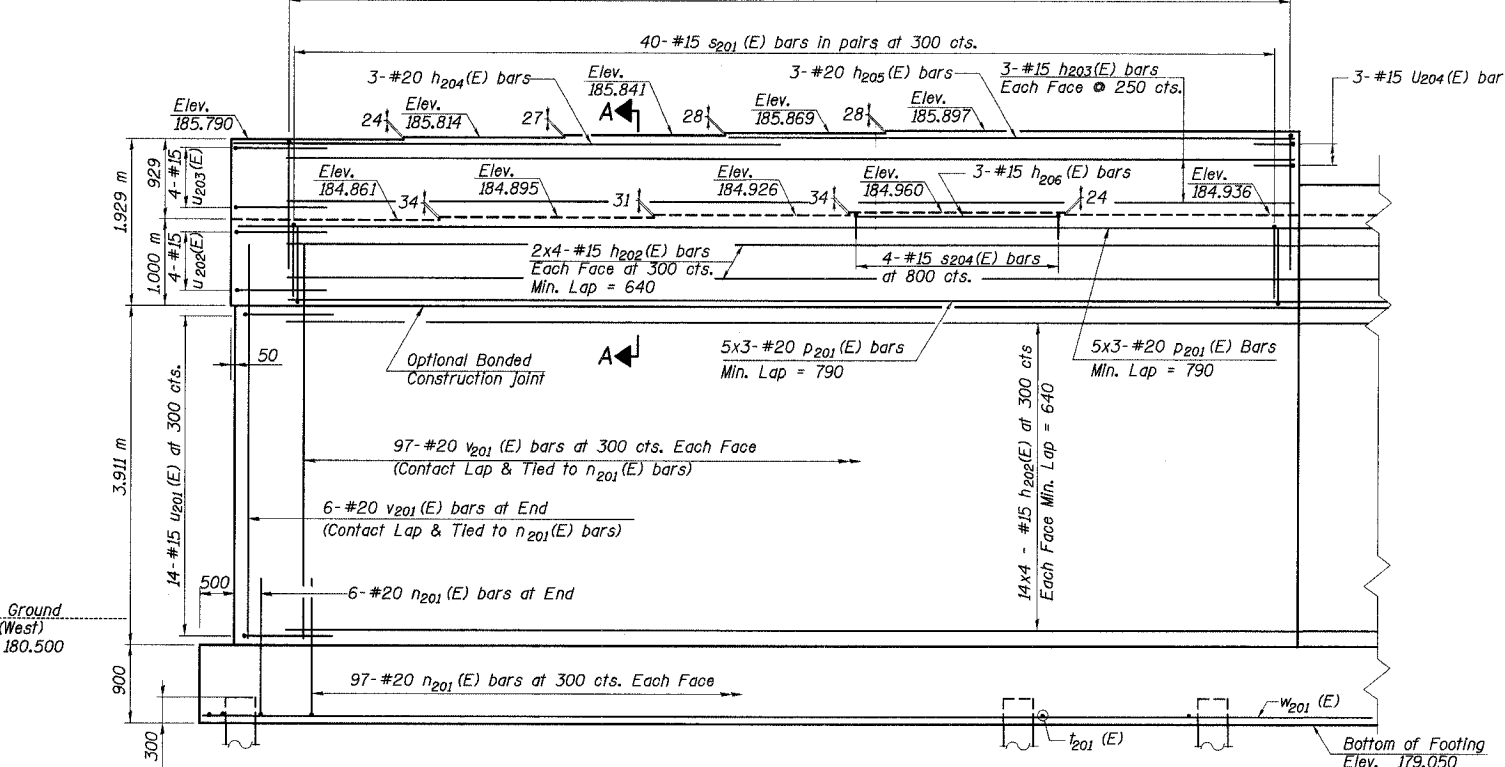
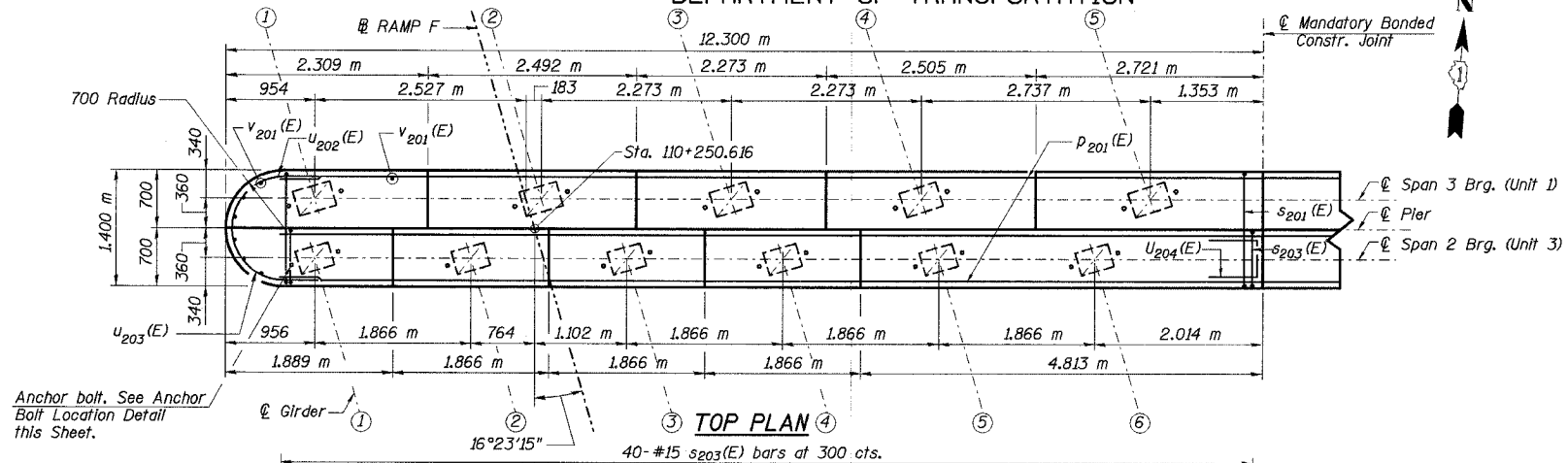


STATE OF ILLINOIS  
DEPARTMENT OF TRANSPORTATION

ROUTE NO.	SECTION	COUNTY	TOTAL SHEETS	SHEET NO.	SHEET NO. 72 91 SHEETS
F. A. I. 80/94		COOK	870	586	
FED. ROAD DIST. NO. 1		ILLINOIS FED. AID PROJECT-		CONTRACT NO. 62106	
(02033.1 & 0312-708W) R-3					



ANCHOR BOLT LOCATION DETAILS

Glr.	Span 2 Brg.		Span 3 Brg.	
	X	Y	X	Y
1	279	82	1	314
2	279	82	2	314
3	279	82	3	312
4	279	82	4	311
5	279	82	5	311
6	279	82	-	-

- Notes:
1. Work this sheet with No. 73, & 74 of 91.
  2. Space reinforcement in cap to miss anchor bolts.
  3. Four steps monolithically with cap.
  4. All dimensions are in millimeters (mm) except as noted.
  5. Reinforcement Bars designated (E) shall be epoxy coated.
  6. For Bill of Materials and bar bending diagrams, See Sheet No. 74 of 91 Sheets.
  7. Bars Indicated thus "14x3-#15 cts." Indicates 14 lines of bars with 3 lengths per line.
  8. For bearing orientation, see Sheet No. 59 of 91.
- Indicates Battered Pile

DESIGNED	DBT/MAS
CHECKED	BDL/PCA
DRAWN	CAB/JRB/PCA
CHECKED	DBT/MAS

L:\k111e\j\34652\CADD\B1\N\_2800\cda\CTR\_19\_2800\pal\9214s\_2800.dgn  
28-NOV-2005 14:36



ILLINOIS DEPARTMENT OF TRANSPORTATION  
I-94 EAST BOUND / IL 394 SOUTH BOUND  
PIER 2 PLAN & ELEVATION (WEST)  
SB IL ROUTE 394 OVER THORN CREEK  
F.A.P. 332 SECTION (02033.1 & 0312-708W) R-3  
COOK COUNTY  
STA. 440+704.350 STRUCTURE NO. 016-2800  
DATE JUL 18, 2005  
SCALE ---