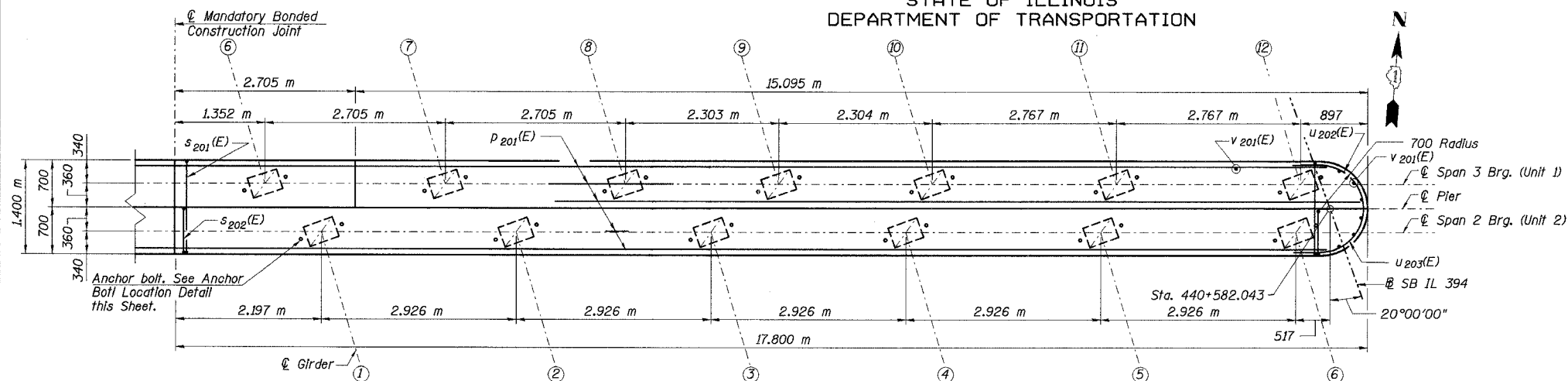
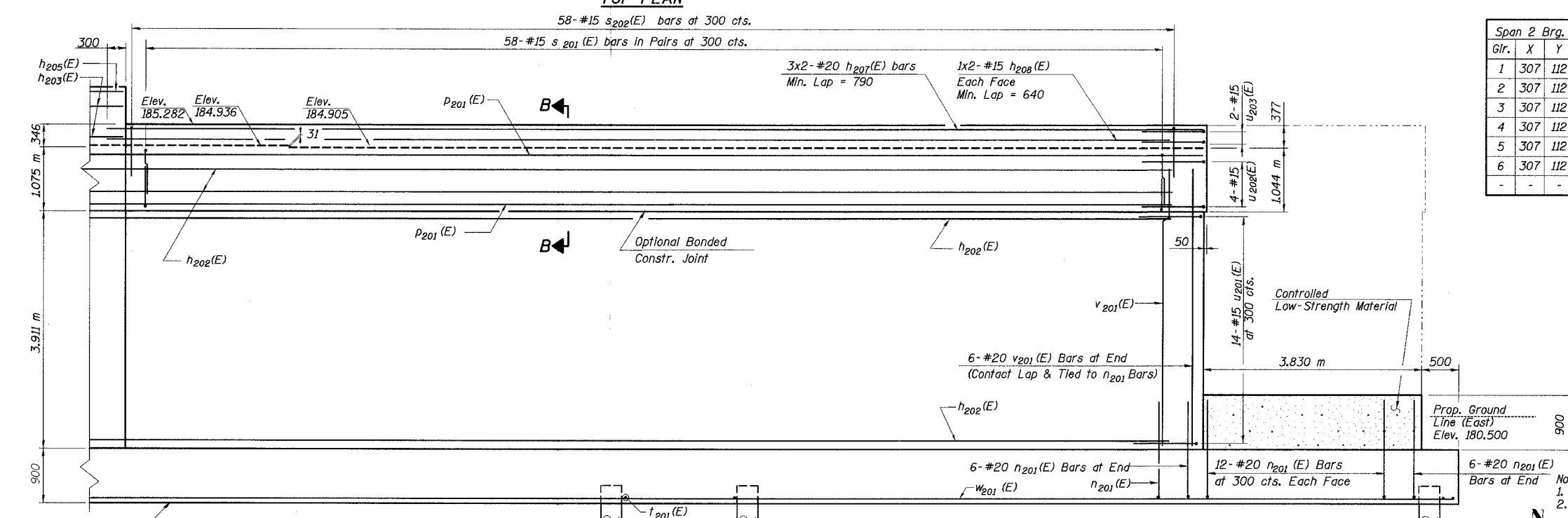
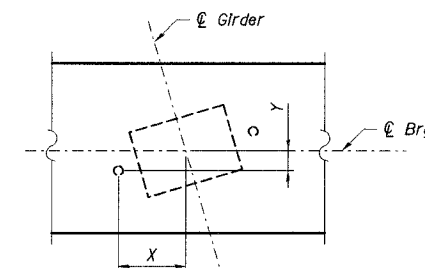


STATE OF ILLINOIS
DEPARTMENT OF TRANSPORTATION

ROUTE NO.	SECTION	COUNTY	TOTAL SHEETS	SHEET NO.	SHEET NO. 73 91 SHEETS
F. A. I. 80/94	-	COOK	870	587	
FED. ROAD DIST. NO. 1		ILLINOIS	FED. AID PROJECT-		CONTRACT NO. 62108
		02033.1 & 0312-708W) R-3			



ANCHOR BOLT LOCATION DETAILS



Span 2 Brg.		Span 3 Brg.	
Glr.	X Y	Glr.	X Y
1	307 112	6	311 102
2	307 112	7	311 102
3	307 112	8	311 102
4	307 112	9	309 107
5	307 112	10	307 112
6	307 112	11	307 112
-	-	12	307 112

Lkai.ta
J:\34562\CA000\B1\N_2800\cda\CTR_19_2800\pal\92224_2800.dgn
28-NOV-2005 14:38

DESIGNED	DBT/MAS
CHECKED	BDL/PCA
DRAWN	CAB/JRB/PCA
CHECKED	DBT/MAS

- Notes:
1. Work this sheet with No. 72, & 74 of 91.
 2. Space reinforcement in cap to miss anchor bolts.
 3. Pour steps monolithically with cap.
 4. All dimensions are in millimeters (mm) except as noted.
 5. Reinforcement Bars designated (E) shall be epoxy coated.
 6. For Bill of Materials and bar bending diagrams, See Sheet No. 74 of 91 Sheets.
 7. Bars indicated thus "14x3-#15 cts." Indicates 14 lines of bars with 3 lengths per line.
 8. For bearing orientation, see Sheet No. 59 of 91.
- Indicates Battered Pile

ILLINOIS DEPARTMENT OF TRANSPORTATION
I-94 EAST BOUND / IL 394 SOUTH BOUND
PIER 2 PLAN & ELEVATION (EAST)
SB IL ROUTE 394 OVER THORN CREEK
F.A.P. 332 SECTION (02033.1 & 0312-708W) R-3
COOK COUNTY
STA. 440+704.350 STRUCTURE NO. 016-2800
DATE JUL 18, 2005
SCALE ---

HNTB

Entire Sheet Revised 11/30/2005, PCA