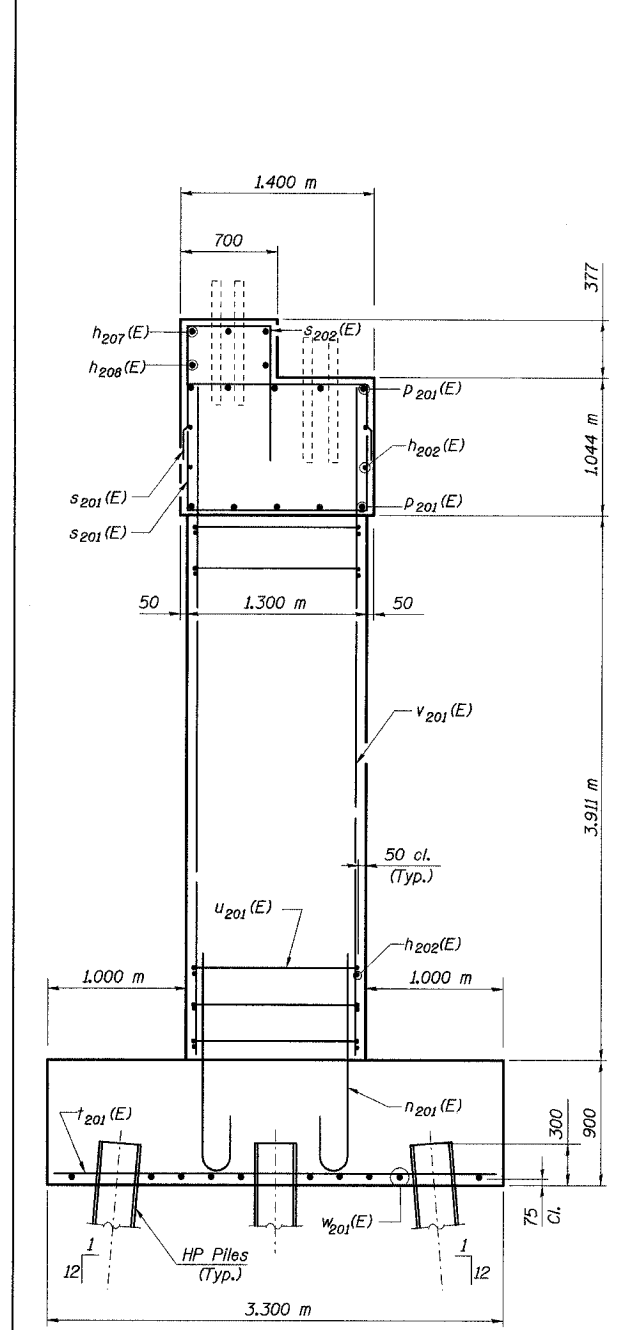


STATE OF ILLINOIS  
DEPARTMENT OF TRANSPORTATION

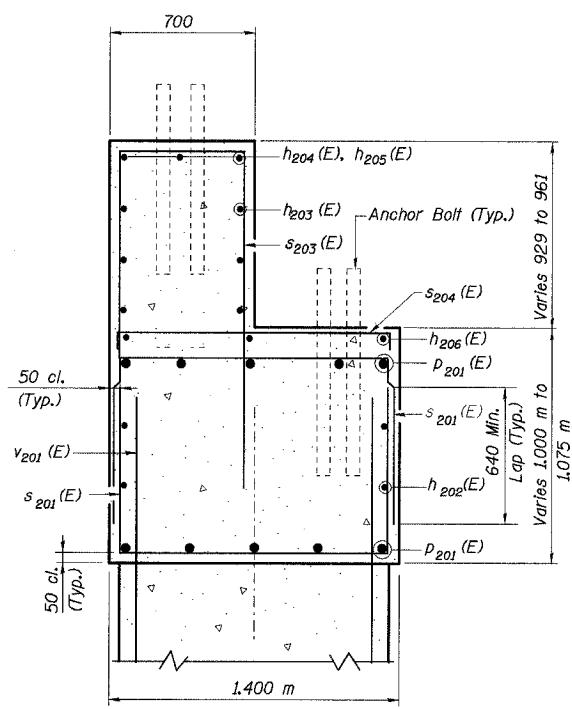
ROUTE NO.	SECTION	COUNTY	TOTAL SHEETS	SHEET NO.	SHEET NO. 74
F. A. I. 80/94	.	COOK	870	588	91 SHEETS
FED. ROAD DIST. NO. 1		ILLINOIS FED. AID PROJECT-		CONTRACT NO. 62108	
(0203.1 & 0312-708W) R-3					



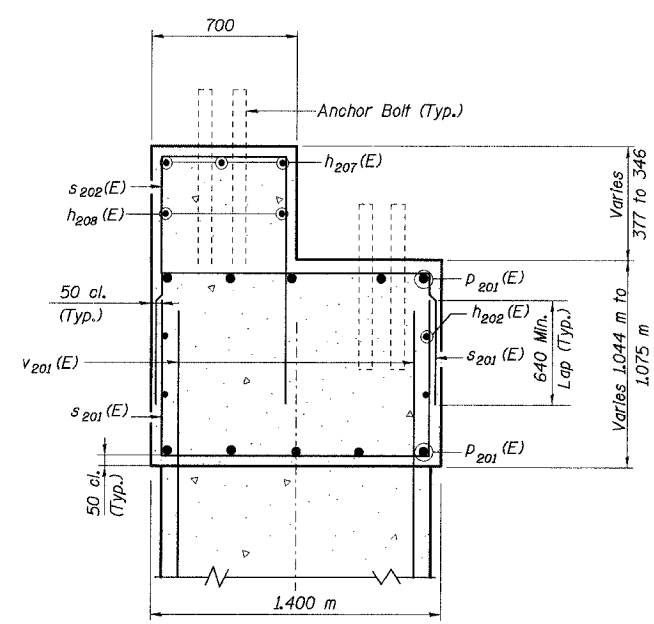
**END VIEW**  
Looking West

**PILE DATA**  
Type: HP 360x108  
Capacity: 650 kN (Driven to 975 kN Bearing)  
Est. Length: 14.0 m  
No. Req'd: 48 (Includes 2 test piles)  
Test Piles driven to 1460 kN

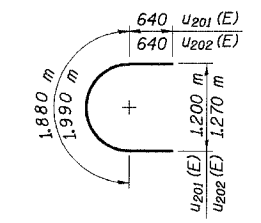
DESIGNED	DBT/MAS
CHECKED	BDL/PCA
DRAWN	CPM/PCA
CHECKED	DBT/MAS/JM



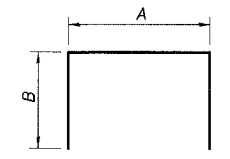
**SECTION A-A**



**SECTION B-B**



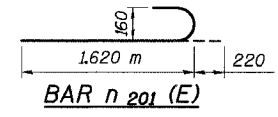
**BARS u201(E) & u202(E)**



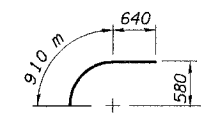
**BARS s201(E) thru s205(E), u204(E)**

**A & B DIMENSIONS**

Bar	A	B
s201(E)	1300	810
s202(E)	600	760
s203(E)	600	1330
s204(E)	1300	260
h209(E)	570	260
u204(E)	570	640



**BAR n201(E)**



**BAR u203(E)**

- Notes:
1. Work this Sheet with Sheet No. 72 & 73 of 91.
  2. All dimensions are in millimeters (mm) except as noted.

**BILL OF MATERIAL**

Bar	No.	Size	Length (m)	Shape
h202(E)	128	#15	7.800	—
h203(E)	6	#15	11.600	—
h204(E)	3	#20	6.000	—
h205(E)	3	#20	6.570	—
h206(E)	3	#15	2.400	—
h207(E)	6	#20	9.500	—
h208(E)	4	#15	9.400	—
h201(E)	236	#20	1.840	U
p201(E)	30	#20	10.600	—
s201(E)	196	#15	2.920	□
s202(E)	58	#15	2.120	□
s203(E)	40	#15	3.260	□
s204(E)	4	#15	1.820	□
t201(E)	154	#25	3.200	—
u201(E)	28	#15	3.160	U
u202(E)	8	#15	3.270	U
u203(E)	6	#15	1.550	U
u204(E)	3	#15	1.850	U
v201(E)	206	#20	4.700	—
w201(E)	40	#15	9.200	—
ITEM	UNIT	QUANTITY		
Structure Excavation	m <sup>3</sup>	316		
Concrete Structures	m <sup>3</sup>	311.1		
Reinforcement Bars, Epoxy Coated	kg	10,040		
Furnishing Steel Piles HP 360x108	m	644.0		
Driving Steel Piles	m	644.0		
Test Pile Steel HP 360x108	Each	2		
Controlled Low Strength Material	m <sup>3</sup>	4.5		

ILLINOIS DEPARTMENT OF TRANSPORTATION  
I-94 EAST BOUND / IL 394 SOUTH BOUND  
**PIER 2 SECTION & DETAILS**  
SB IL ROUTE 394 OVER THORN CREEK  
F.A.P. 332 SECTION (0203.1 & 0312-708W) R-3  
COOK COUNTY  
STA. 440+704.350 STRUCTURE NO. 016-2800  
DATE JUL 18, 2005  
SCALE ---  
**HNTB**

I:\k114s  
 1\24562\CAD\DRAWING\SN\_2800\cda\CTR\_19\_2800\ps190234s\_2800.dgn  
 28-NOV-2005 14:29