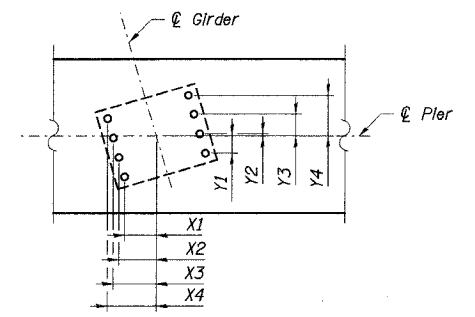
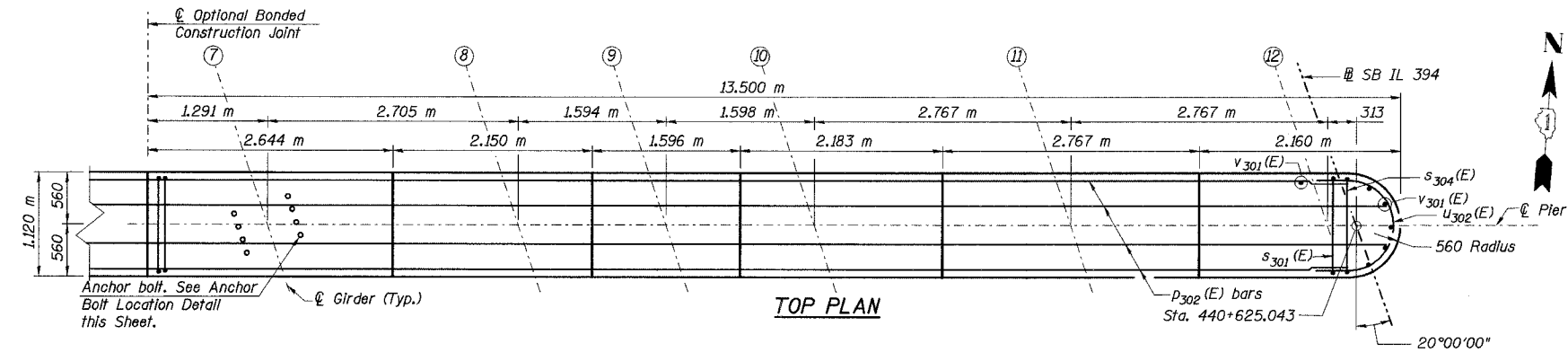


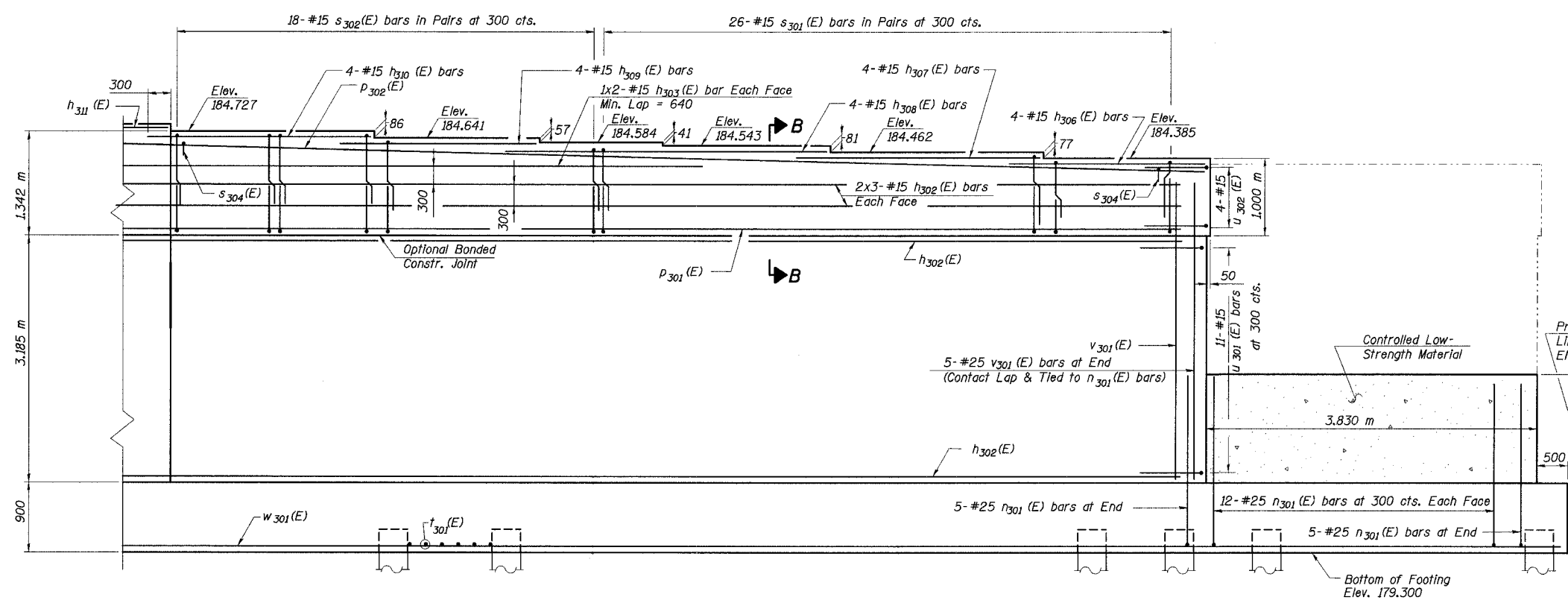
STATE OF ILLINOIS
DEPARTMENT OF TRANSPORTATION

ROUTE NO.	SECTION	COUNTY	TOTAL SHEETS	SHEET NO.	SHEET NO. 76 91 SHEETS
F. A. I. 80/94	-	COOK	870	590	
FED. ROAD DIST. NO. 1		ILLINOIS FED. AID PROJECT-			
(02033.1 & 0312-708W) R-3		CONTRACT NO. 62108			



ANCHOR BOLT LOCATION DETAILS

Gir.	X1	X2	X3	X4	Y1	Y2	Y3	Y4
7	221	267	313	358	114	26	166	304
8	221	267	313	358	114	26	166	304
9	216	264	312	360	108	31	170	308
10	211	262	312	362	102	36	174	311
11	211	262	312	362	102	36	174	311
12	211	261	311	362	102	36	174	311



ELEVATION
(Looking North)

Notes:

1. Work this sheet with No. 75, 77, & 78 of 91.
2. Space reinforcement in cap to miss anchor bolts.
3. Pour steps monolithically with cap.
4. All dimensions are in millimeters (mm) except as noted.
5. Reinforcement Bars designated (E) shall be epoxy coated.
6. For Bill of Materials and bar bending diagrams, See Sheet No. 78 of 91 Sheets.
7. Bars indicated thus "11x3-#15 cts." indicates 11 lines of bars with 3 lengths per line.

DESIGNED	DBT/MAS
CHECKED	BDL/PCA
DRAWN	CAB/JRB/PCA
CHECKED	DBT/KGN

ILLINOIS DEPARTMENT OF TRANSPORTATION
I-94 EAST BOUND / IL 394 SOUTH BOUND
PIER 3 PLAN & ELEVATION (EAST)

SB IL ROUTE 394 OVER THORN CREEK
F.A.P. 332 SECTION (02033.1 & 0312-708W) R-3
COOK COUNTY
STA. 440+704.350 STRUCTURE NO. 016-2800
DATE JUL 18, 2005
SCALE ---



L:\k11a\JA\34652\CADD\BA\SN_2800\cadd\CTR\1\1_2800\p1903246_2800.dgn
28-NOV-2005 14:41