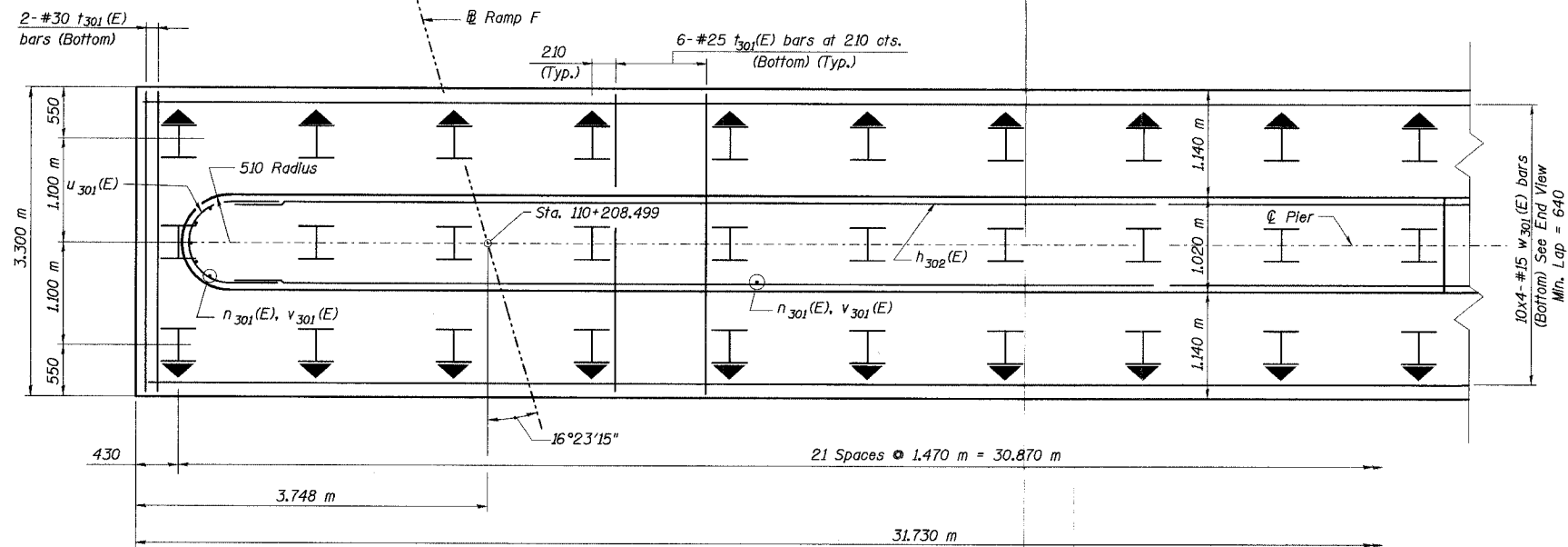


STATE OF ILLINOIS  
DEPARTMENT OF TRANSPORTATION

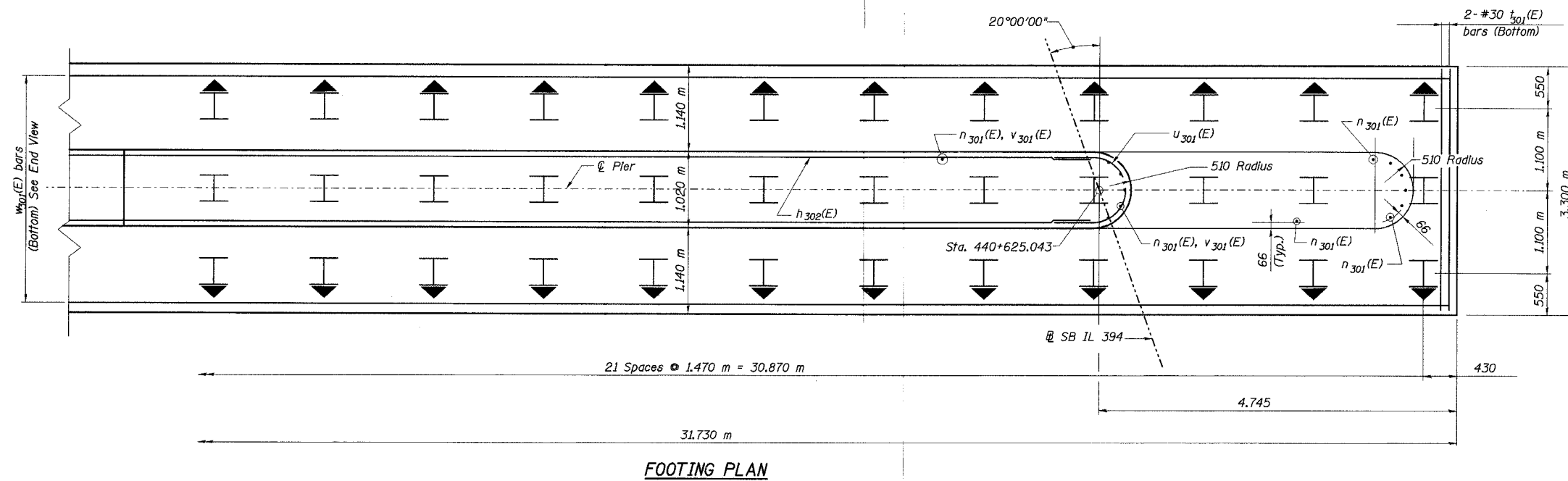
ROUTE NO.	SECTION	COUNTY	TOTAL SHEETS	SHEET NO.	SHEET NO. 77 91 SHEETS
F. A. I. 80/94	.	COOK	870	591	

FED. ROAD DIST. NO. 1 ILLINOIS FED. AID PROJECT-  
02033.1 & 0312-708W R-3 CONTRACT NO. 62106



**PILE DATA**

Type: HP 360x108  
Capacity: 650 kN (Driven to 975 kN Bearing)  
Est. Length: 11.30 m  
No. Req'd: 66 (Includes 2 test pile)  
Test Piles driven to 1460 kN



**Notes:**

1. Work this sheet with No. 75, 76, & 78 of 91.
2. All dimensions are in millimeters (mm) except as noted.
3. Reinforcement Bars designated (E) shall be epoxy coated.
4. For bill of Materials and bar bending diagrams, See Sheet No. 78 of 91 Sheets.
5. Bars indicated thus "11x3-#15 cts." indicates 11 lines of bars with 3 lengths per line.

▬ Indicates Battered Pile

DESIGNED	DBT/MAS
CHECKED	BDL/PCA
DRAWN	CAB/JRB/PCA
CHECKED	DBT/KGN

L:\kellie\p33452\CADD\STN-2800\cda\CTR\_19\_2800\p33452\_2800.dgn  
28-NOV-2005 14:42

ILLINOIS DEPARTMENT OF TRANSPORTATION  
I-94 EAST BOUND / IL 394 SOUTH BOUND  
**PIER 3 FOOTING PLAN**  
SB IL ROUTE 394 OVER THORN CREEK  
F.A.P. 332 SECTION (02033.1 & 0312-708W) R-3  
COOK COUNTY  
STA. 440+704.350 STRUCTURE NO. 016-2800  
DATE JUL 18, 2005  
SCALE ---  
**HNTB**