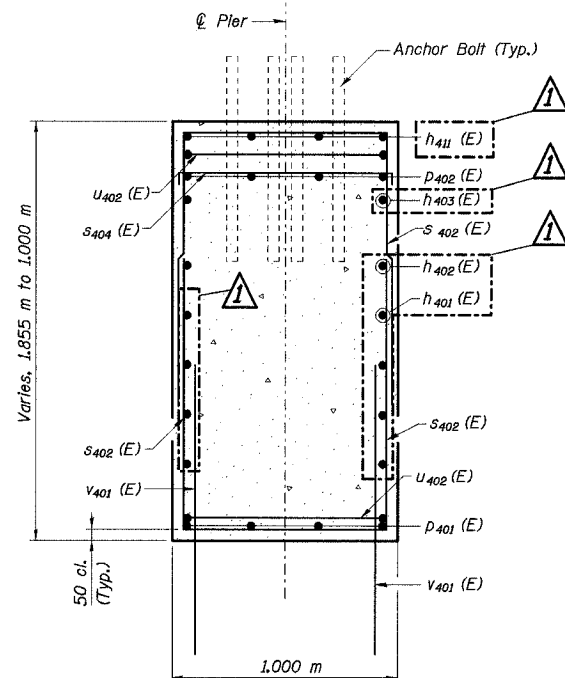
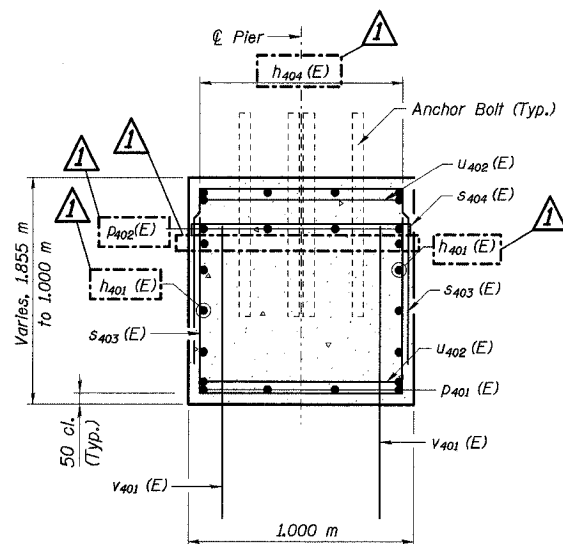


STATE OF ILLINOIS
DEPARTMENT OF TRANSPORTATION

ROUTE NO.	SECTION	COUNTY	TOTAL SHEETS	SHEET NO.	SHEET NO. 80 91 SHEETS
F. A. I. 80/94	.	COOK	870	594	
FED. ROAD DIST. NO. 1		ILLINOIS FED. AID PROJECT-		CONTRACT NO. 62106	
02033.1 & 0312-708W R-3					



SECTION A-A

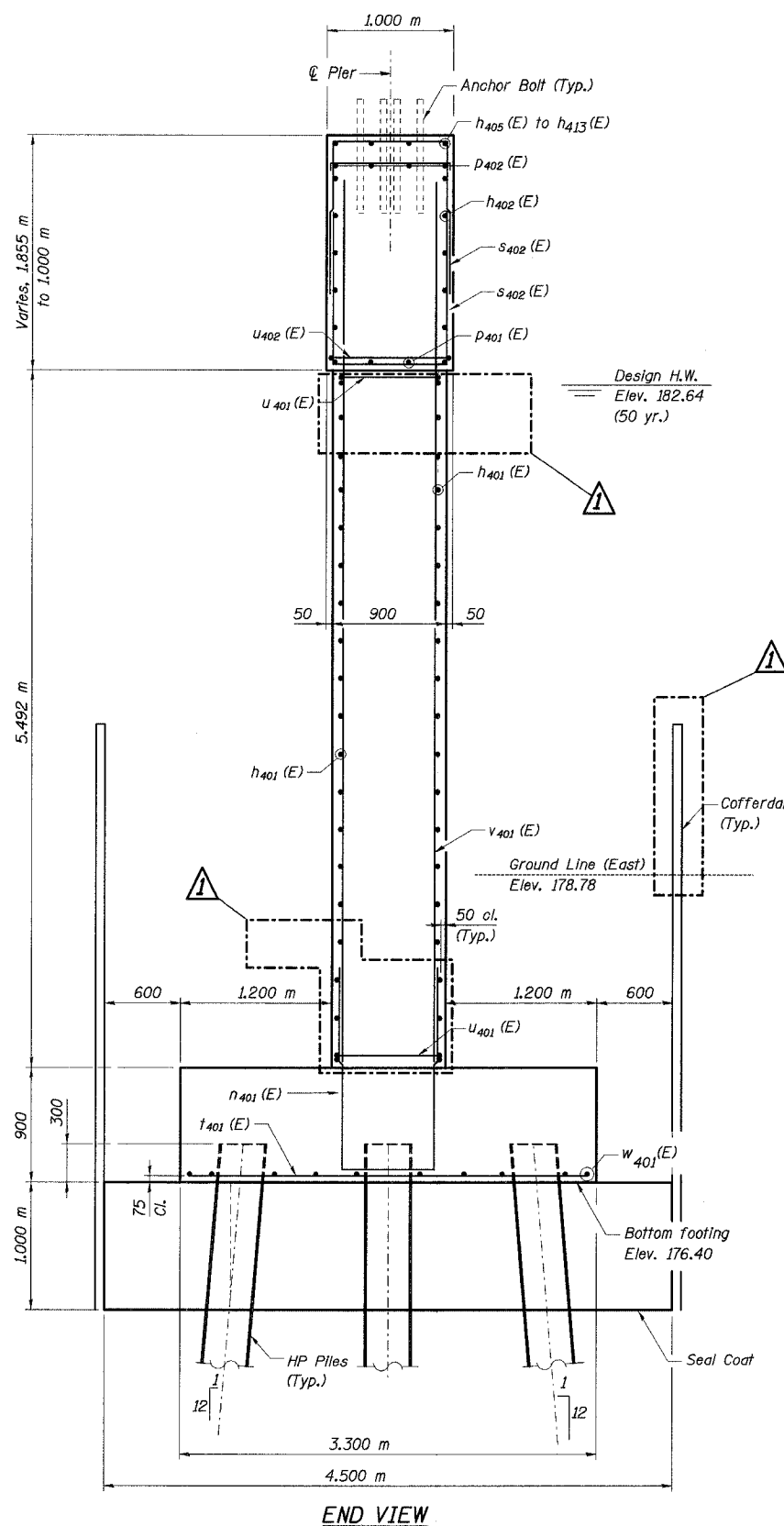


SECTION B-B

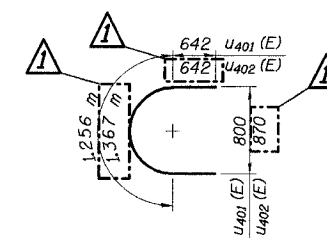
PILE DATA

Type: HP 360x108
Capacity: 650 kN (Driven to 975 kN Bearing)
Est. Length: 8.2 m
No. Req'd: 60 (Includes 2 test piles)
Test Piles driven to 1460 kN

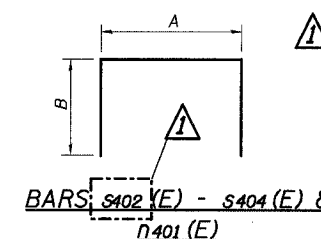
DESIGNED	DBT
CHECKED	BDL
DRAWN	SKM
CHECKED	DBT



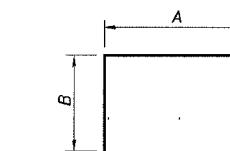
END VIEW



BAR U401 (E) & U402 (E)



BARS S402 (E) - S404 (E) & P401 (E)



BARS P402 (E)

A & B DIMENSIONS

Bar	A	B
S402 (E)	900	1200
S403 (E)	900	950
S404 (E)	900	260
P401 (E)	770	2200
P402 (E)	400	2200

Notes:

1. Work this Sheet with Sheet No. 79 of 91.
2. All dimensions are in millimeters (mm) except as noted.

BILL OF MATERIAL

Bar	No.	Size	Length (m)	Shape	
h401 (E)	92	#15	11.470	—	
h402 (E)	2	#15	11.980	—	
h403 (E)	2	#15	5.600	—	
h404 (E)	4	#15	2.030	—	
h405 (E)	4	#15	3.060	—	
h406 (E)	8	#15	2.720	—	
h407 (E)	4	#15	2.930	—	
h408 (E)	8	#15	2.690	—	
h409 (E)	4	#15	2.540	—	
h410 (E)	4	#15	2.470	—	
h411 (E)	4	#15	1.510	—	
U401 (E)	92	#25	5.170	L	
U402 (E)	12	#25	2.600	L	
P401 (E)	8	#25	11.810	—	
P402 (E)	8	#25	12.180	—	
S402 (E)	90	#15	3.300	—	
S403 (E)	60	#15	2.800	—	
S404 (E)	26	#15	1.420	—	
V401 (E)	99	#30	3.100	—	
U401 (E)	38	#15	2.540	—	
U402 (E)	13	#15	2.650	—	
V401 (E)	164	#25	6.230	—	
W401 (E)	30	#15	9.880	—	
ITEM				UNIT	QUANTITY
Cofferdam Excavation				m ³	470
Cofferdam				Each	1
Concrete Structures				m ³	236.8
Reinforcement Bars, Epoxy Coated				kg	11,770
Furnishing Steel Piles HP 360x108				m	476.0
Driving Steel Piles				m	476.0
Test Pile Steel HP 360x108				Each	2
Controlled Low Strength Material				m ³	6.9
Seal Coat Concrete				m ³	133.4

ILLINOIS DEPARTMENT OF TRANSPORTATION
I-94 EAST BOUND / IL 394 SOUTH BOUND
PIER 4 SECTION & DETAILS
SB IL ROUTE 394 OVER THORN CREEK
F.A.P. 332 SECTION (02033.1 & 0312-708W) R-3
COOK COUNTY
STA. 440+704.350 STRUCTURE NO. 016-2800
DATE JUL 18, 2005
SCALE ---

HNTB

Revised 11/30/2005, PCA

L:\k11a\j\34562\CADD\B\1\N_2800\cadd\CTR\1\9_2800\p41\94\246_2800.dgn
28-NOV-2005 14:45