

STATE OF ILLINOIS  
DEPARTMENT OF TRANSPORTATION

ROUTE NO.	SECTION	COUNTY	TOTAL SHEETS	SHEET NO.	SHEET NO. 37 56 SHEETS
F. A. I. 80/94	*	COOK	870	647	
FED. ROAD DIST. NO. 1		ILLINOIS FED. AID PROJECT-		CONTRACT NO. 62108	

BILL OF MATERIAL

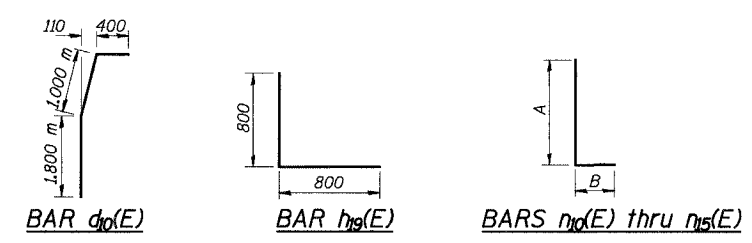
Bar No.	Size	Length (m)	Shape
d <sub>0</sub> (E)	#25	3,000	┌
d <sub>1</sub> (E)	#25	2,900	┌
h <sub>0</sub> (E)	#15	8,070	┌
h <sub>1</sub> (E)	#15	2,670	┌
h <sub>2</sub> (E)	#15	6,900	┌
h <sub>3</sub> (E)	#15	4,200	┌
h <sub>4</sub> (E)	#15	2,440	┌
h <sub>5</sub> (E)	#20	8,070	┌
h <sub>6</sub> (E)	#15	8,700	┌
h <sub>7</sub> (E)	#15	9,100	┌
h <sub>8</sub> (E)	#15	10,880	┌
h <sub>9</sub> (E)	#15	1,600	┌
h <sub>20</sub> (E)	#15	2,400	┌
h <sub>0</sub> (E)	#20	3,190	┌
h <sub>11</sub> (E)	#25	3,800	┌
h <sub>22</sub> (E)	#20	3,980	┌
h <sub>33</sub> (E)	#25	4,550	┌
h <sub>44</sub> (E)	#15	2,210	┌
h <sub>55</sub> (E)	#30	3,650	┌
h <sub>66</sub> (E)	#20	5,480	┌
sp <sub>20</sub>	#15	13,550	W
h <sub>77</sub> (E)	#25	4,330	┌
h <sub>11</sub> (E)	#25	4,890	┌
h <sub>22</sub> (E)	#25	4,170	┌
h <sub>33</sub> (E)	#25	4,730	┌
v <sub>0</sub> (E)	#20	3,000	┌
v <sub>11</sub> (E)	#25	3,000	┌
v <sub>22</sub> (E)	#15	2,550	┌
v <sub>33</sub> (E)	#20	3,180	┌
v <sub>44</sub> (E)	#15	1,060	┌
v <sub>55</sub> (E)	#15	0,790	┌
v <sub>66</sub> (E)	#15	1,800	┌
v <sub>77</sub> (E)	#30	5,370	┌
v <sub>88</sub> (E)	#15	5,370	┌
v <sub>99</sub> (E)	#20	1,840	┌
v <sub>20</sub> (E)	#15	1,670	┌
v <sub>21</sub>	#35	14,700	┌
v <sub>22</sub> (E)	#15	1,110	┌
w <sub>0</sub> (E)	#20	8,900	┌
w <sub>11</sub> (E)	#25	9,100	┌
w <sub>22</sub> (E)	#20	6,870	┌
w <sub>33</sub> (E)	#25	7,000	┌

Item	Unit	Quantity
Structure Excavation	m <sup>3</sup>	346
Concrete Structures	m <sup>3</sup>	297.6
Reinforcement Bars, Epoxy Coated	kg	15,830
Reinforcement Bars	kg	71,050
Bar Splicers	Each	49
Porous Granular Embankment (Special)	m <sup>3</sup>	716
Permanent Casing	m	254.1
Drilled Shaft in Soil, 1220 mm	m	298.1

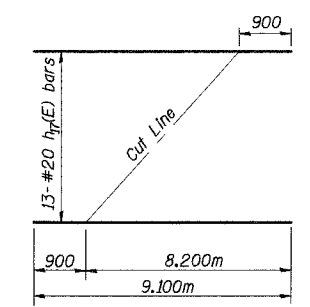
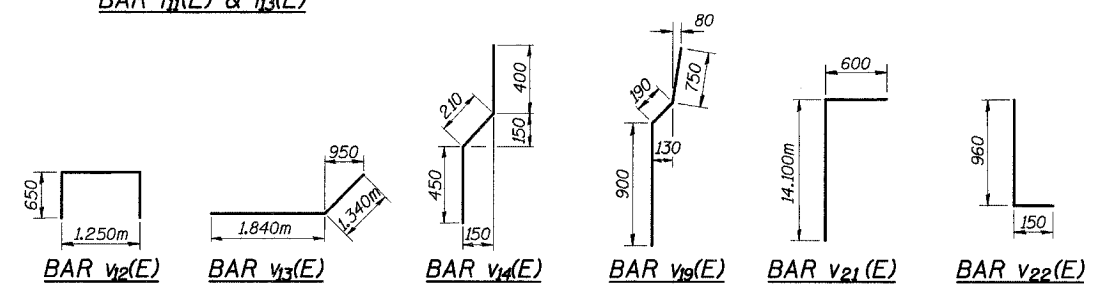
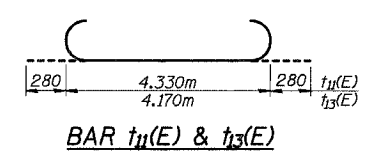
\* Length shown is height of spiral.

ILLINOIS DEPARTMENT OF TRANSPORTATION  
1-94 EAST BOUND / IL 394 SOUTH BOUND  
EAST ABUTMENT & WINGWALLS  
DETAILS & BILL OF MATERIALS  
EB I-94 OVER THORN CREEK  
F.A.I. 94 SECTION (0203.1 & 0312-708W) R-3  
COOK COUNTY  
STA. 20+509.000 STRUCTURE NO. 016-2807  
DATE JUL 18, 2005  
SCALE ---

HNTB

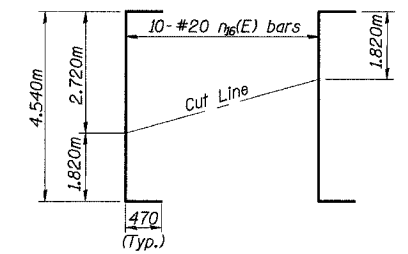


Rebar	A (m)	B (m)
n <sub>0</sub> (E)	2.720	0.470
n <sub>1</sub> (E)	3.250	0.550
n <sub>2</sub> (E)	3.510	0.470
n <sub>3</sub> (E)	4.000	0.550
n <sub>4</sub> (E)	1.800	0.410
n <sub>5</sub> (E)	3.000	0.650



FIELD CUTTING DIAGRAM for h<sub>17</sub>(E) bars

Order h<sub>17</sub>(E) full length. Cut as shown for F.F. and use remainder of bars in B.F.



FIELD CUTTING DIAGRAM for n<sub>16</sub>(E) bars

Order n<sub>16</sub>(E) full length. Cut as shown for F.F. and use remainder of bars in B.F.

L:\s1\45\2\CADD\B\SN\_2807\code\CTR\_19\_2807\code\1909024s\_2807.dgn  
20-NOV-2005 14:47

DESIGNED	JJK
CHECKED	KGN
DRAWN	LK
CHECKED	KGN