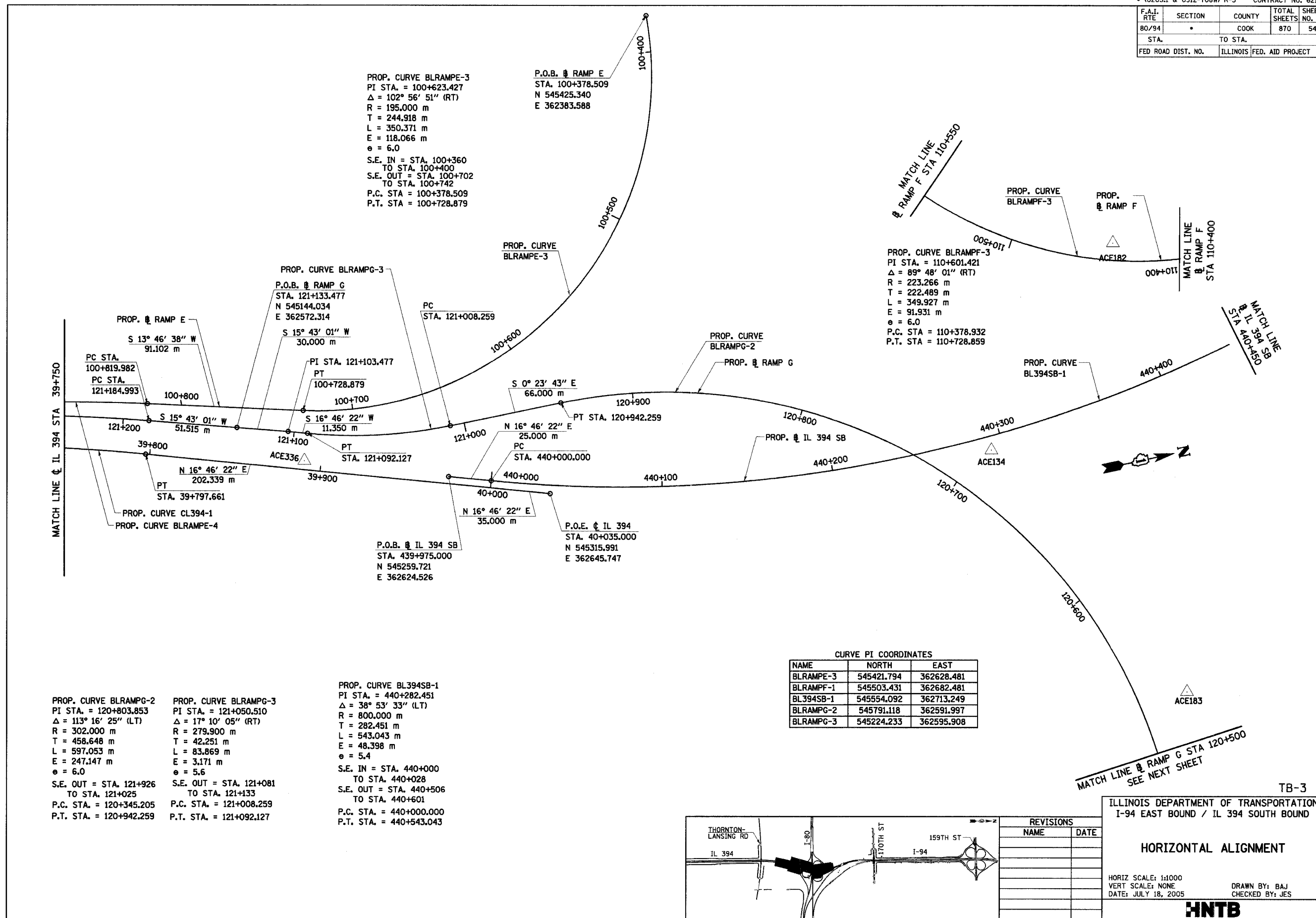


F.A.I. RTE	SECTION	COUNTY	TOTAL SHEETS	SHEET NO.
80/94	*	COOK	870	54
STA.		TO STA.		
FED ROAD DIST. NO.		ILLINOIS FED. AID PROJECT		

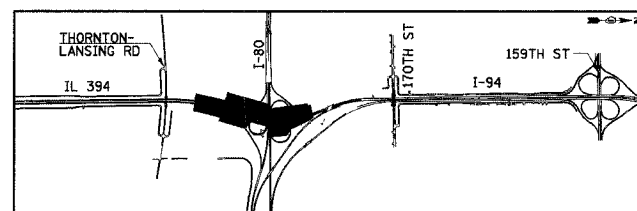


PROP. CURVE BLRAMPG-2
 PI STA. = 120+803.853
 $\Delta = 113^\circ 16' 25''$ (LT)
 R = 302.000 m
 T = 458.648 m
 L = 597.053 m
 E = 247.147 m
 $e = 6.0$
 S.E. OUT = STA. 121+926
 TO STA. 121+025
 P.C. STA. = 120+345.205
 P.T. STA. = 120+942.259

PROP. CURVE BLRAMPG-3
 PI STA. = 121+050.510
 $\Delta = 17^\circ 10' 05''$ (RT)
 R = 279.900 m
 T = 42.251 m
 L = 83.869 m
 E = 3.171 m
 $e = 5.6$
 S.E. OUT = STA. 121+081
 TO STA. 121+133
 P.C. STA. = 121+008.259
 P.T. STA. = 121+092.127

PROP. CURVE BL394SB-1
 PI STA. = 440+282.451
 $\Delta = 38^\circ 53' 33''$ (LT)
 R = 800.000 m
 T = 282.451 m
 L = 543.043 m
 E = 48.398 m
 $e = 5.4$
 S.E. IN = STA. 440+000
 TO STA. 440+028
 S.E. OUT = STA. 440+506
 TO STA. 440+601
 P.C. STA. = 440+000.000
 P.T. STA. = 440+543.043

CURVE PI COORDINATES		
NAME	NORTH	EAST
BLRAMPE-3	545421.794	362628.481
BLRAMPF-1	545503.431	362682.481
BL394SB-1	545554.092	362713.249
BLRAMPG-2	545791.118	362591.997
BLRAMPG-3	545224.233	362595.908



REVISIONS	
NAME	DATE

ILLINOIS DEPARTMENT OF TRANSPORTATION
 I-94 EAST BOUND / IL 394 SOUTH BOUND

HORIZONTAL ALIGNMENT

HORIZ SCALE: 1:1000
 VERT SCALE: NONE
 DATE: JULY 18, 2005

DRAWN BY: BAJ
 CHECKED BY: JES

HNTB