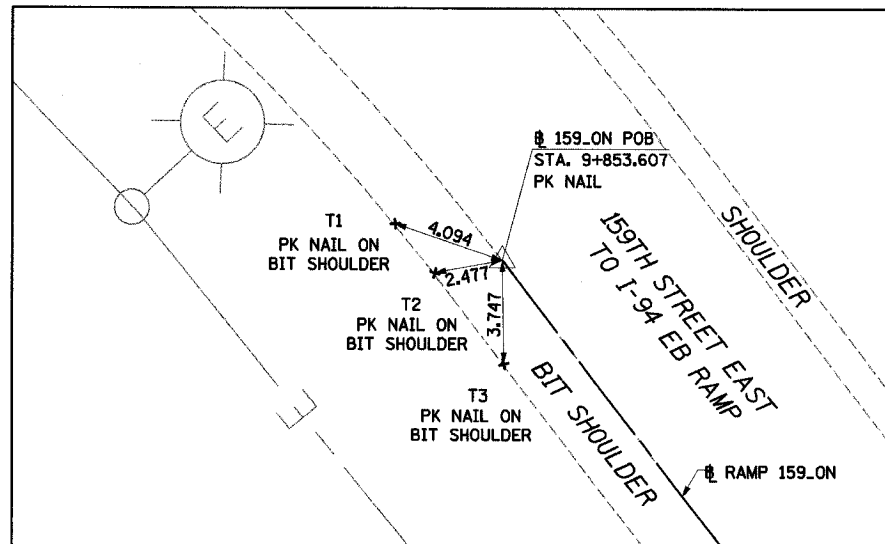
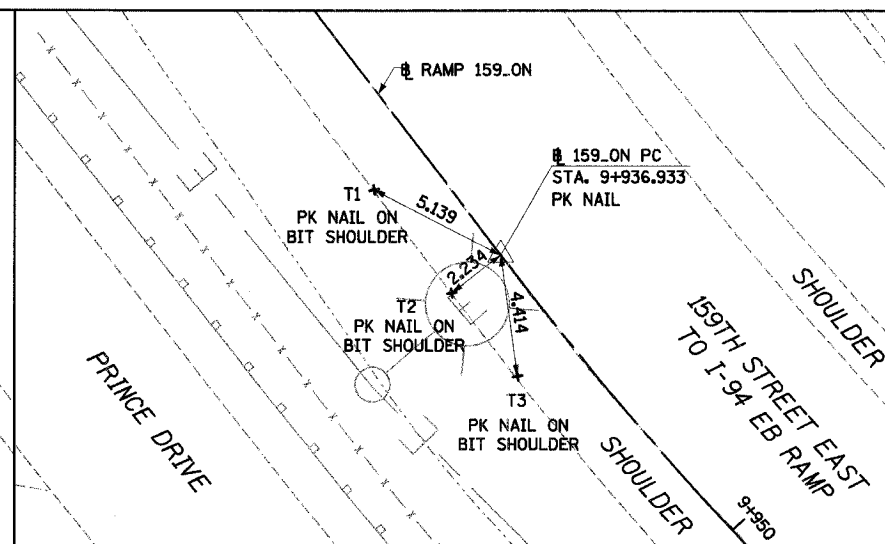


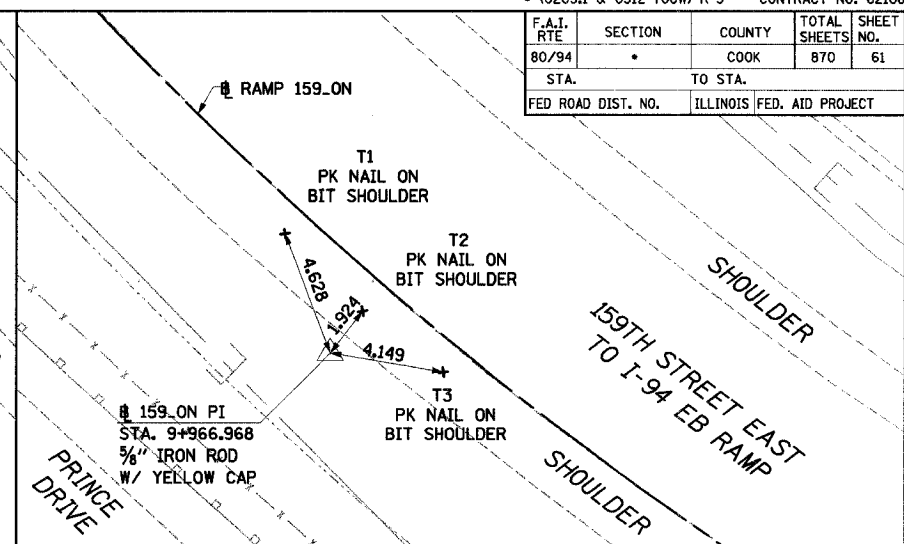
F.A.I. RTE.	SECTION	COUNTY	TOTAL SHEETS	SHEET NO.
80/94		COOK	870	61
STA. TO STA.		ILLINOIS FED. AID PROJECT		
FED ROAD DIST. NO.				



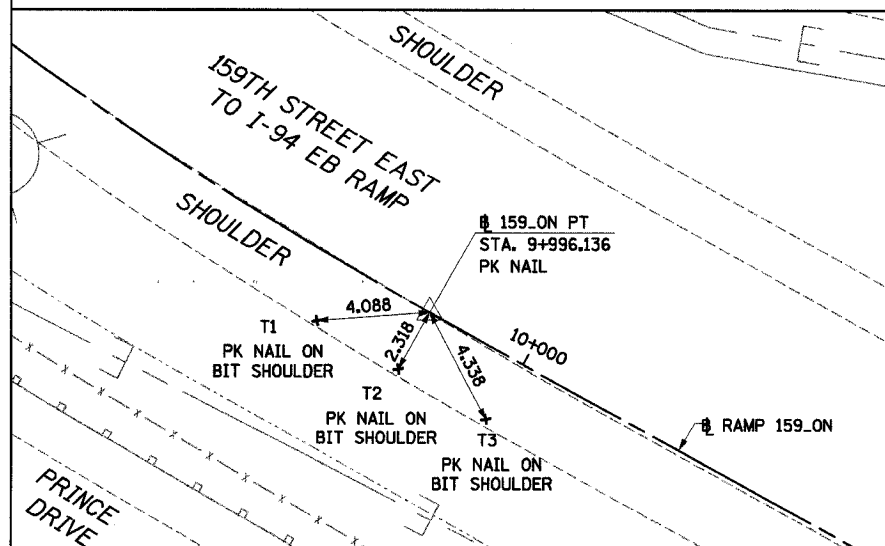
RAMP 159_ON POB STA 9+853.607
 NORTHING: 547976.581 EASTING: 362273.780



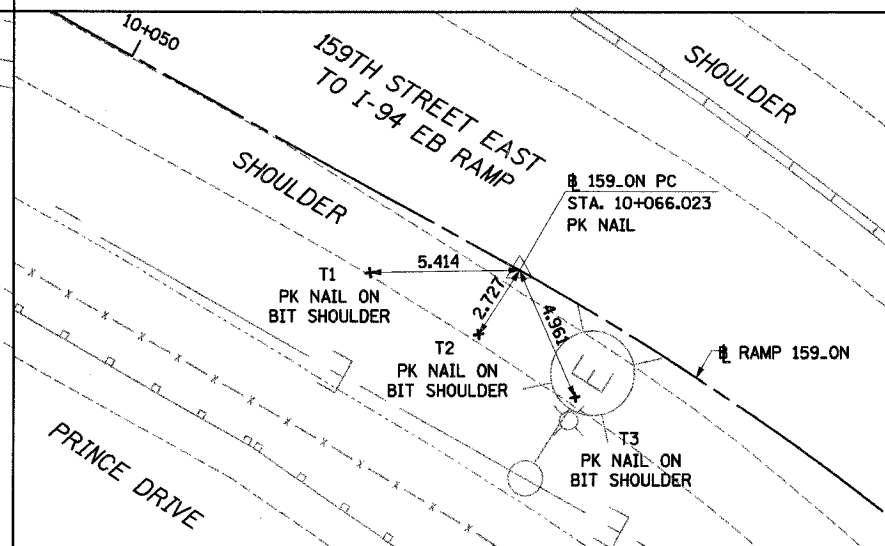
RAMP 159_ON PC STA 9+936.933
 NORTHING: 547910.326 EASTING: 362324.312



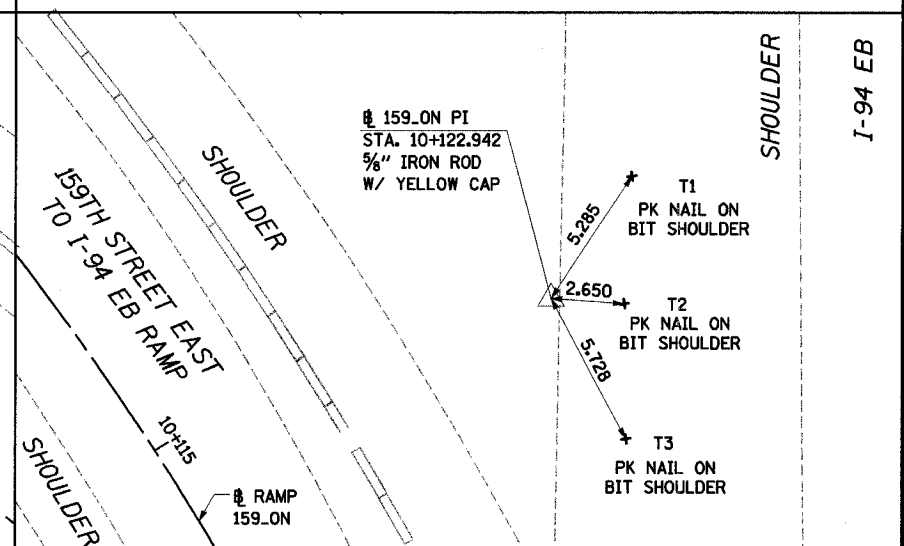
RAMP 159_ON PI STA 9+966.968
 NORTHING: 547886.444 EASTING: 362342.527



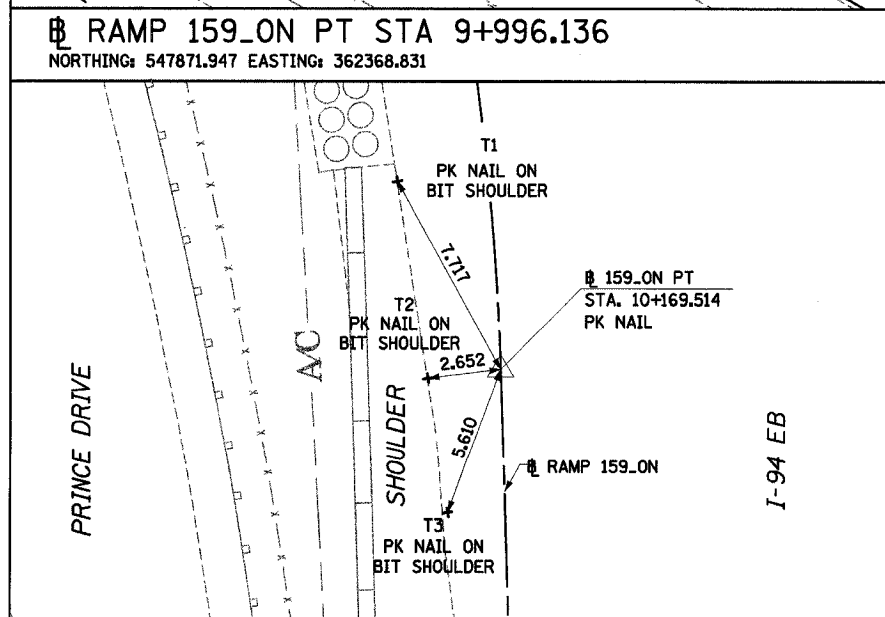
RAMP 159_ON PT STA 9+996.136
 NORTHING: 547871.947 EASTING: 362368.831



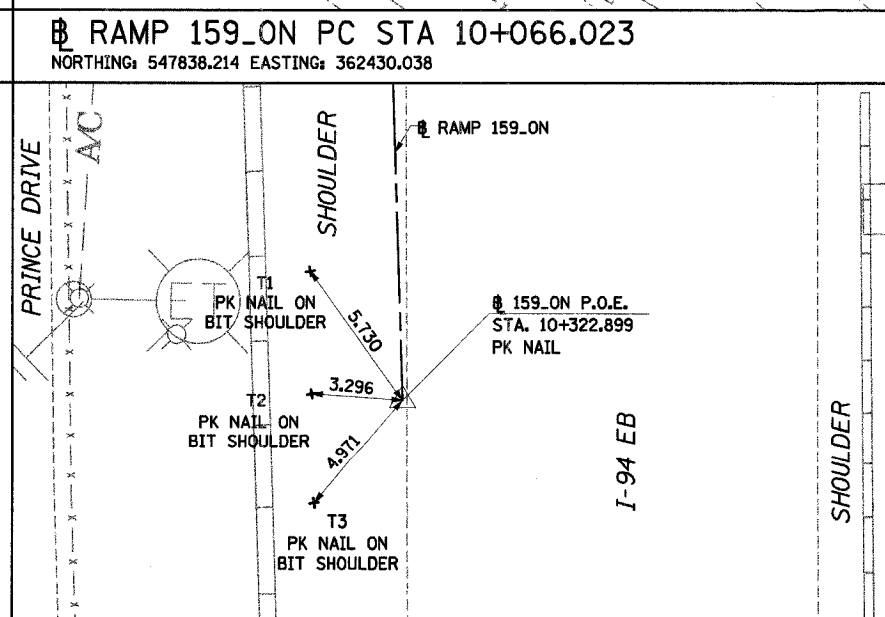
RAMP 159_ON PC STA 10+066.023
 NORTHING: 547838.214 EASTING: 362430.038



RAMP 159_ON PI STA 10+122.942
 NORTHING: 547810.740 EASTING: 362479.887



RAMP 159_ON PT STA 10+169.514
 NORTHING: 547753.852 EASTING: 362481.719



RAMP 159_ON POE STA 10+322.899
 NORTHING: 547600.545 EASTING: 362486.654

NOTE: ALL MEASUREMENT ARE IN METERS (m) UNLESS OTHERWISE NOTED.

REVISIONS	
NAME	DATE

ILLINOIS DEPARTMENT OF TRANSPORTATION
 I-94 EAST BOUND / IL 394 SOUTH BOUND

**ALIGNMENT TIES
 159TH STREET EB
 TO I-94 EB RAMP**

HORIZ SCALE:
 VERT SCALE:
 DATE: JULY 18, 2005

DRAWN BY: JYMC
 CHECKED BY: JES

HNTB