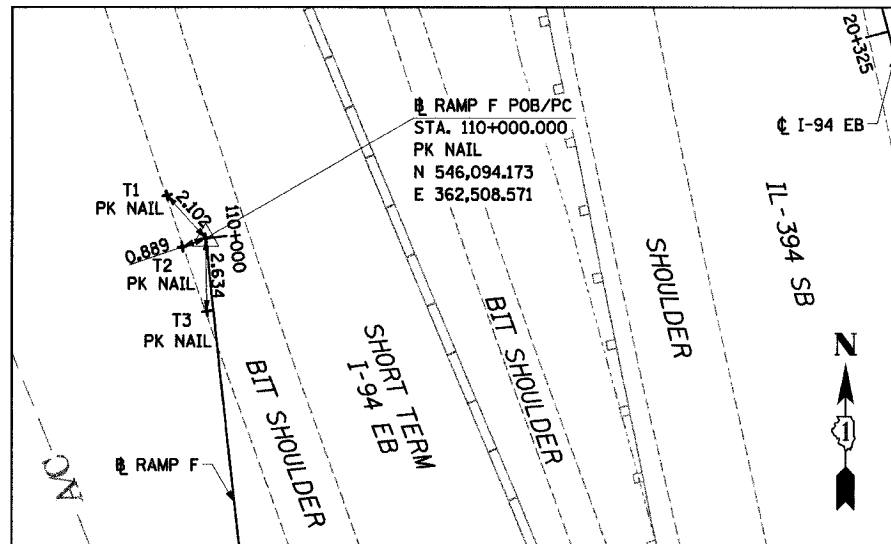
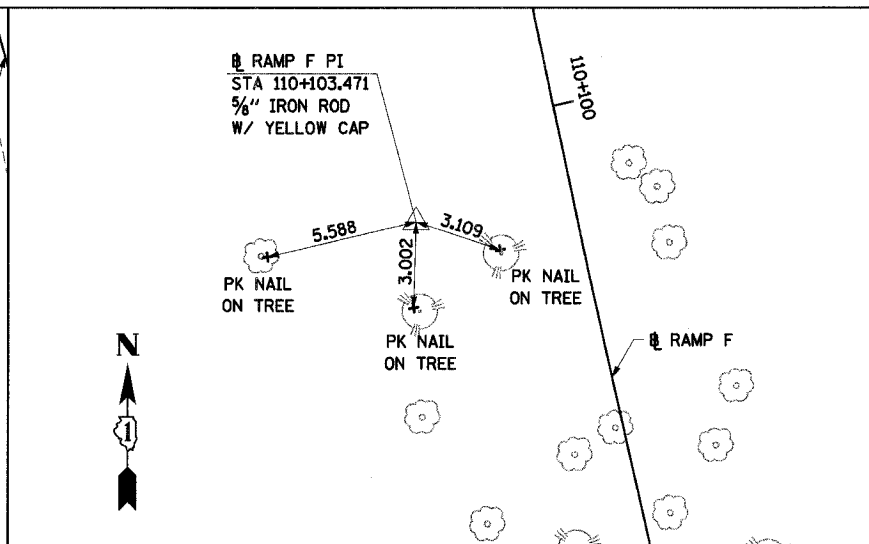


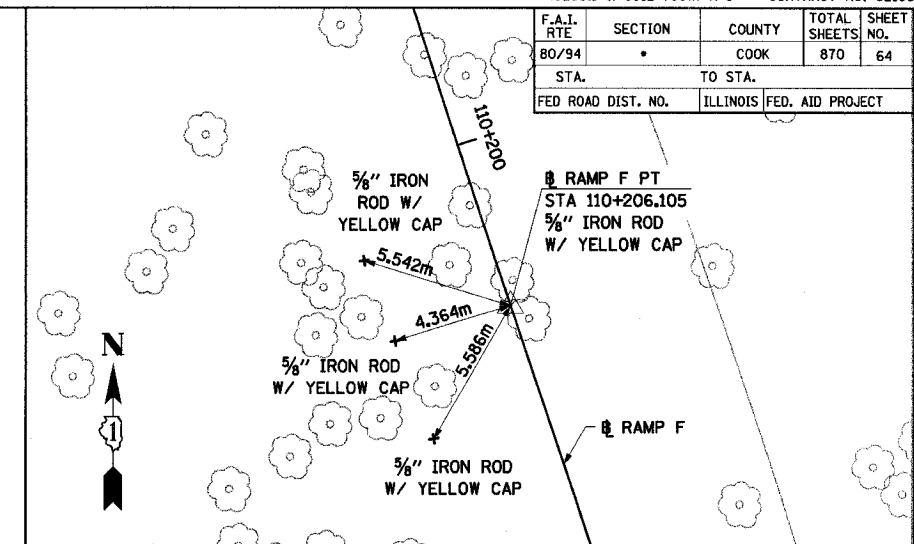
F.A.L. RTE	SECTION	COUNTY	TOTAL SHEETS	SHEET NO.
80/94	*	COOK	870	64
STA.		TO STA.		
FED ROAD DIST. NO.		ILLINOIS FED. AID PROJECT		



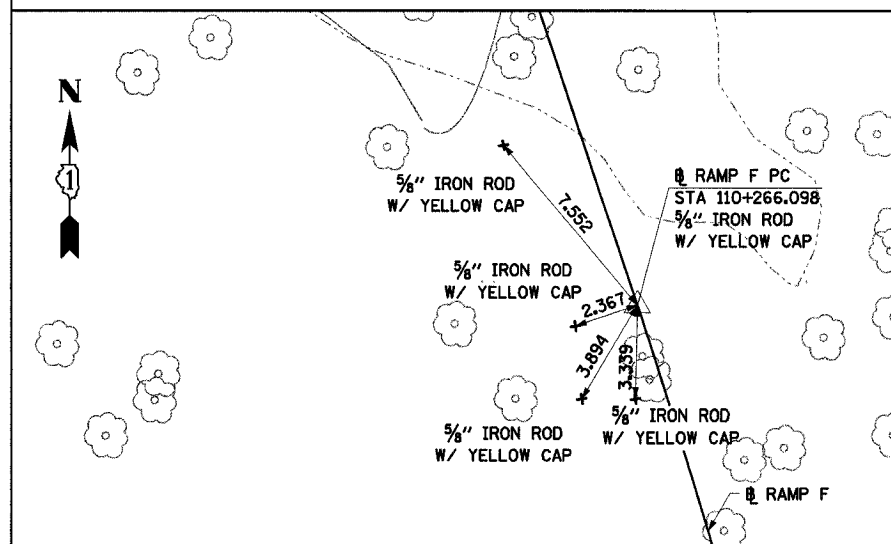
RAMP F POB/PC STA 110+000.000
NORTHING: 546,094.173 EASTING: 362,508.571



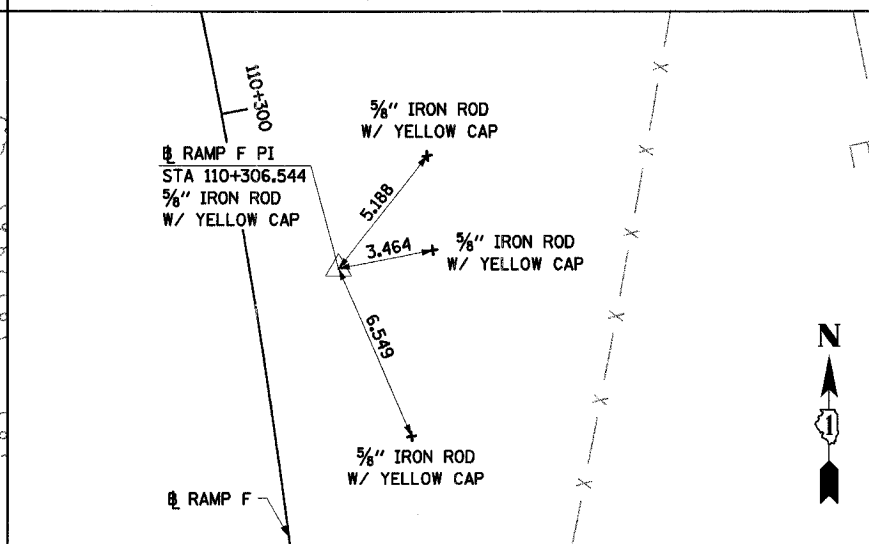
RAMP F PI STA 110+103.471
NORTHING: 545,991.249 EASTING: 362,519.191



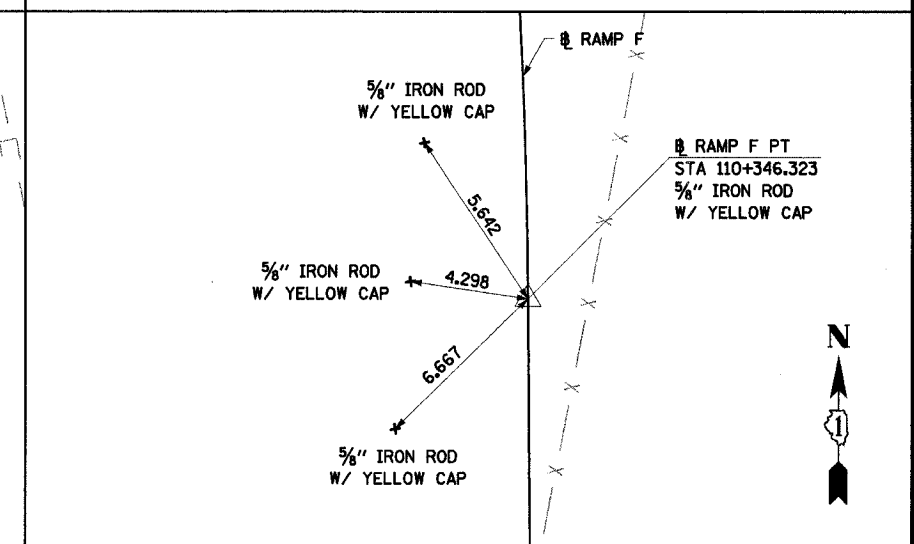
RAMP F PT STA 110+206.105
NORTHING: 545,893.129 EASTING: 362,552.036



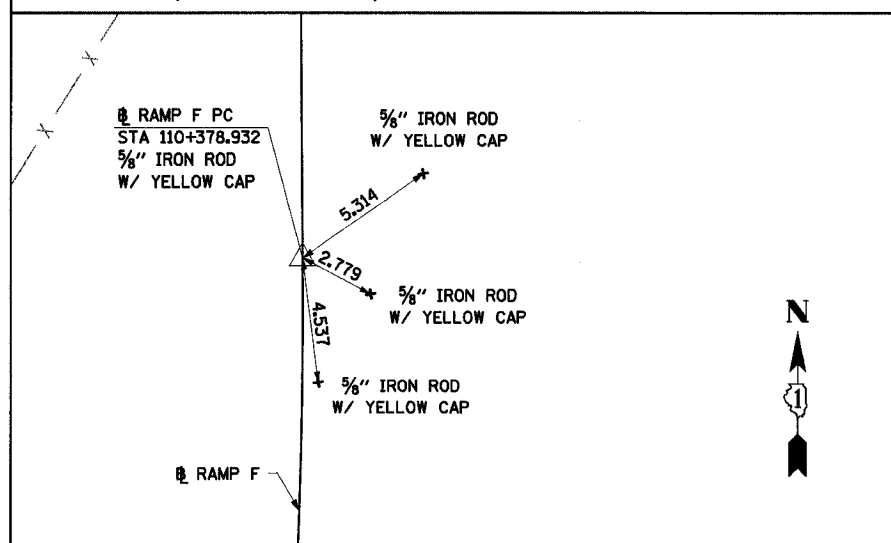
RAMP F PC STA 110+266.098
NORTHING: 545,836.239 EASTING: 362,571.079



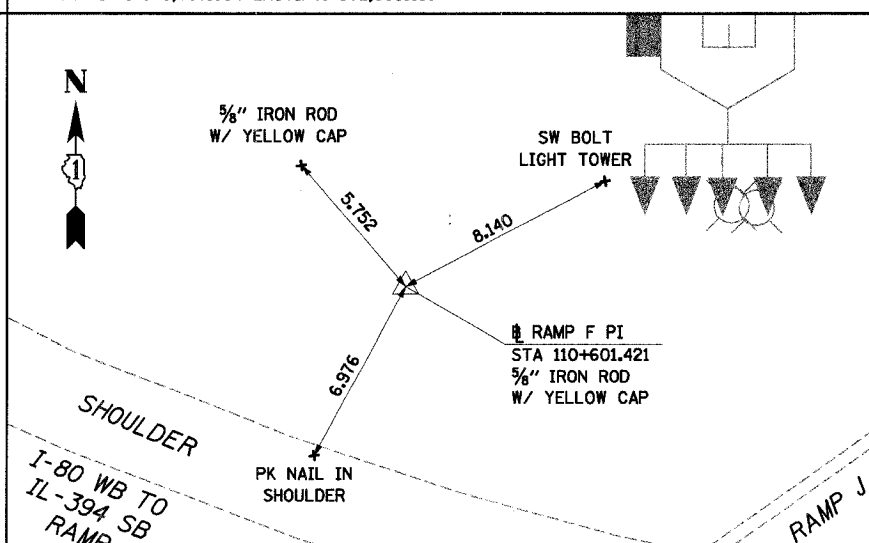
RAMP F PI STA 110+306.544
NORTHING: 545,797.884 EASTING: 362,583.918



RAMP F PT STA 110+346.323
NORTHING: 545,757.439 EASTING: 362,584.258



RAMP F PC STA 110+378.932
NORTHING: 545,724.831 EASTING: 362,584.532



RAMP F PI STA 110+601.421
NORTHING: 545,502.350 EASTING: 362,586.403

NOTE:
ALL MEASUREMENT ARE IN METERS (m)
UNLESS OTHERWISE NOTED.

ILLINOIS DEPARTMENT OF TRANSPORTATION
I-94 EAST BOUND / IL 394 SOUTH BOUND

**ALIGNMENT TIES
RAMP F**

REVISIONS		
NAME	DATE	

HORIZ SCALE:
VERT SCALE:
DATE: JULY 18, 2005

DRAWN BY: JYMC
CHECKED BY: JES

HNTB