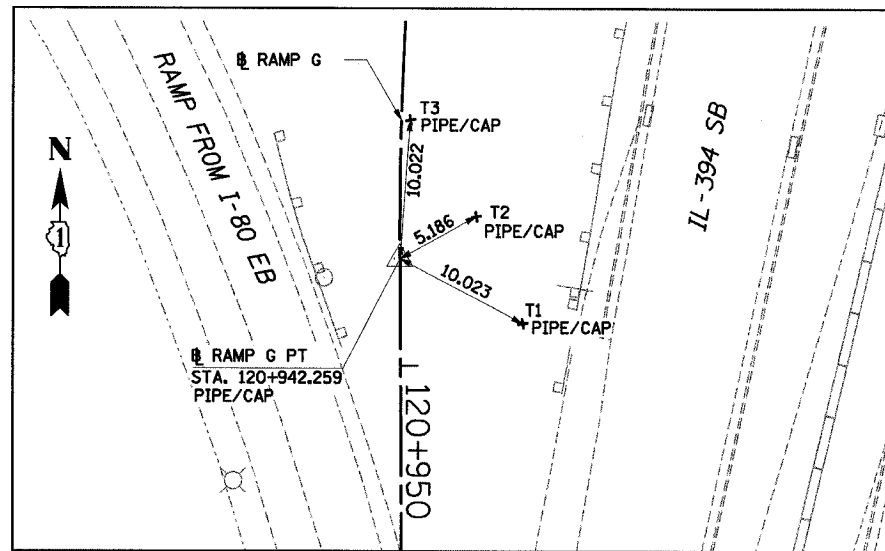
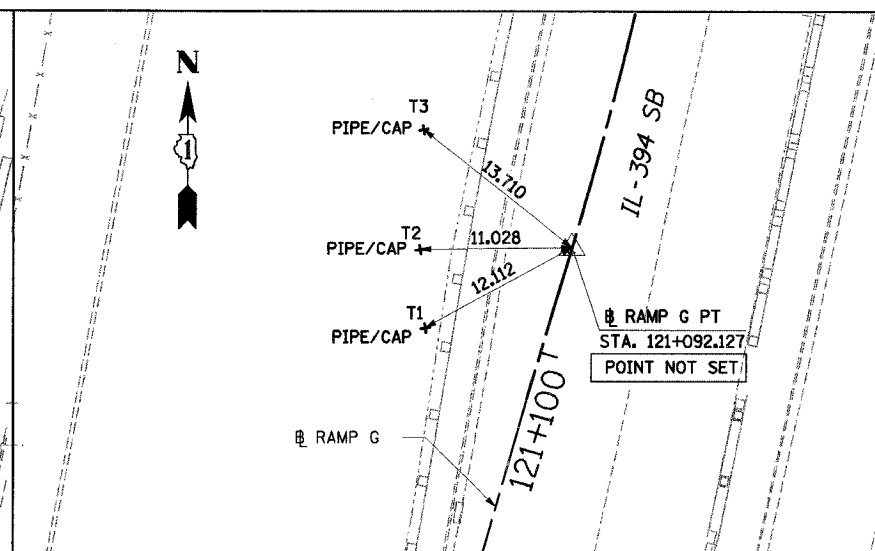


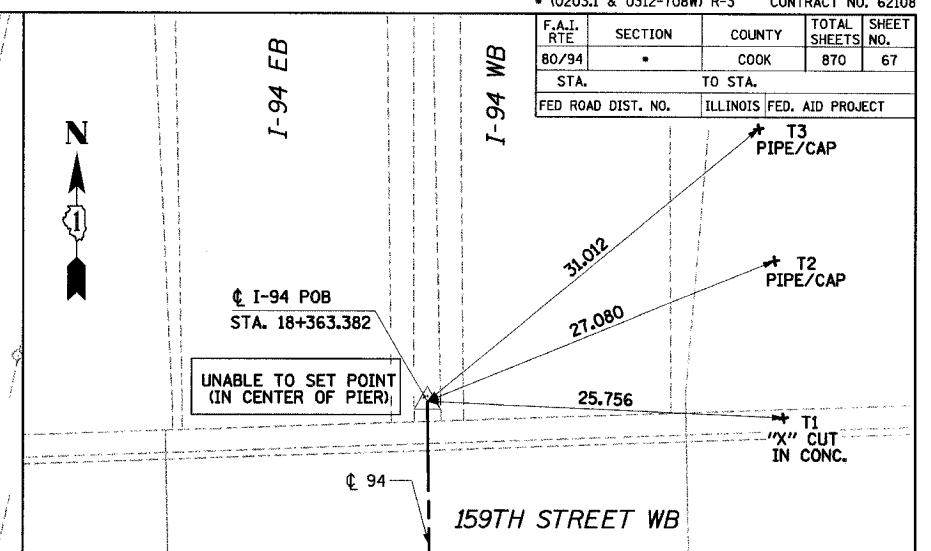
F.A.I. RTE	SECTION	COUNTY	TOTAL SHEETS NO.
80/94	*	COOK	870 67
STA. TO STA.		ILLINOIS FED. AID PROJECT	
FED ROAD DIST. NO.			



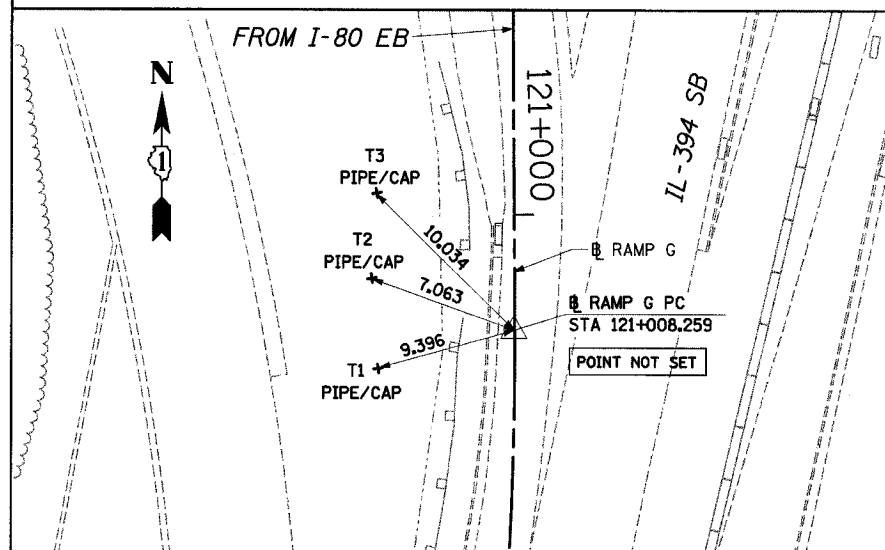
RAMP G PT STA 120+942.259
NORTHING: 545332.481 EASTING: 362595.161



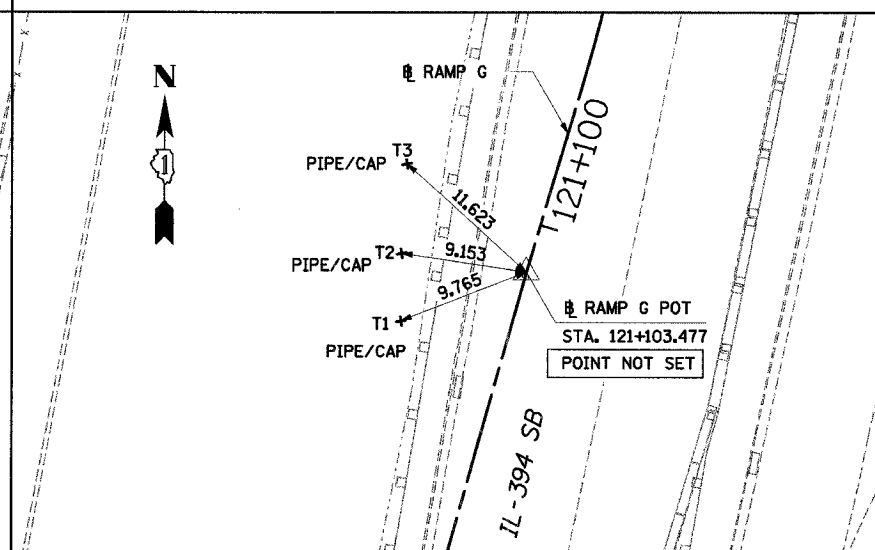
RAMP G PT STA 121+092.127
NORTHING: 545183.779 EASTING: 362583.715



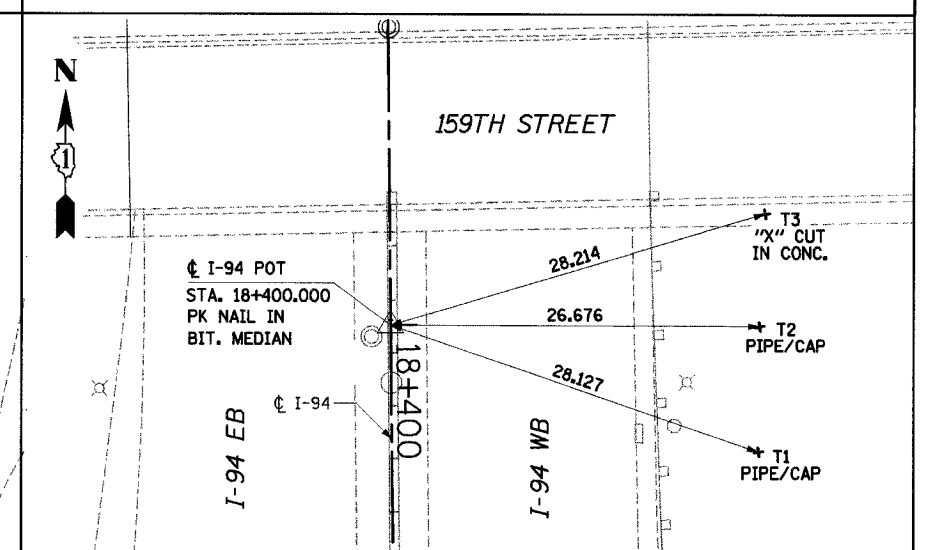
I-94 POB STA 18+363.382
NORTHING: 548061.527 EASTING: 362500.373



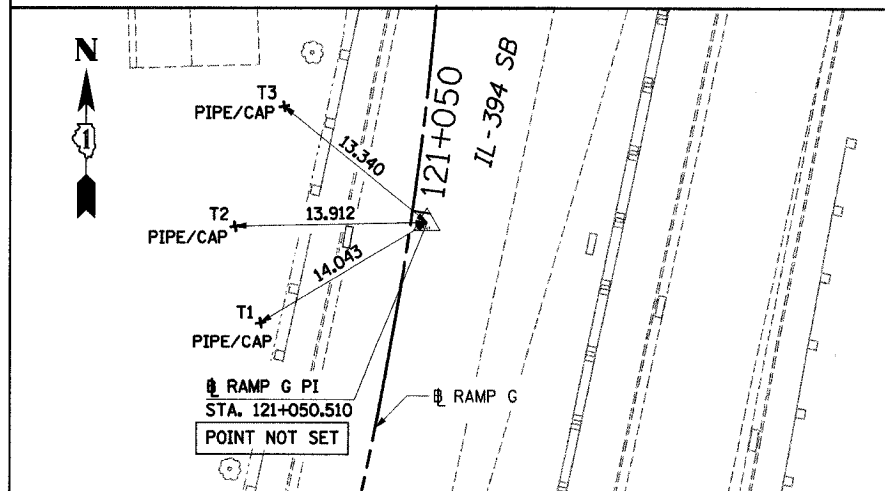
RAMP G PC STA 121+008.259
NORTHING: 545266.483 EASTING: 362595.617



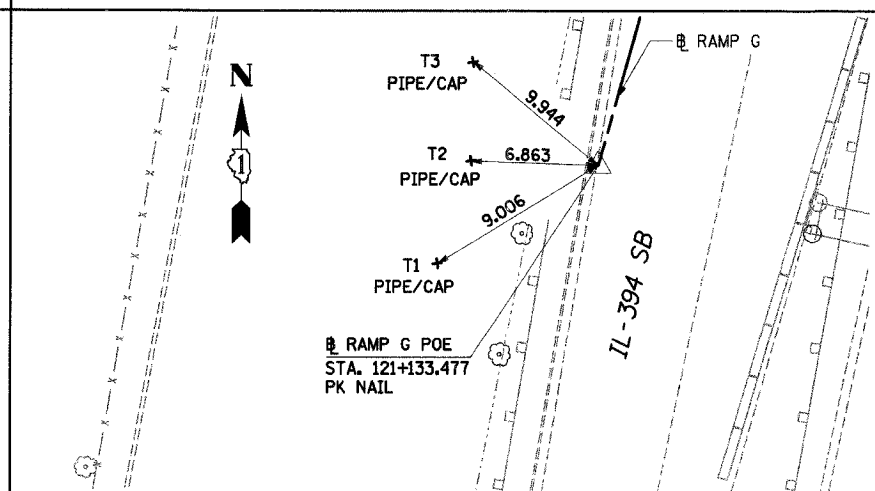
RAMP G POT STA 121+103.477
NORTHING: 545172.912 EASTING: 362580.440



I-94 POT STA 18+400.000
NORTHING: 548024.912 EASTING: 362500.829



RAMP G PI STA 121+050.510
NORTHING: 545224.233 EASTING: 362595.908



RAMP G POE STA 121+133.477
NORTHING: 545144.034 EASTING: 362572.314

NOTE:
ALL MEASUREMENT ARE IN METERS (m)
UNLESS OTHERWISE NOTED.

REVISIONS	
NAME	DATE

ILLINOIS DEPARTMENT OF TRANSPORTATION
I-94 EAST BOUND / IL 394 SOUTH BOUND

**ALIGNMENT TIES
RAMP G & I-94**

HORIZ SCALE: N.T.S.
VERT SCALE:
DATE: JULY 18, 2005

DRAWN BY:BAJ
CHECKED BY:JES

