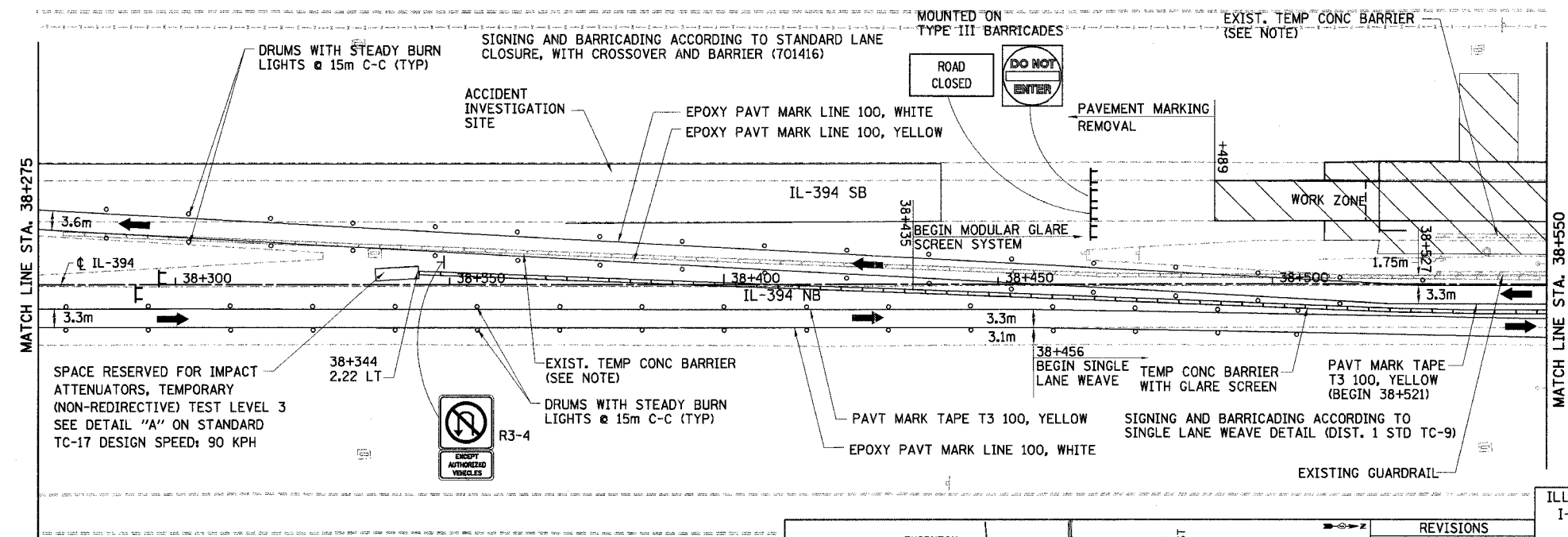
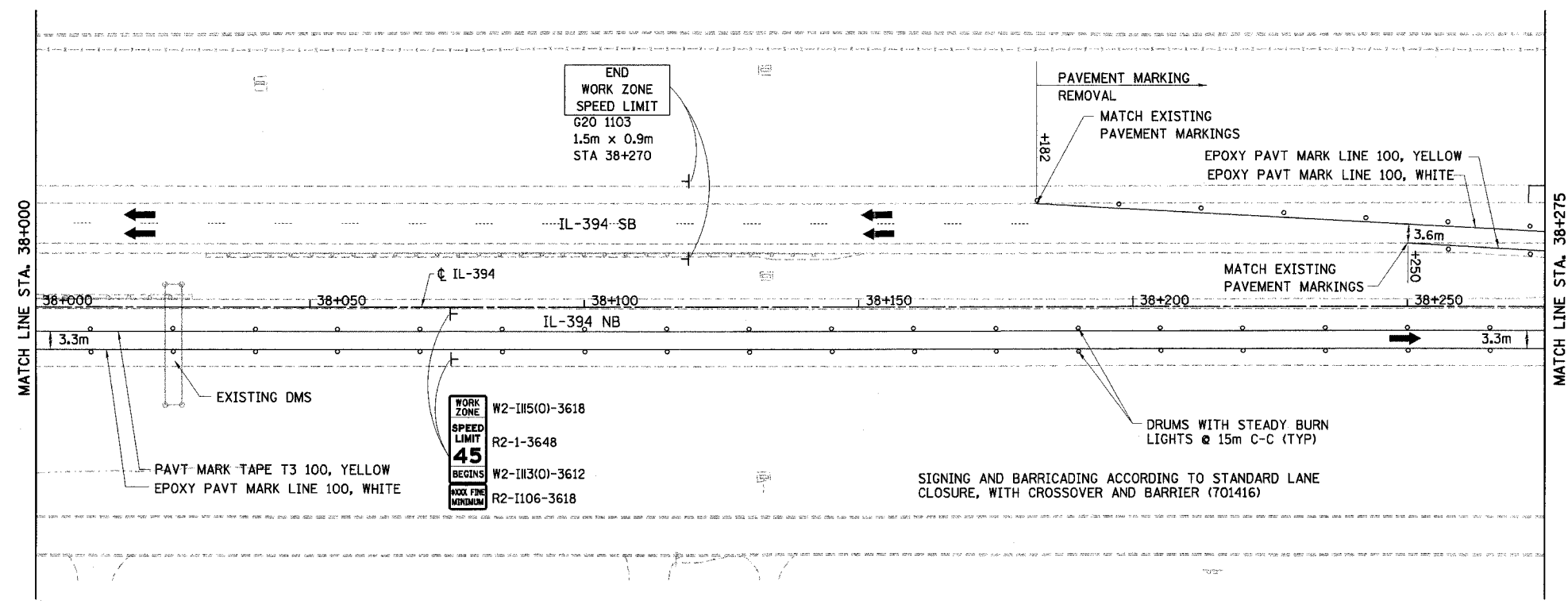


F.A.I. RTE	SECTION	COUNTY	TOTAL SHEETS	SHEET NO.
80/94		COOK	870	82
STA. 38+000		TO STA. 38+550		
FED ROAD DIST. NO.		ILLINOIS FED. AID PROJECT		



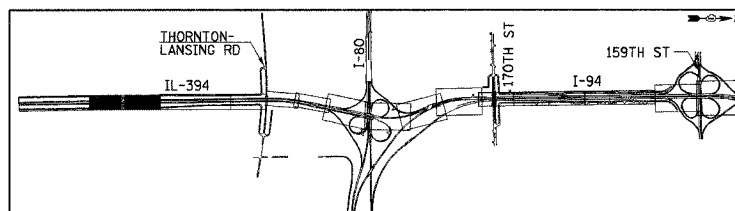
NOTE:
 AVAILABLE EXISTING TEMPORARY CONCRETE BARRIER SHALL BE USED FOR THE STAGE CONFIGURATION SHOWN AND PAID FOR AS RELOCATE TEMPORARY CONCRETE BARRIER (SPECIAL) (M704002). WHERE THERE IS A SHORTAGE, TEMPORARY CONCRETE BARRIER (M7040100) SHALL BE USED (SEE DWG. MT-2 FOR TEMPORARY CONCRETE BARRIER SCHEDULE)

GLARE SCREEN SHALL BE PAID SEPARATELY AS MODULAR GLARE SCREEN SYSTEM.

MONO-DIRECTIONAL PRISMATIC REFLECTORS SHALL BE PLACED ON EACH SIDE OF WALL AS SHOWN IN MAINTENANCE OF TRAFFIC TYPICAL SECTIONS.

LEGEND

	WORK ZONE		DRUMS WITH STEADY BURN LIGHTS
	TEMPORARY PAVEMENT		VERTICAL PANELS
	TRAFFIC DIRECTION		TYPE III BARRICADE WITH 2 FLASHING LIGHTS
	LANE CLOSURE		



REVISIONS	
NAME	DATE

MT-8
 ILLINOIS DEPARTMENT OF TRANSPORTATION
 I-94 EAST BOUND / IL 394 SOUTH BOUND

MAINTENANCE OF TRAFFIC
 IL-394 - STAGE 1
 STA. 38+000 TO STA. 38+550

HORIZ SCALE: 1:500
 VERT SCALE: NONE
 DATE: JULY 18, 2005

DRAWN BY: STS
 CHECKED BY: JES

HNTB