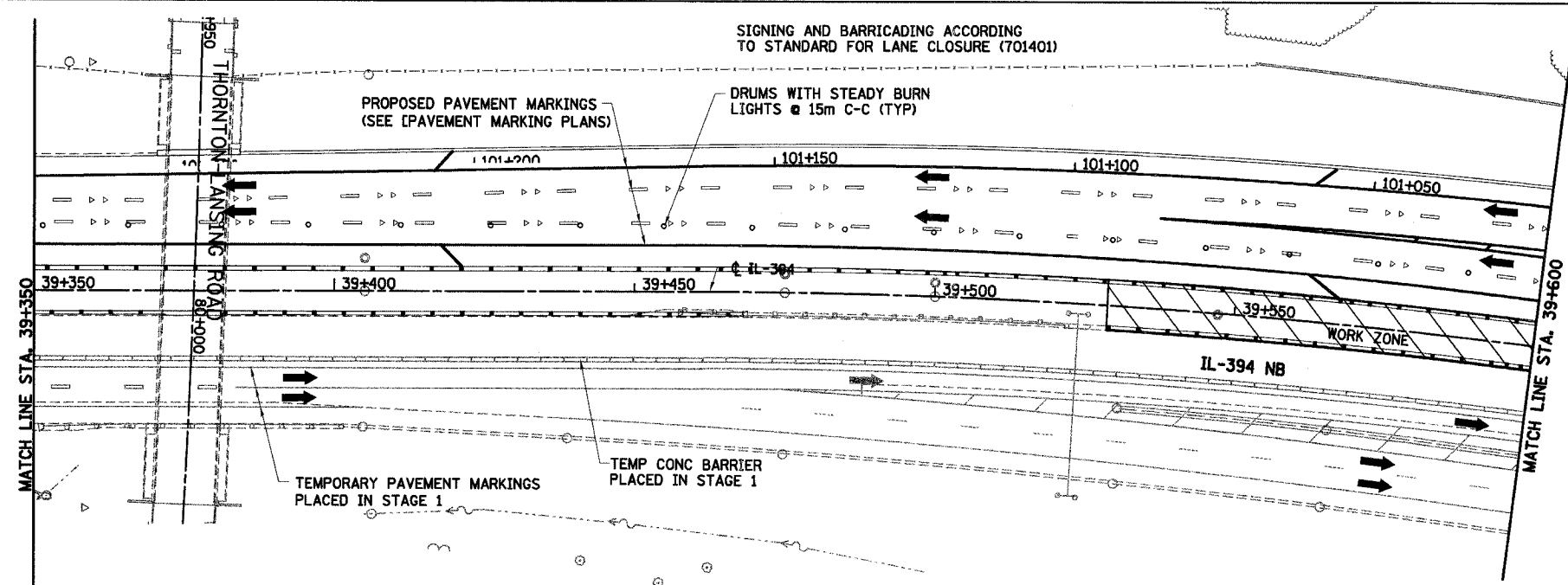
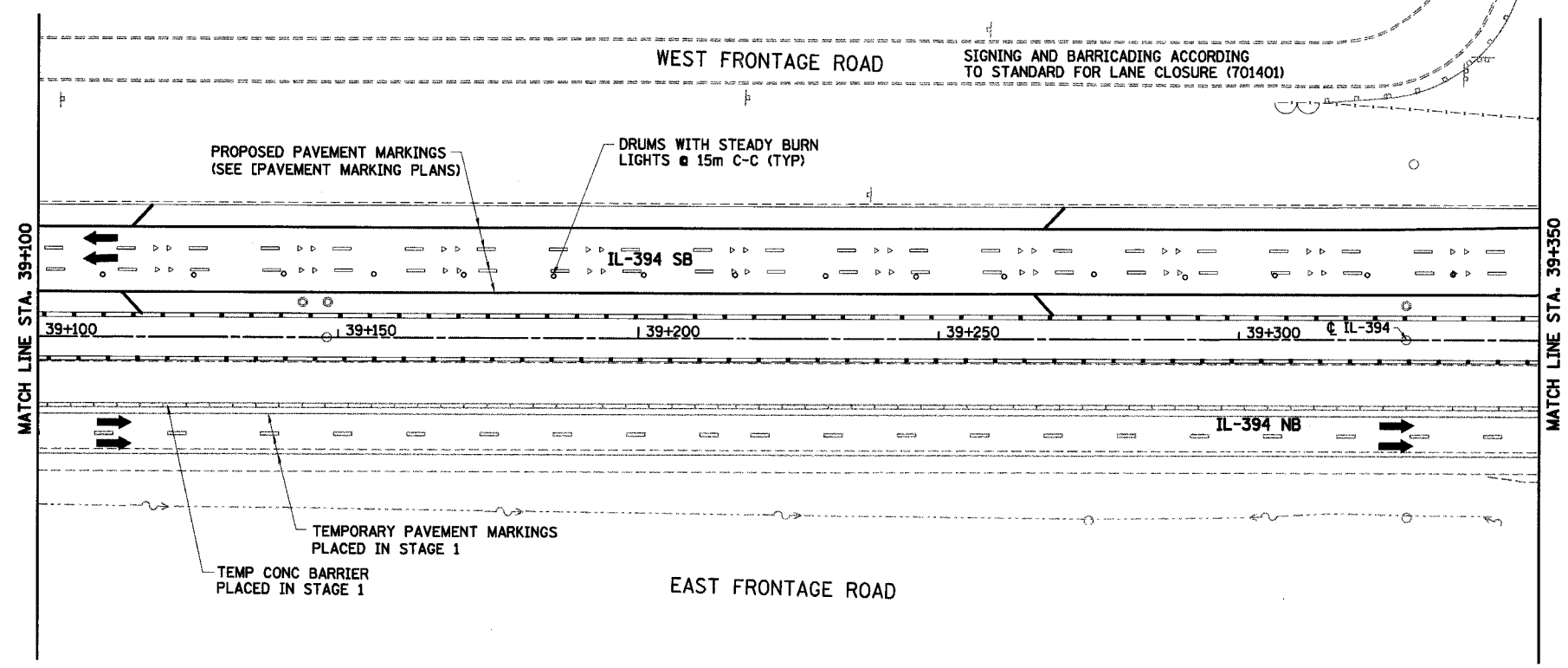
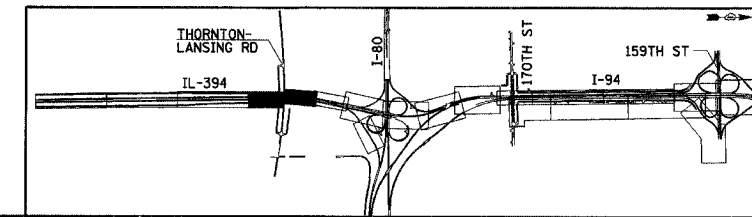


F.A.I. RTE	SECTION	COUNTY	TOTAL SHEETS	SHEET NO.
80/94	*	COOK	870	107
STA. 39+100		TO STA. 39+600		
FED ROAD DIST. NO.		ILLINOIS FED. AID PROJECT		



LEGEND

- WORK ZONE
- TEMPORARY PAVEMENT
- TRAFFIC DIRECTION
- LANE CLOSURE
- DRUMS WITH STEADY BURN LIGHTS
- VERTICAL PANELS
- TYPE III BARRICADE WITH 2 FLASHING LIGHTS



REVISIONS	
NAME	DATE

MT-33

ILLINOIS DEPARTMENT OF TRANSPORTATION
I-94 EAST BOUND / IL 394 SOUTH BOUND

**MAINTENANCE OF TRAFFIC
IL-394 - STAGE 3
STA. 39+100 TO STA. 39+600**

HORIZ SCALE: 1:500
VERT SCALE: NONE
DATE: JULY 18, 2005

DRAWN BY: STS
CHECKED BY: JES

HNTB