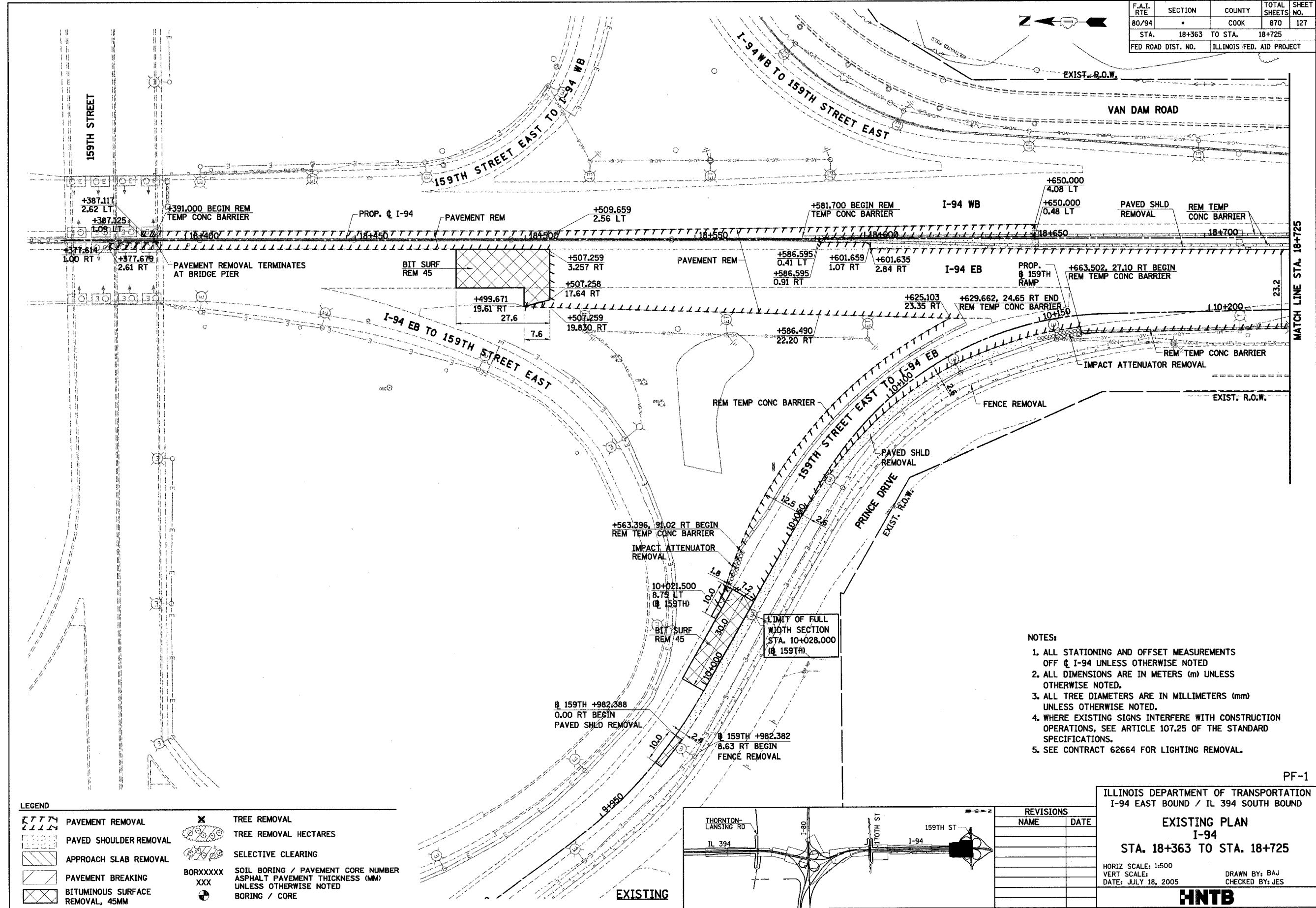


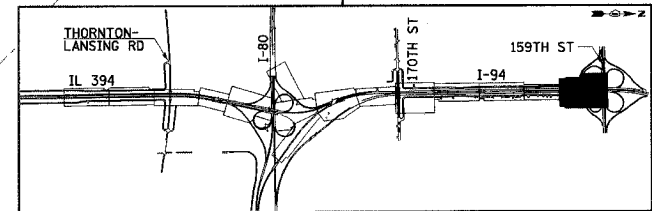
F.A.I. RTE	SECTION	COUNTY	TOTAL SHEETS	SHEET NO.
80/94		COOK	870	127
STA.	18+363	TO STA.	18+725	
FED ROAD DIST. NO.	ILLINOIS FED. AID PROJECT			



- NOTES:
1. ALL STATIONING AND OFFSET MEASUREMENTS OFF ϕ I-94 UNLESS OTHERWISE NOTED
 2. ALL DIMENSIONS ARE IN METERS (m) UNLESS OTHERWISE NOTED.
 3. ALL TREE DIAMETERS ARE IN MILLIMETERS (mm) UNLESS OTHERWISE NOTED.
 4. WHERE EXISTING SIGNS INTERFERE WITH CONSTRUCTION OPERATIONS, SEE ARTICLE 107.25 OF THE STANDARD SPECIFICATIONS.
 5. SEE CONTRACT 62664 FOR LIGHTING REMOVAL.

LEGEND

	PAVEMENT REMOVAL		TREE REMOVAL
	PAVED SHOULDER REMOVAL		TREE REMOVAL HECTARES
	APPROACH SLAB REMOVAL		SELECTIVE CLEARING
	PAVEMENT BREAKING	BORXXXXX	SOIL BORING / PAVEMENT CORE NUMBER
	BITUMINOUS SURFACE REMOVAL, 45MM	XXX	ASPHALT PAVEMENT THICKNESS (MM) UNLESS OTHERWISE NOTED
			BORING / CORE



REVISIONS	
NAME	DATE

ILLINOIS DEPARTMENT OF TRANSPORTATION
I-94 EAST BOUND / IL 394 SOUTH BOUND

EXISTING PLAN
I-94
STA. 18+363 TO STA. 18+725

HORIZ SCALE: 1:500
VERT SCALE: 1:500
DATE: JULY 18, 2005

DRAWN BY: BAJ
CHECKED BY: JES

HNTB