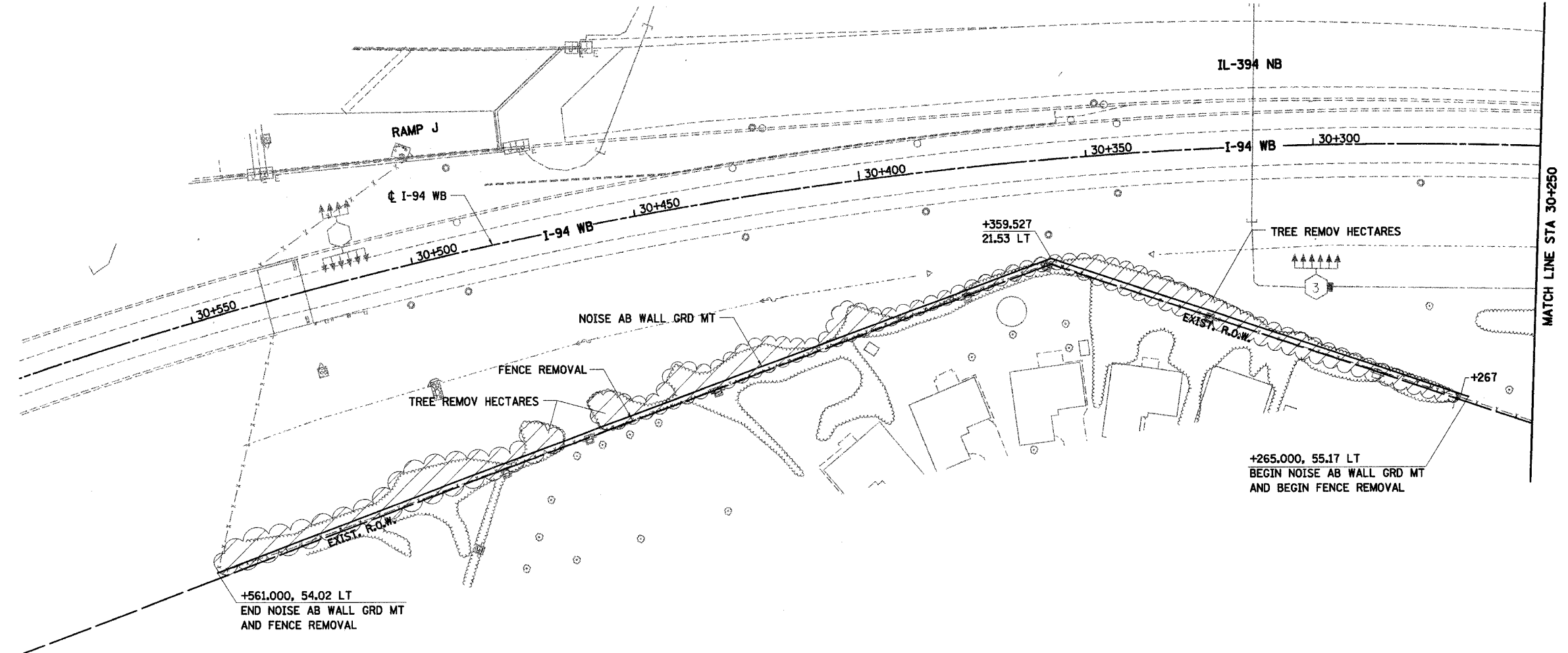


F.A.I. RTE	SECTION	COUNTY	TOTAL SHEETS	SHEET NO.
80/94	•	COOK	870	153
STA.	TO STA.			
FED ROAD DIST. NO.	ILLINOIS	FED. AID PROJECT		

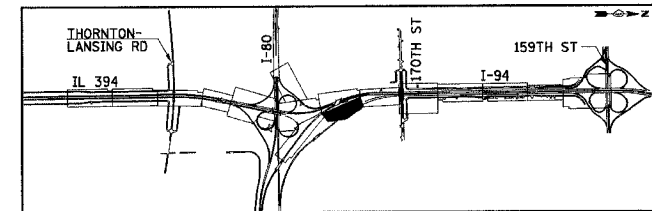
LEGEND

	PAVEMENT REMOVAL		TREE REMOVAL
	PAVED SHOULDER REMOVAL		TREE REMOVAL HECTARES
	APPROACH SLAB REMOVAL		SELECTIVE CLEARING
	PAVEMENT BREAKING	BORXXXXX	SOIL BORING / PAVEMENT CORE NUMBER
	BITUMINOUS SURFACE REMOVAL, 45MM	XXX	ASPHALT PAVEMENT THICKNESS (MM) UNLESS OTHERWISE NOTED
			BORING / CORE



NOTES:

1. ALL STATIONING AND OFFSET MEASUREMENTS OFF ϕ I-94 WB UNLESS OTHERWISE NOTED
2. ALL DIMENSIONS ARE IN METERS (m) UNLESS OTHERWISE NOTED.
3. ALL TREE DIAMETERS ARE IN MILLIMETERS (mm) UNLESS OTHERWISE NOTED.
4. WHERE EXISTING SIGNS INTERFERE WITH CONSTRUCTION OPERATIONS, SEE ARTICLE 107.25 OF THE STANDARD SPECIFICATIONS.
5. SEE CONTRACT 62664 FOR LIGHTING REMOVAL.



REVISIONS	
NAME	DATE

ILLINOIS DEPARTMENT OF TRANSPORTATION
 I-94 EAST BOUND / IL 394 SOUTH BOUND
EXISTING AND PROPOSED PLAN
I-94 WB
STA. 30+250 TO STA. 30+550

HORIZ SCALE: 1:500
 VERT SCALE:
 DATE: JULY 18, 2005

DRAWN BY: BJM
 CHECKED BY: JES

HNTB