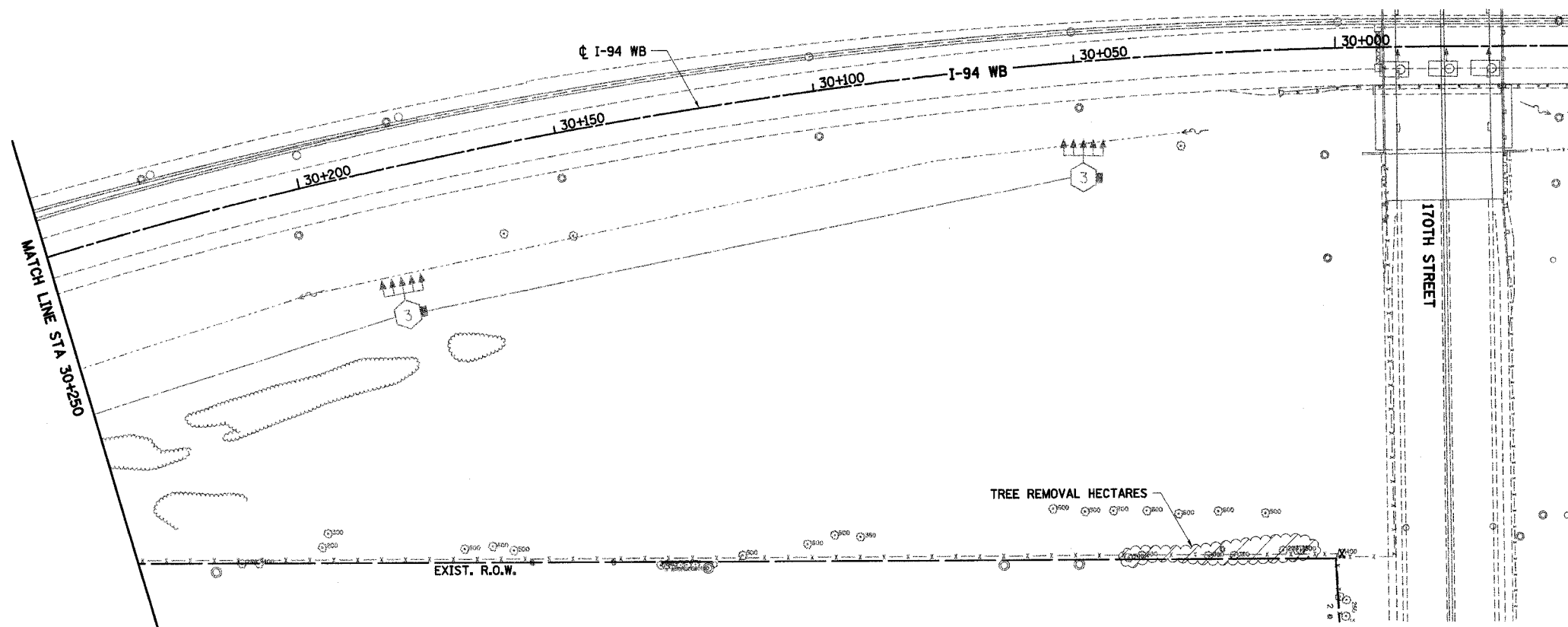


F.A.I. RTE	SECTION	COUNTY	TOTAL SHEETS	SHEET NO.
80/94	•	COOK	870	154
STA.		TO STA.		
FED ROAD DIST. NO.		ILLINOIS	FED. AID PROJECT	

**LEGEND**

	PAVEMENT REMOVAL		TREE REMOVAL
	PAVED SHOULDER REMOVAL		TREE REMOVAL HECTARES
	APPROACH SLAB REMOVAL		SELECTIVE CLEARING
	PAVEMENT BREAKING	BORXXXX	SOIL BORING / PAVEMENT CORE NUMBER
	BITUMINOUS SURFACE REMOVAL, 45MM	XXX	ASPHALT PAVEMENT THICKNESS (MM) UNLESS OTHERWISE NOTED
			BORING / CORE



**NOTES:**

1. ALL STATIONING AND OFFSET MEASUREMENTS OFF  $\phi$  I-94 WB UNLESS OTHERWISE NOTED
2. ALL DIMENSIONS ARE IN METERS (m) UNLESS OTHERWISE NOTED.
3. ALL TREE DIAMETERS ARE IN MILLIMETERS (mm) UNLESS OTHERWISE NOTED.
4. WHERE EXISTING SIGNS INTERFERE WITH CONSTRUCTION OPERATIONS, SEE ARTICLE 107.25 OF THE STANDARD SPECIFICATIONS.
5. SEE CONTRACT 62664 FOR LIGHTING REMOVAL.

PF-28

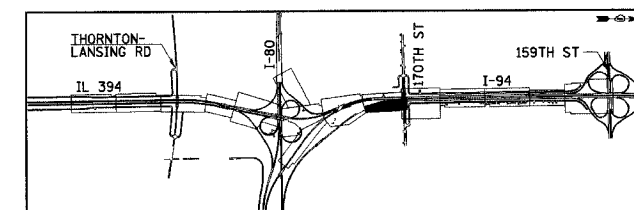
ILLINOIS DEPARTMENT OF TRANSPORTATION  
I-94 EAST BOUND / IL 394 SOUTH BOUND

**EXISTING AND PROPOSED PLAN**  
I-94 WB  
STA. 30+000 TO STA. 30+250

HORIZ SCALE: 1:500  
VERT SCALE:  
DATE: JULY 18, 2005

DRAWN BY: BJM  
CHECKED BY: JES

**HNTB**



REVISIONS	
NAME	DATE