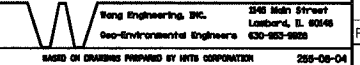
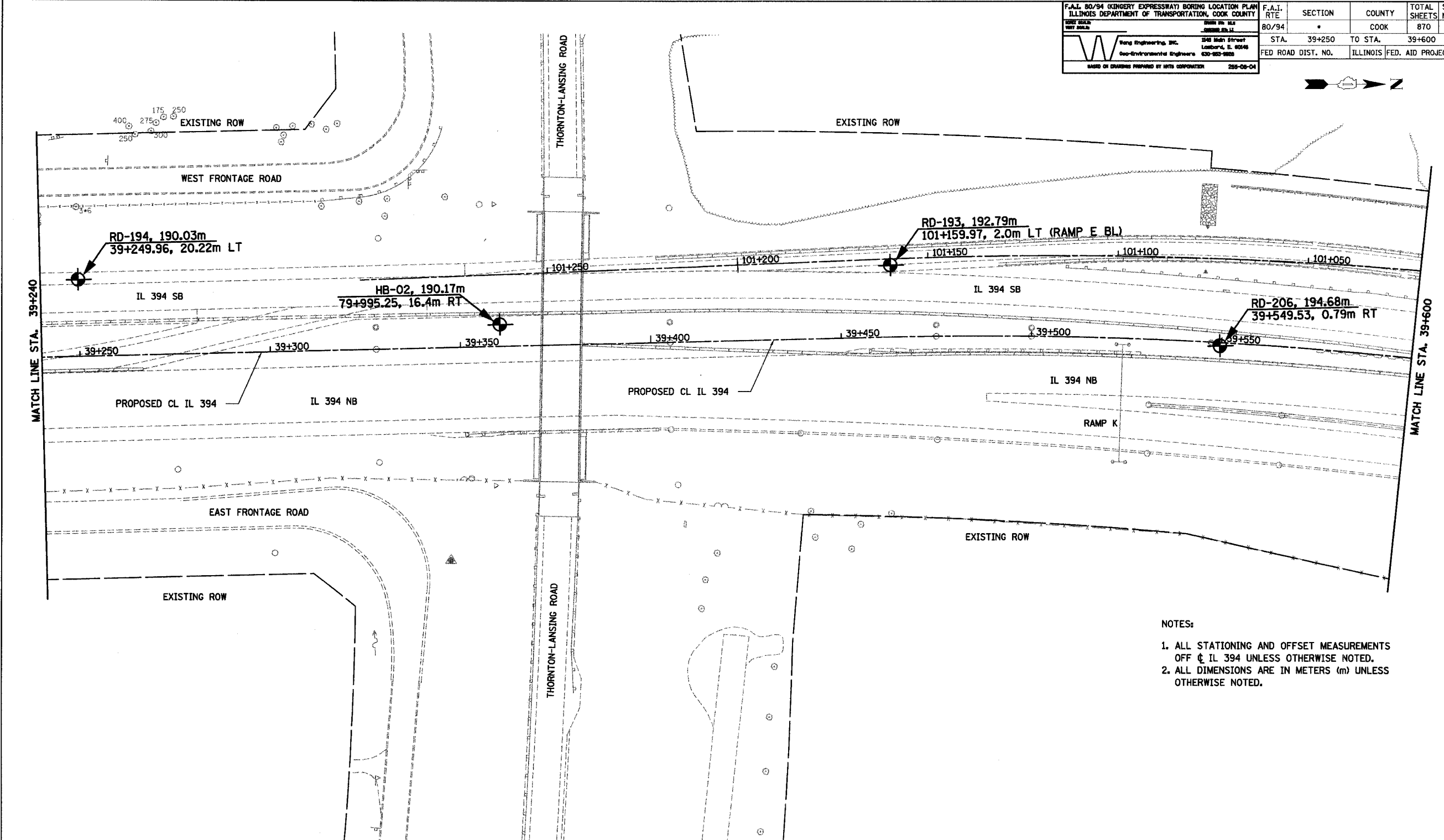


F.A.I. 80/94 (KINGERY EXPRESSWAY) BORING LOCATION PLAN ILLINOIS DEPARTMENT OF TRANSPORTATION, COOK COUNTY		F.A.I. RTE	SECTION	COUNTY	TOTAL SHEETS	SHEET NO.
		80/94	*	COOK	870	183
STATIONING: STA. 39+250 TO STA. 39+600		FED ROAD DIST. NO. ILLINOIS FED. AID PROJECT				



- NOTES:
1. ALL STATIONING AND OFFSET MEASUREMENTS OFF ϕ IL 394 UNLESS OTHERWISE NOTED.
 2. ALL DIMENSIONS ARE IN METERS (m) UNLESS OTHERWISE NOTED.

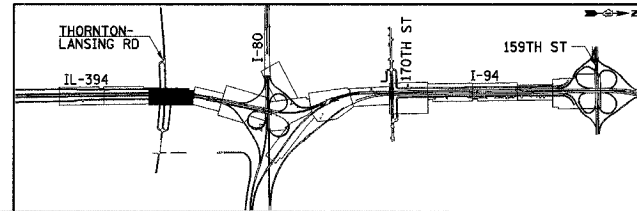
SB-11

ILLINOIS DEPARTMENT OF TRANSPORTATION
I-94 EAST BOUND / IL 394 SOUTH BOUND

SOIL BORING PLAN
IL 394
STA. 39+240 TO STA. 39+600

HORIZ SCALE: 1:500
VERT SCALE:
DATE: JULY 18, 2005
DRAWN BY:
CHECKED BY:

REVISIONS	
NAME	DATE



EXISTING