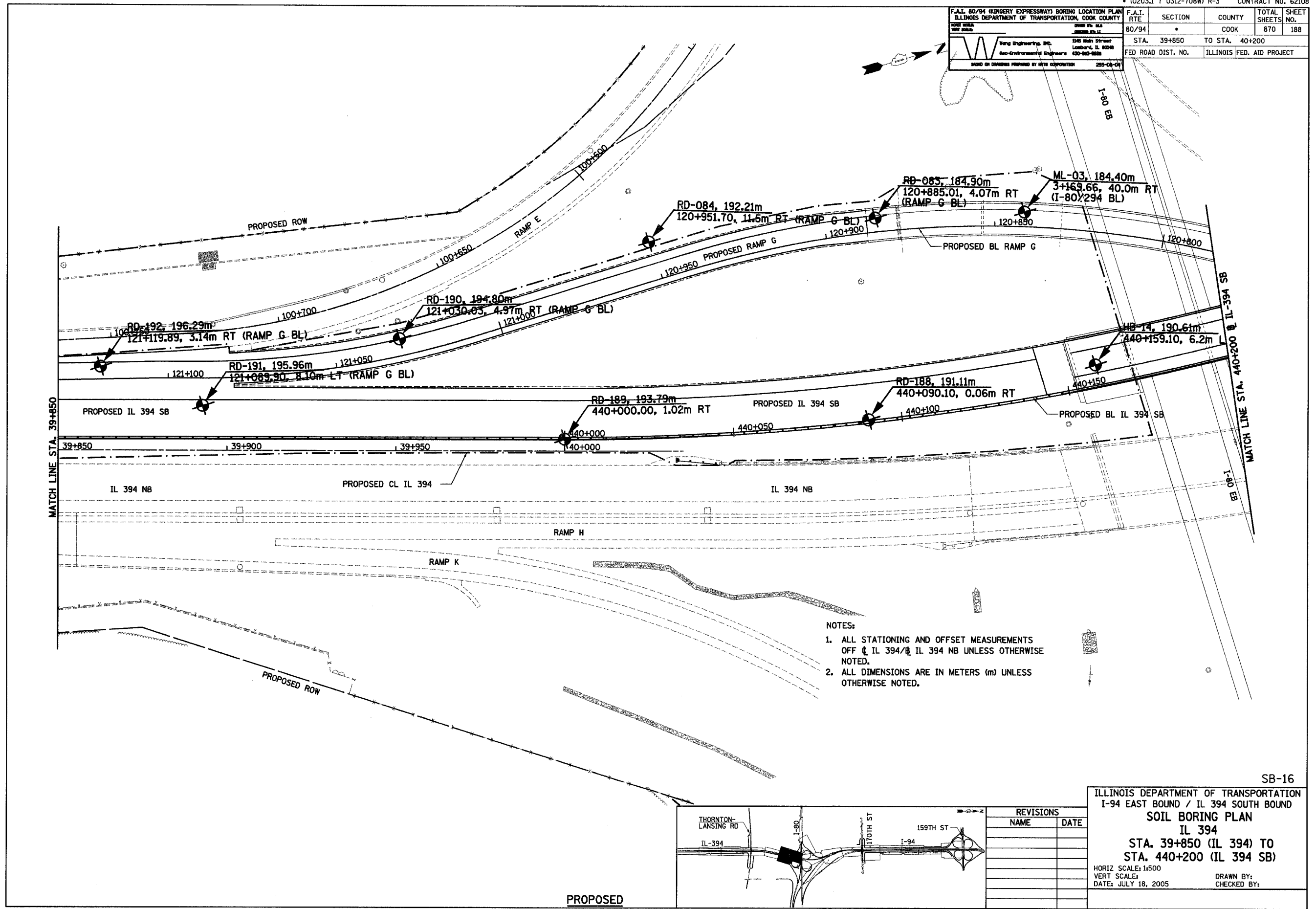
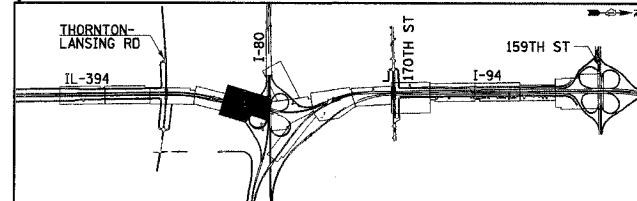


F.A.I. 80/94 (KINGERY EXPRESSWAY) BORING LOCATION PLAN ILLINOIS DEPARTMENT OF TRANSPORTATION, COOK COUNTY		F.A.I. RTE	SECTION	COUNTY	TOTAL SHEETS	SHEET NO.
DATE: 07/11/05 BY: [Signature]		80/94	*	COOK	870	188
STA. 39+850 TO STA. 40+200		FED ROAD DIST. NO.		ILLINOIS FED. AID PROJECT		



- NOTES:
1. ALL STATIONING AND OFFSET MEASUREMENTS OFF CL IL 394/IL 394 NB UNLESS OTHERWISE NOTED.
 2. ALL DIMENSIONS ARE IN METERS (m) UNLESS OTHERWISE NOTED.



REVISIONS	
NAME	DATE

ILLINOIS DEPARTMENT OF TRANSPORTATION
I-94 EAST BOUND / IL 394 SOUTH BOUND
SOIL BORING PLAN
IL 394
STA. 39+850 (IL 394) TO
STA. 440+200 (IL 394 SB)

HORIZ SCALE: 1:500
VERT SCALE: 1:500
DATE: JULY 18, 2005

DRAWN BY: [Signature]
CHECKED BY: [Signature]

PROPOSED