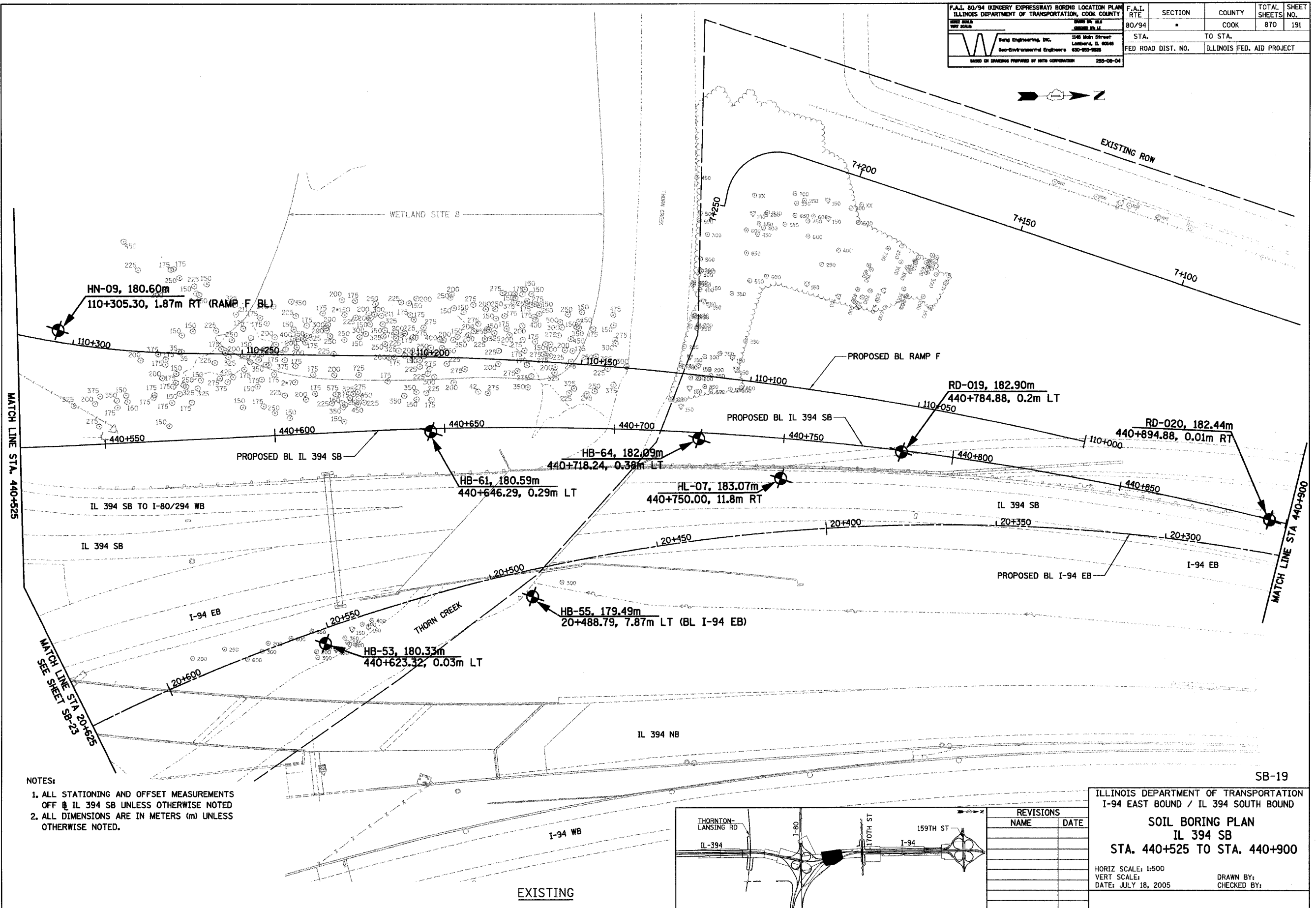
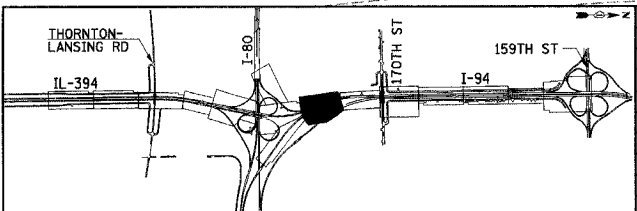


F.A.I. 80/94 (KINGERY EXPRESSWAY) BORING LOCATION PLAN ILLINOIS DEPARTMENT OF TRANSPORTATION, COOK COUNTY		F.A.I. RTE	SECTION	COUNTY	TOTAL SHEETS	SHEET NO.
DATE: 07/18/05 BY: WANG		80/94	*	COOK	870	191
Wang Engineering, Inc. Geo-Environmental Engineers 1548 16th Street Lombard, IL 60148 630-953-9828		STA.	TO STA.		FED. ROAD DIST. NO. ILLINOIS FED. AID PROJECT	
BASED ON DRAWING PREPARED BY WED CORPORATION 255-08-04						



- NOTES:
1. ALL STATIONING AND OFFSET MEASUREMENTS OFF IL 394 SB UNLESS OTHERWISE NOTED
 2. ALL DIMENSIONS ARE IN METERS (m) UNLESS OTHERWISE NOTED.



REVISIONS	
NAME	DATE

ILLINOIS DEPARTMENT OF TRANSPORTATION
I-94 EAST BOUND / IL 394 SOUTH BOUND

SOIL BORING PLAN
IL 394 SB
STA. 440+525 TO STA. 440+900

HORIZ SCALE: 1:500
VERT SCALE: 1:500
DATE: JULY 18, 2005

DRAWN BY:
CHECKED BY: