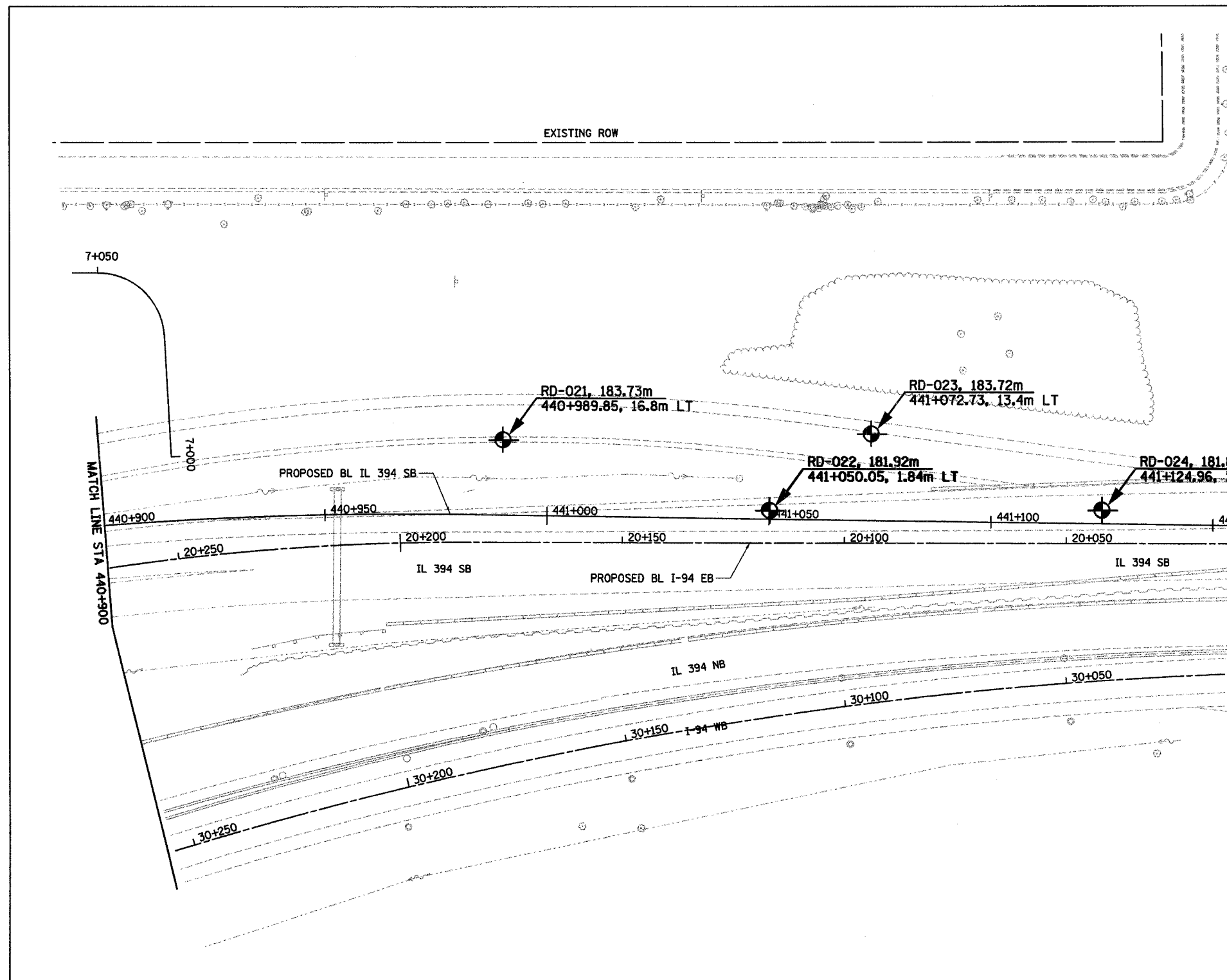
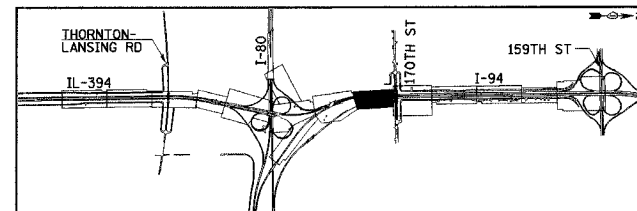


F.A.I. 80/94 (KINGERY EXPRESSWAY) BORING LOCATION PLAN ILLINOIS DEPARTMENT OF TRANSPORTATION, COOK COUNTY		F.A.I. RTE	SECTION	COUNTY	TOTAL SHEETS	SHEET NO.
DRAWN BY: WANG CHECKED BY: WANG		80/94	*	COOK	870	193
Wang Engineering, Inc. Geo-Environmental Engineers 1245 Mich Street Lombard, IL 60148 630-953-2828		STA.	TO STA.			
BASED ON DRAWINGS PREPARED BY ARS CORPORATION 255-08-04		FED ROAD DIST. NO.		ILLINOIS	FED. AID PROJECT	



- NOTES:
1. ALL STATIONING AND OFFSET MEASUREMENTS OFF @ IL 394 SB UNLESS OTHERWISE NOTED
 2. ALL DIMENSIONS ARE IN METERS (m) UNLESS OTHERWISE NOTED.

EXISTING



REVISIONS	
NAME	DATE

ILLINOIS DEPARTMENT OF TRANSPORTATION
I-94 EAST BOUND / IL 394 SOUTH BOUND

SOIL BORING PLAN
IL 394 SB
STA. 440+900 TO STA. 441+167.161

HORIZ SCALE: 1:500
VERT SCALE: 1:500
DATE: JULY 18, 2005

DRAWN BY:
CHECKED BY:

SB-21