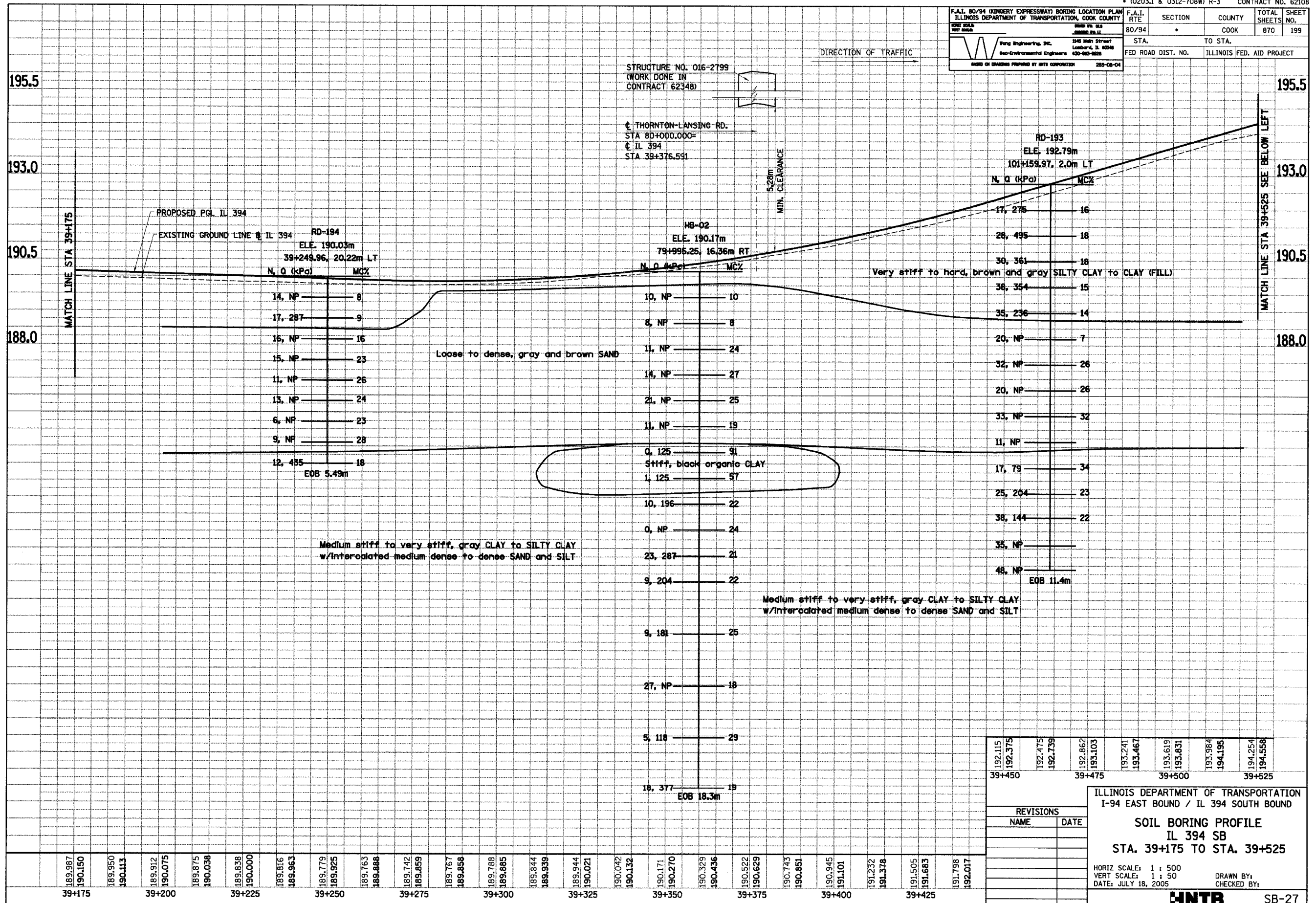


F.A.I. 80/94 (KINGERY EXPRESSWAY) BORING LOCATION PLAN ILLINOIS DEPARTMENT OF TRANSPORTATION, COOK COUNTY	F.A.I. RTE. 80/94	SECTION *	COUNTY COOK	TOTAL SHEETS 870	SHEET NO. 199
Wang Engineers, Inc. 3145 Main Street, Lombard, IL 60148 630-953-8228		STA. TO STA. FED ROAD DIST. NO. ILLINOIS FED. AID PROJECT			
BASED ON DRAWING PROVIDED BY IHTS CORPORATION 252-08-04					



192.115	192.375	192.475	192.739	192.862	193.103	193.241	193.467	193.619	193.831	193.984	194.195	194.254	194.558
39+450		39+475		39+500		39+525							

ILLINOIS DEPARTMENT OF TRANSPORTATION  
I-94 EAST BOUND / IL 394 SOUTH BOUND

**SOIL BORING PROFILE**  
IL 394 SB  
STA. 39+175 TO STA. 39+525

HORIZ SCALE: 1 : 500  
VERT SCALE: 1 : 50  
DATE: JULY 18, 2005

DRAWN BY:  
CHECKED BY:

**HNTB** SB-27