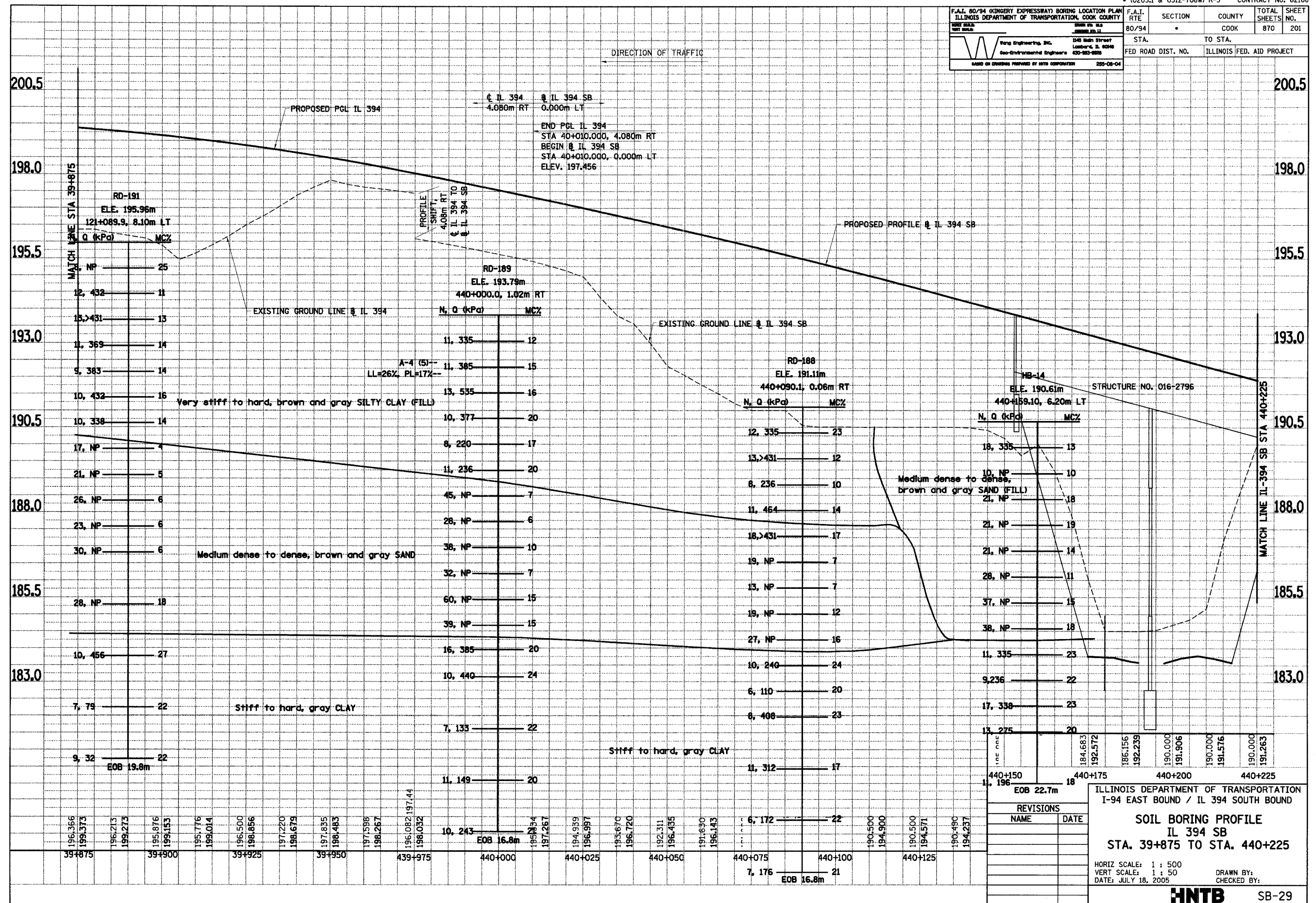


F.A.I. 80/94 (KINGERY EXPRESSWAY) BORING LOCATION PLAN ILLINOIS DEPARTMENT OF TRANSPORTATION, COOK COUNTY		F.A.I. RTE	SECTION	COUNTY	TOTAL SHEETS	SHEET NO.
80/94		80/94		COOK	870	201
FED ROAD DIST. NO.		TO STA.		ILLINOIS FED. AID PROJECT		
255-08-04		440+000.0				



REVISIONS	
NAME	DATE

ILLINOIS DEPARTMENT OF TRANSPORTATION
 I-94 EAST BOUND / IL 394 SOUTH BOUND

SOIL BORING PROFILE
 IL 394 SB
 STA. 39+875 TO STA. 440+225

HORIZ SCALE: 1 : 500
 VERT SCALE: 1 : 50
 DATE: JULY 18, 2005

DRAWN BY: _____
 CHECKED BY: _____

HNTB SB-29