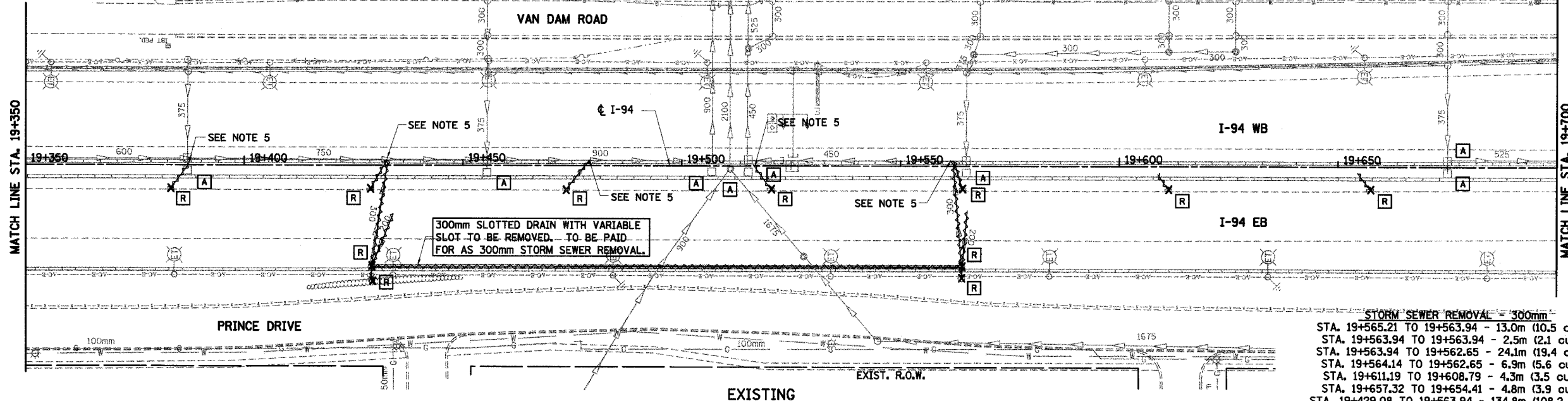


**LEGEND - EXISTING**

- EXISTING INLET
- EXISTING CATCH BASIN
- EXISTING MANHOLE
- EXISTING MEDIAN DRAINAGE STRUCTURE
- ⊗ EXISTING DRAINAGE STRUCTURE REMOVAL
- ▭ EXISTING DRAINAGE STRUCTURE ADJUSTMENT
- ~ EXISTING DITCH
- REC EXISTING DRAINAGE STRUCTURE RECONSTRUCTED
- A EXISTING FRAMES AND GRATES ADJUSTMENT
- C EXISTING DRAINAGE STRUCTURES TO BE CLEANED
- ← EXISTING STORM SEWER TO BE REMOVED
- EXISTING STORM SEWER
- ▬ EXISTING SLOTTED DRAIN
- ▬ EXISTING PIPE UNDERDRAIN

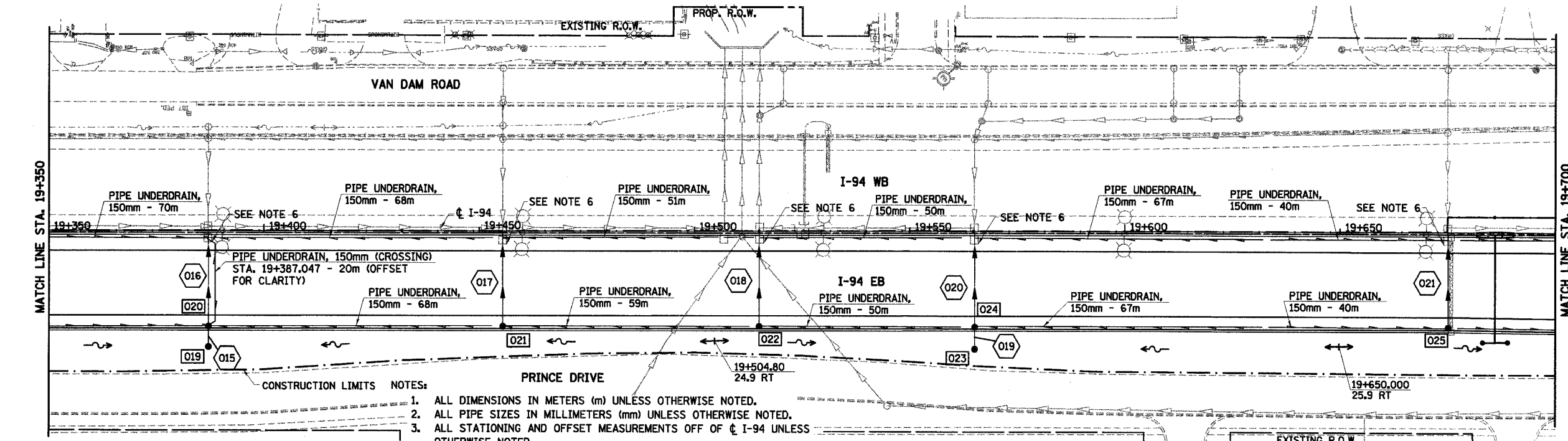
REMOVING INLETS	REMOVING INLETS	REMOVING CATCH BASINS	STORM SEWER REMOVAL - 300mm
19+383.1, 5.3 RT	19+564.1, 5.4 RT	19+429.1, 23.1 RT	STA. 19+383.08 TO 19+387.22 - 6.8m (5.5 cu m)
19+428.7, 5.5 RT	19+611.2, 5.3 RT	19+429.1, 26.1 RT	STA. 19+434.02 TO 19+429.08 - 12.9m (10.4 cu m)
19+473.6, 5.4 RT	19+657.3, 5.2 RT	19+563.9, 23.0 RT	STA. 19+429.07 TO 19+429.08 - 3.1m (2.5 cu m)
19+520.2, 5.3 RT		19+563.9, 25.5 RT	STA. 19+429.08 TO 19+432.29 - 24.0m (19.3 cu m)
			STA. 19+428.75 TO 19+432.29 - 7.4m (6.0 cu m)
			STA. 19+473.59 TO 19+477.90 - 8.4m (6.8 cu m)
			STA. 19+520.29 TO 19+516.64 - 6.3m (5.1 cu m)

F.A.I. RTE	SECTION	COUNTY	TOTAL SHEETS	SHEET NO.
80/94		COOK	870	216
STA. 19+350 TO STA. 19+700				
FED ROAD DIST. NO.		ILLINOIS	FED. AID PROJECT	



**STORM SEWER REMOVAL - 300mm**

STA. 19+565.21 TO 19+563.94 - 13.0m (10.5 cu m)
STA. 19+563.94 TO 19+563.94 - 2.5m (2.1 cu m)
STA. 19+563.94 TO 19+562.65 - 24.1m (19.4 cu m)
STA. 19+564.14 TO 19+562.65 - 6.9m (5.6 cu m)
STA. 19+611.19 TO 19+608.79 - 4.3m (3.5 cu m)
STA. 19+657.32 TO 19+654.41 - 4.8m (3.9 cu m)
STA. 19+429.08 TO 19+563.94 - 134.8m (108.2 cu m)

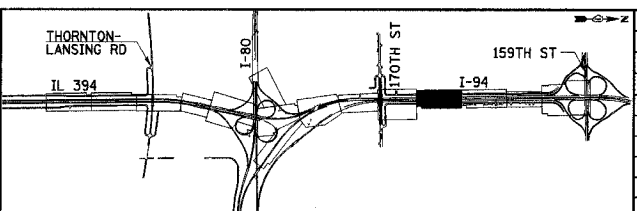


**LEGEND - PROPOSED**

- PROPOSED STORM SEWER
- PROPOSED SUMMIT
- PROPOSED DITCH
- ▬ PROPOSED SLOTTED DRAIN
- PROPOSED SWALE
- PROPOSED INLET
- PROPOSED CATCH BASIN
- PROPOSED MANHOLE
- MEDIAN DRAINAGE STRUCTURE
- ▲ PRECAST REINFORCED CONC. FLARED END SECTION

- CONSTRUCTION LIMITS NOTES:**
- ALL DIMENSIONS IN METERS (m) UNLESS OTHERWISE NOTED.
  - ALL PIPE SIZES IN MILLIMETERS (mm) UNLESS OTHERWISE NOTED.
  - ALL STATIONING AND OFFSET MEASUREMENTS OFF OF  $\phi$  I-94 UNLESS OTHERWISE NOTED.
  - TRENCH BACKFILL FOR STORM SEWER REMOVAL GIVEN AFTER LENGTH OF PIPE REMOVAL. IF EXISTING STORM SEWER IS REMOVED AND REPLACED, TRENCH BACKFILL WILL BE PROVIDED FOR PROPOSED STORM SEWER ONLY.
  - CONTRACTOR TO REMOVE 300mm RISER SECTION FROM PRECAST TEE AND SEAL OPENING AT LOCATIONS WHERE 300mm RCP IS TEMPORARILY CONNECTED TO MAINLINE STORM SEWER. WORK IS INCLUDED IN COST OF STORM SEWER REMOVAL.
  - CONTRACTOR TO REMOVE TEMPORARY BULKHEAD FROM MDS PLACED IN CONTRACT 62107 AND CONNECT PROPOSED STORM SEWER TO EXISTING INVERT. WORK INCLUDED IN COST OF PROPOSED STORM SEWER.

**PROPOSED**



REVISIONS	
NAME	DATE

ILLINOIS DEPARTMENT OF TRANSPORTATION  
 I-94 EAST BOUND / IL 394 SOUTH BOUND  
**DRAINAGE AND UTILITIES**  
 I-94  
 STA. 19+350 TO STA. 19+700

HORIZ SCALE: 1:500  
 VERT SCALE:  
 DATE: JULY 18, 2005

DRAWN BY: JPH  
 CHECKED BY: MAM

**HNTB**