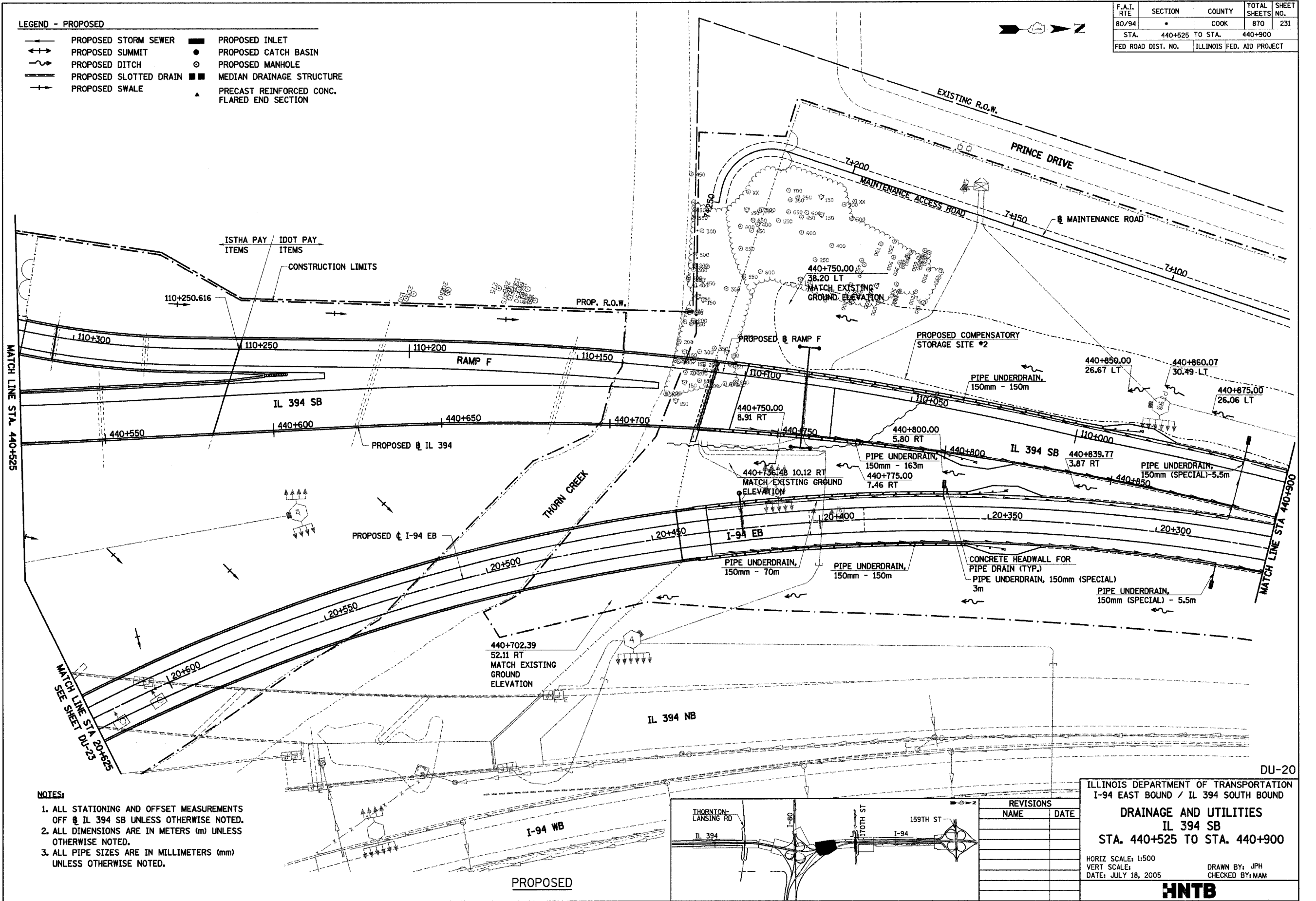


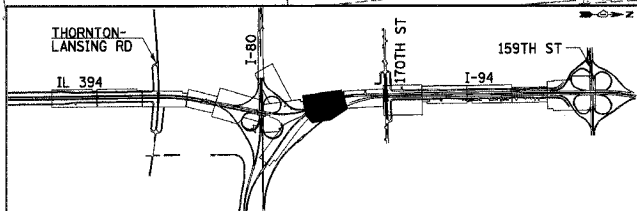
F.A.I. RTE	SECTION	COUNTY	TOTAL SHEETS	SHEET NO.
80/94	*	COOK	870	231
STA.	440+525 TO STA. 440+900			
FED ROAD DIST. NO.	ILLINOIS FED. AID PROJECT			

LEGEND - PROPOSED

- | | | | |
|--|------------------------|--|---|
| | PROPOSED STORM SEWER | | PROPOSED INLET |
| | PROPOSED SUMMIT | | PROPOSED CATCH BASIN |
| | PROPOSED DITCH | | PROPOSED MANHOLE |
| | PROPOSED SLOTTED DRAIN | | MEDIAN DRAINAGE STRUCTURE |
| | PROPOSED SWALE | | PRECAST REINFORCED CONC. FLARED END SECTION |



- NOTES:**
1. ALL STATIONING AND OFFSET MEASUREMENTS OFF @ IL 394 SB UNLESS OTHERWISE NOTED.
 2. ALL DIMENSIONS ARE IN METERS (m) UNLESS OTHERWISE NOTED.
 3. ALL PIPE SIZES ARE IN MILLIMETERS (mm) UNLESS OTHERWISE NOTED.



REVISIONS	
NAME	DATE

ILLINOIS DEPARTMENT OF TRANSPORTATION
 I-94 EAST BOUND / IL 394 SOUTH BOUND
DRAINAGE AND UTILITIES
IL 394 SB
STA. 440+525 TO STA. 440+900

HORIZ SCALE: 1:500
 VERT SCALE:
 DATE: JULY 18, 2005

DRAWN BY: JPH
 CHECKED BY: MAM

HNTB