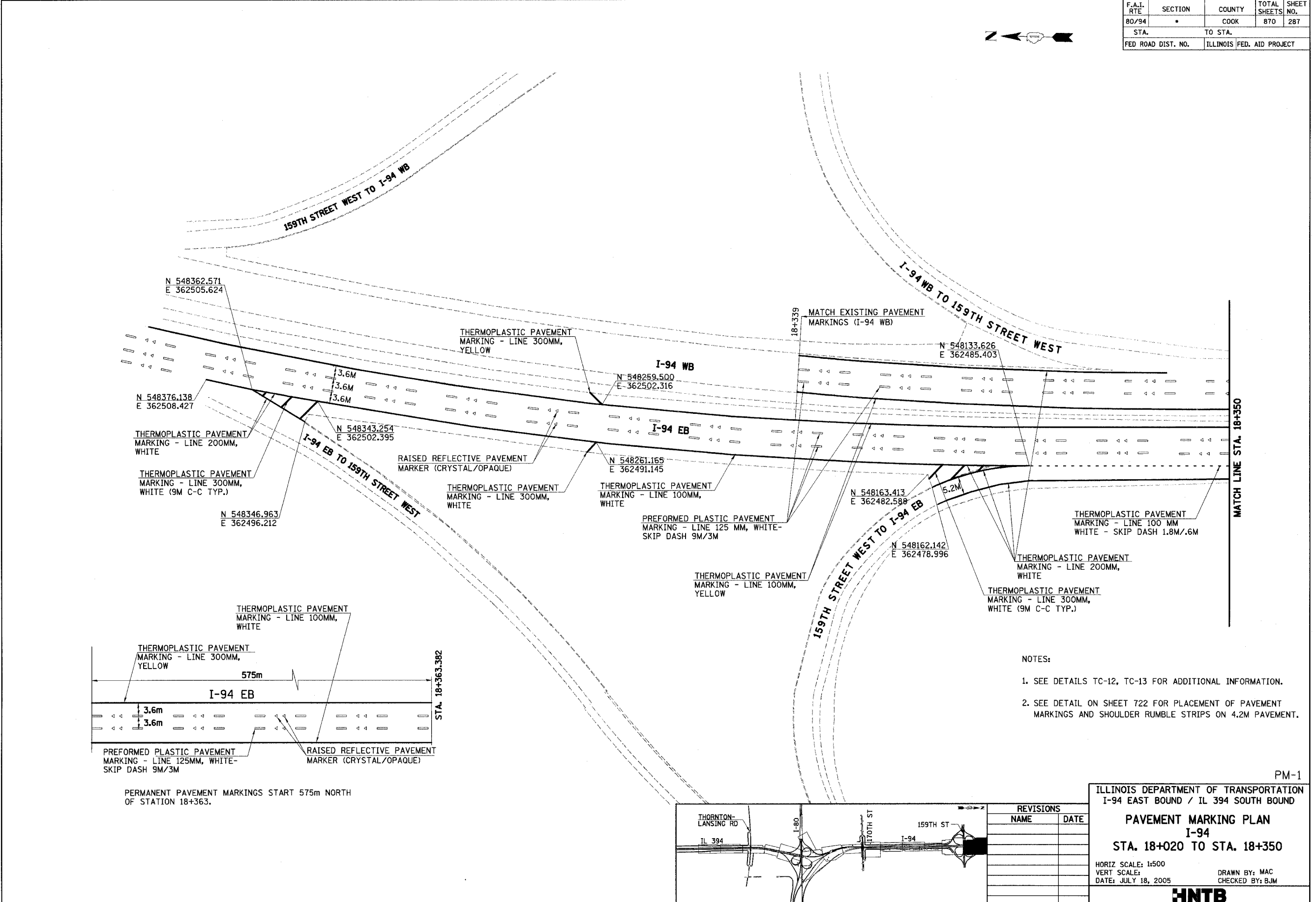


F.A.I. RTE	SECTION	COUNTY	TOTAL SHEETS	SHEET NO.
80/94	*	COOK	870	287
STA.		TO STA.		
FED ROAD DIST. NO.	ILLINOIS	FED. AID PROJECT		



- NOTES:
1. SEE DETAILS TC-12, TC-13 FOR ADDITIONAL INFORMATION.
 2. SEE DETAIL ON SHEET 722 FOR PLACEMENT OF PAVEMENT MARKINGS AND SHOULDER RUMBLE STRIPS ON 4.2M PAVEMENT.

PM-1

ILLINOIS DEPARTMENT OF TRANSPORTATION
I-94 EAST BOUND / IL 394 SOUTH BOUND

PAVEMENT MARKING PLAN
I-94
STA. 18+020 TO STA. 18+350

HORIZ SCALE: 1:500
VERT SCALE:
DATE: JULY 18, 2005

DRAWN BY: MAC
CHECKED BY: BJM



REVISIONS	
NAME	DATE

